

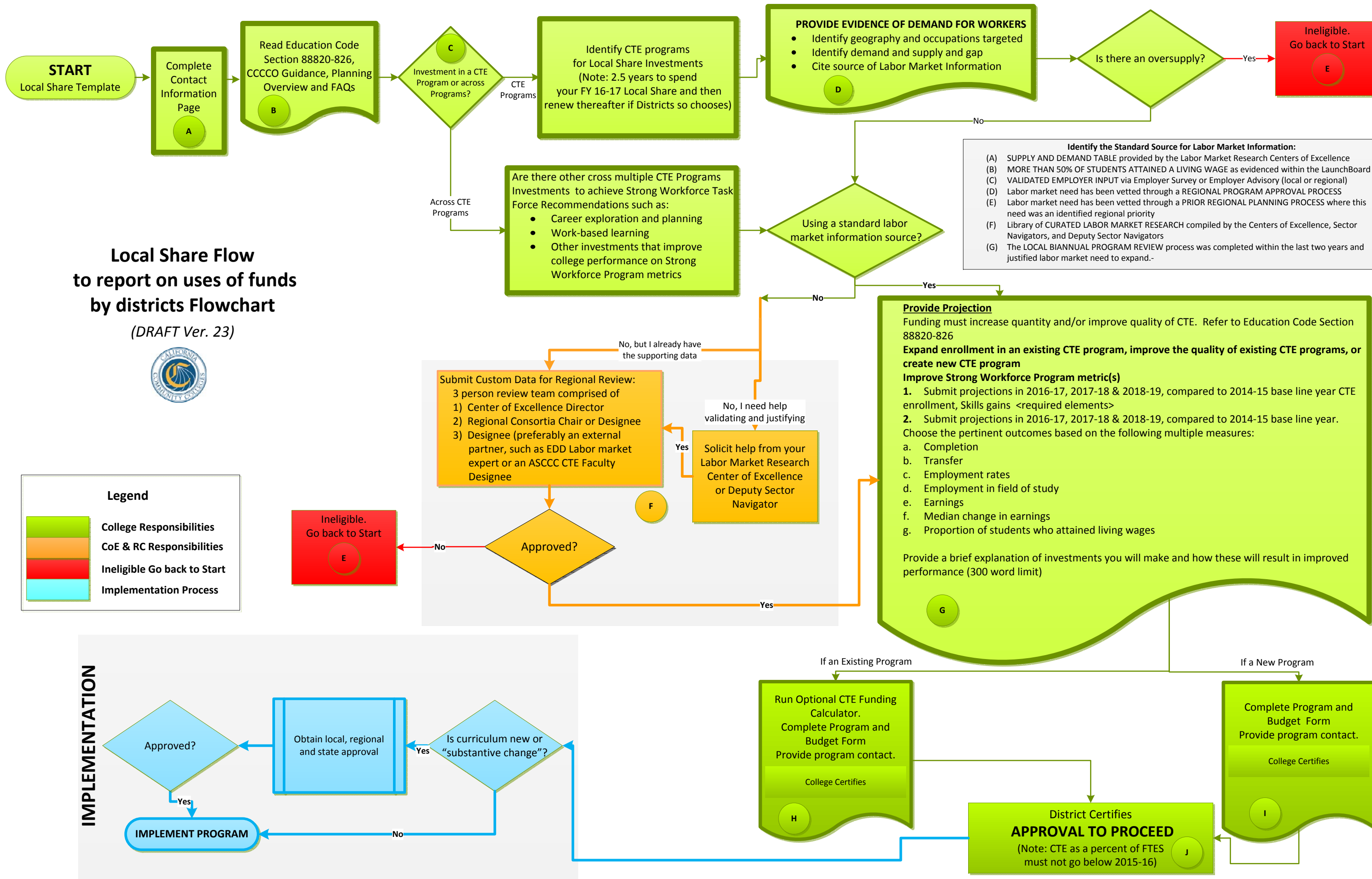
# Local Share Flow to report on uses of funds by districts Flowchart

(DRAFT Ver. 23)



**Legend**

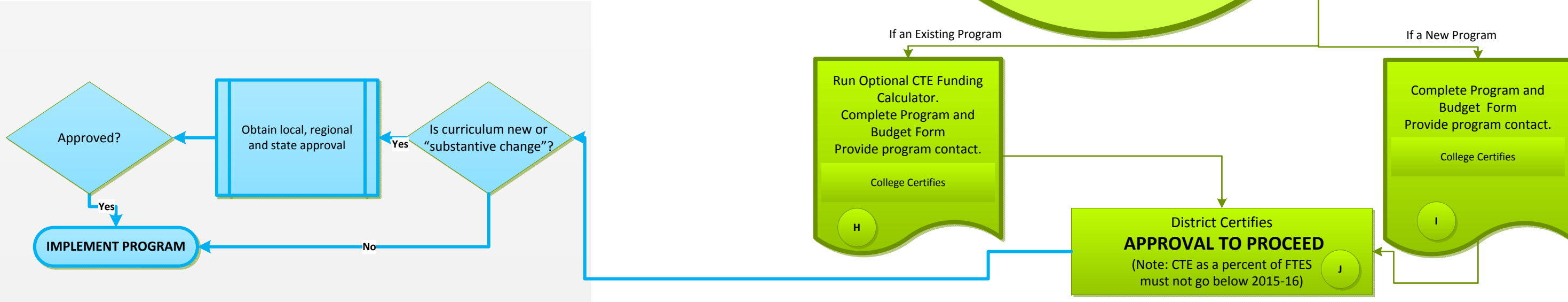
- College Responsibilities
- CoE & RC Responsibilities
- Ineligible Go back to Start
- Implementation Process



**Identify the Standard Source for Labor Market Information:**

- (A) SUPPLY AND DEMAND TABLE provided by the Labor Market Research Centers of Excellence
- (B) MORE THAN 50% OF STUDENTS ATTAINED A LIVING WAGE as evidenced within the LaunchBoard
- (C) VALIDATED EMPLOYER INPUT via Employer Survey or Employer Advisory (local or regional)
- (D) Labor market need has been vetted through a REGIONAL PROGRAM APPROVAL PROCESS
- (E) Labor market need has been vetted through a PRIOR REGIONAL PLANNING PROCESS where this need was an identified regional priority
- (F) Library of CURATED LABOR MARKET RESEARCH compiled by the Centers of Excellence, Sector Navigators, and Deputy Sector Navigators
- (G) The LOCAL BIENNIAL PROGRAM REVIEW process was completed within the last two years and justified labor market need to expand.-

**IMPLEMENTATION**



## Local Share Process Flow

**A**

Complete Contact Information Page

Read Education Code Section 88820-826

Visit Strong Workforce website at <http://doingwhatmatters.cccco.edu/StrongWorkforce.aspx>

**B**

Read the Board of Governors Task Force on Workforce, Job Creation, and a Strong Economy Report Recommendations

FAQ's: <http://doingwhatmatters.cccco.edu/StrongWorkforce/FAQ20MRollout.aspx>

CCCCO Guidance: [Coming Soon!](#)

Planning Review

**C**

Refer to Education Code Section 88820-826

Education Code Section 88820-826: <http://doingwhatmatters.cccco.edu/portals/6/docs/sw/SWB%20Trailer%20Bill%20Language.pdf>

**D**

Labor Market Information

Demand and Supply Data Tools: <http://coecc.net/supply-demand/>

Curated Report by Region: [http://coecc.net/regional\\_resource\\_map.asp](http://coecc.net/regional_resource_map.asp)

Ideas for Growing CTE-FTES: <http://getthejobdone.info/>

**E**

Ineligible? Go Back to Start

**F**

Submit Custom Data for Regional Review

Link to LMI Library: [Coming Soon!](#)

**G**

Metrics, Complete Local Share Projection Template

**H**

If an Existing Program, Run CTE Funding Calculator and complete Program and Budget Form

**I**

If a New Program, Complete Program and Budget Form

**J**

District Certifies – Approval to proceed. Move to Implementation phase