

# FACULTY LEADERSHIP INITIATIVE

*KCCD CONSULTATION COUNCIL*

*MARCH 1, 2022*

---

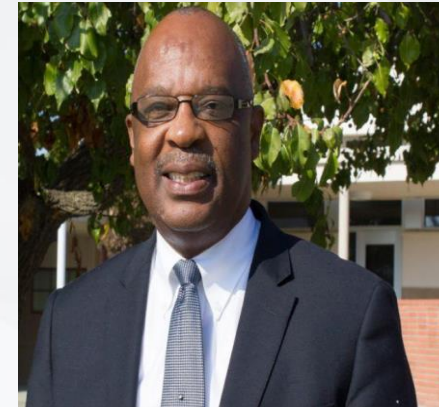
## DISTRICT TEAM LEADING FACULTY LEADERSHIP INITIATIVE



**John Means**  
Vice Chancellor  
Educational Services



**Trudy Gerald**  
Associate Vice Chancellor  
Workforce & Economic  
Development



**Steve Watkin**  
Associate Vice Chancellor  
Enrollment Services

# FACULTY LEADERSHIP INITIATIVE

---

## **IDEA**

SEPTEMBER 2021

Idea for new faculty leadership opportunities discussed at Districtwide Consultation Council.

Based on feedback, created a pilot for Spring 2022 semester to test concepts and fine-tune through an iterative and collaborative process.

## **CALL FOR APPLICATIONS**

NOVEMBER 2021

Vice Chancellor for Human Resources sent email inviting all KCCD full-time faculty to be part of an opportunity to work with the leadership at the KCCD District Office to advance the work of student success with equity through the Office of Educational Services.

## **FIRST FACULTY LEADERSHIP COHORT SELECTED**

DECEMBER 2021

Mid-December all participants selected and confirmed.



# FACULTY LEADERSHIP PARTICIPANTS

THE FOLLOWING FACULTY AGREED TO PARTICIPATE IN THE INITIATIVE, AND TO EXPLORE AND DEVELOP IDEAS IN PREPARATION FOR THE FUTURE OF EDUCATION WITHIN THE KERN COMMUNITY COLLEGE DISTRICT

CERRO COSO COLLEGE	PORTERVILLE COLLEGE	BAKERSFIELD COLLEGE
Jaclyn Kessler	Robert Simpkins	Christine Cruz-Boone
	Rachel Tatro-Duarte	Rudy Menjivar
		Alexandria Rockey
		Maria Wright

# FACULTY LEADERSHIP INITIATIVE

---

**SPRING 2022**

Group meeting convened for introductions and to share and discuss areas of focus

Individual faculty leaders produced list of deliverables for their area

Regular meetings scheduled to update District Office on progress

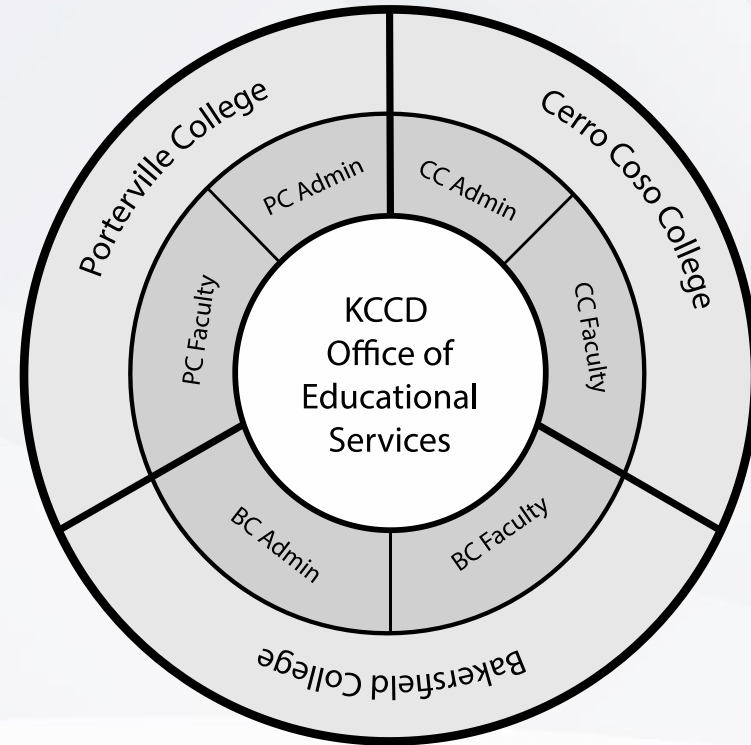
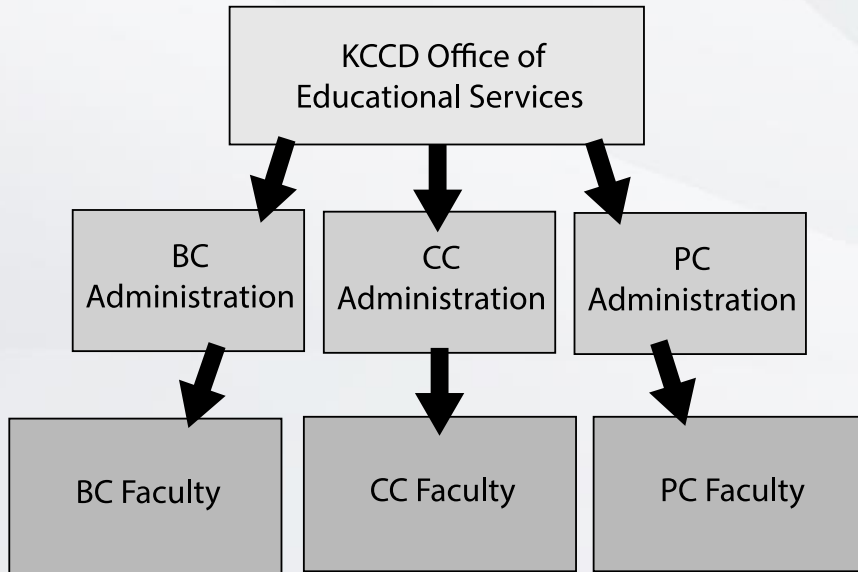


# FACULTY LEADERSHIP INITIATIVE TEAM

## *KCCD CONSULTATION COUNCIL*

FACULTY NAME AND COLLEGE	FACULTY LEADERSHIP ASSIGNMENT
Christine Cruz-Boone BC	<ul style="list-style-type: none"> <li>- ADULT LEARNER OUTREACH</li> <li>- EARLY COLLEGE PROGRAM DEVELOPMENT</li> <li>- PROFESSIONAL DEVELOPMENT - CREDIT &amp; NON-CREDIT INSTRUCTION</li> </ul>
Jaclyn Kessler CC	<ul style="list-style-type: none"> <li>- PROFESSIONAL DEVELOPMENT – MATH/STEM, INSTRUCTIONAL DESIGN, ONLINE AND DIGITAL STRATEGIES TO IMPROVE INSTRUCTION</li> <li>- SUMMER INSTITUTE DEVELOPMENT</li> </ul>
Rudy Menjivar BC	<ul style="list-style-type: none"> <li>- NON-CREDIT ADVANCEMENT AND TRAINING</li> <li>- STUDENT OUTREACH THROUGH ENTREPRENEURSHIP PROGRAMS.</li> </ul>
Robert Simpkins PC	<ul style="list-style-type: none"> <li>- PROJECT DEVELOPMENT - INCREASED FACULTY INPUT &amp; INTERACTION ACROSS THE DISTRICT</li> <li>- PROFESSIONAL DEVELOPMENT - GUIDED PATHWAYS</li> </ul>
Maria Wright BC	<ul style="list-style-type: none"> <li>- FACULTY DIVERSIFICATION AND INTERNSHIP PROJECT</li> </ul>
Alexandria Rockey BC	<ul style="list-style-type: none"> <li>- PROFESSIONAL DEVELOPMENT – INSTRUCTIONAL DESIGN AND ADVANCED TECHNOLOGIES</li> </ul>
Rachel Tatro-Duarte PC	<ul style="list-style-type: none"> <li>- PROFESSIONAL DEVELOPMENT – INSTRUCTIONAL DESIGN AND ADVANCED TECHNOLOGIES</li> </ul>

# FACULTY LEADERSHIP INITIATIVE



# FACULTY LEADERSHIP INITIATIVE

---

## NEXT STEPS?

A Fall Cohort? An Annual Initiative?

Preparing for the Future of Education at KCCD

Investing in Faculty Leadership to Help Ensure Student Success with Equity

