

BC BUSINESS PATHWAY MOMENTUM POINTS

Presentation to: Guided Pathways
Implementation Team

October 9, 2018

MOMENTUM POINTS:

ATTEMPT 15 UNITS - 1ST TERM

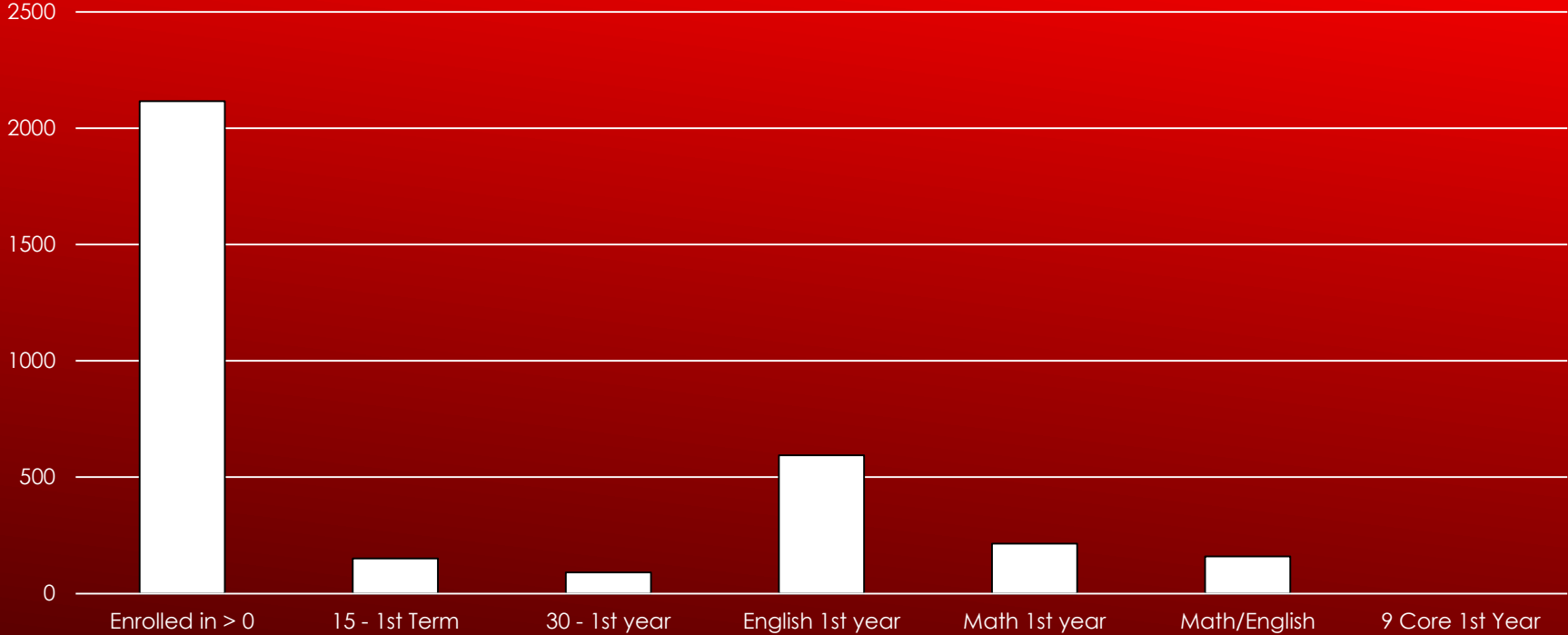
ATTEMPT 30 UNITS - 1ST YEAR

MATH/ENGLISH COMPLETED 1ST YEAR

9 CORE PATHWAY UNITS COMPLETED 1ST YEAR

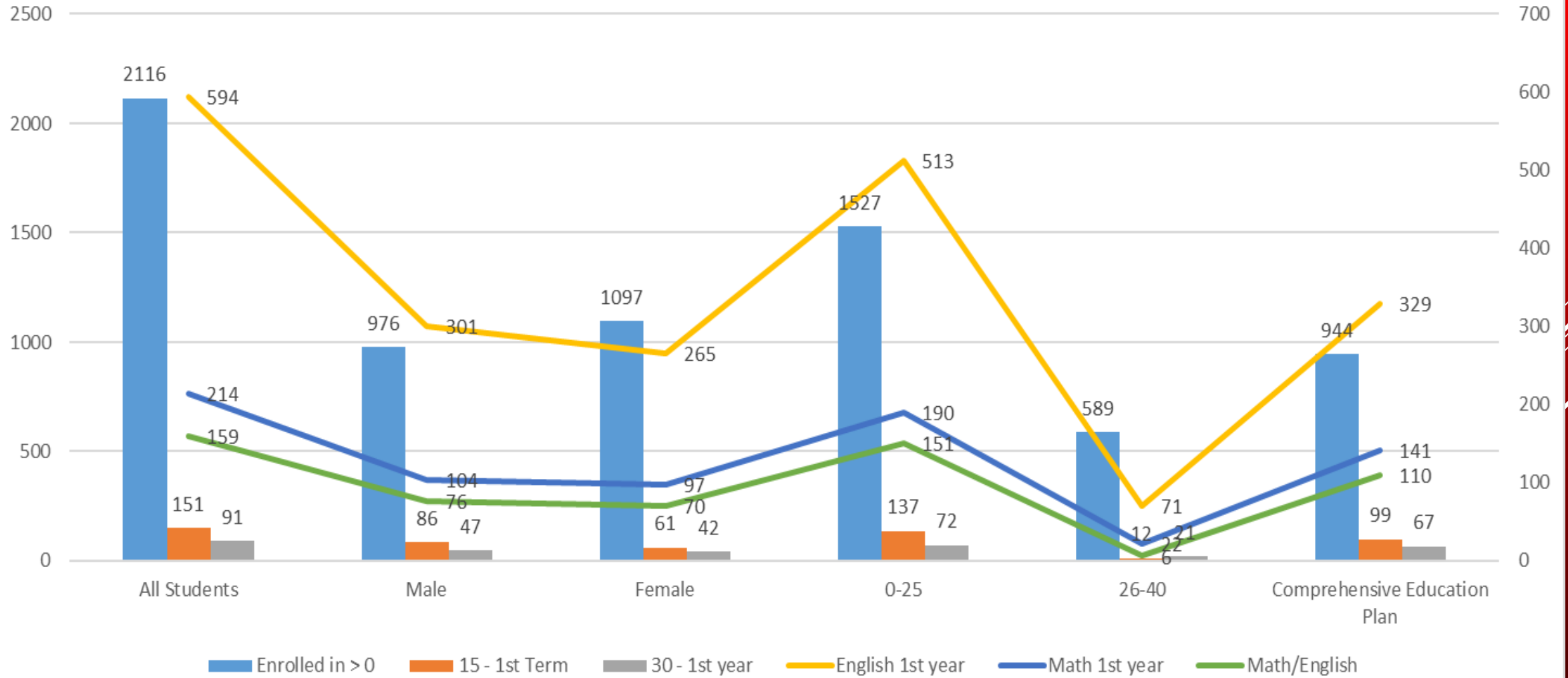
TOTAL ENROLLMENT

BUSINESS PATHWAY



Enrolled in > 0	15 - 1st Term	30 - 1st year	English 1st year	Math 1st year	Math/English	9 Core 1st Year
2116	151	91	594	214	159	
100%	7%	4%	28%	10%	8%	


BUSINESS PATHWAY




OPPORTUNITIES TO SUPPORT STUDENTS:

- Contact/educate first year students
- Workshop for Pathway students
- Presentations at Summer Bridge
- Faculty reiterating expectations to students in class
- Appointments for updated Education Plans
- Counselors recommended Math and English in first year through CSEP
- Starfish emails for students not attaining momentum points
- Student contact and messages throughout key points in semester

DATA IMPROVEMENT:

- Filter students by type of program (AS-T, AA, COA, JSC, and non-program students)
 - Ensure program-specific Math course is counted toward momentum point achievement (e.g., TECM B52, MATH B2/B22/B23)
 - Enhance consistency between Cognos and Starfish data
- 

IMPROVE MATH FIRST YEAR

- Segregate student data
 - AS-T Degree
 - AS Degree w/o Transfer
 - Certificate/Job Skills only
 - Program specific math course (if applicable)
 - MATH B2/22/23
 - TECM B52
- 

- ▶ Leverage Starfish to send out emails reminding 1st and 2nd Term students the significance of taking 15 units in the 1st Term and 30 units in the 1st year.
- ▶ Use the communication emails designed by the Pathway Communication Team to send out emails through Starfish to touch on momentum points throughout the semester as well.
- ▶ Direct conversations with students regarding programs of study information on roster.

MAKE CONTACT