



Facilities and Construction Group Monthly Report for: October 2015

Scheduled Maintenance Projects

Project Title	Project Status	Project Budget/PPR	Project Expenses to Date	Funding Source	Projected Const. Start/Completion	PM Comments	Issues	Photo
Elevator Repair & Replacements / Math Science / Student Services / Language Arts	Complete	\$821,582	\$821,582	BC101/ MG100/ CD100	1/2015- 9/2015	Construction is 100% complete. Final Change Order and NOC going to November Board.		4
Aera STEM Success Center	Bidding Schedule	\$1,000,000	\$68,350	SRID/ Foundation Funds	11/2015 - 5/2016	Contractor selected, and awaiting formal Board approval on 11/3/15. Once approved, construction to start 11/16/15, with completion to be 5/2016.		5
Sports Lighting	Construction	\$253,700	\$23,880	SRID	12/2015- 3/2016	Construction to start December 1, 2015		
Campus Wide Path of Travel	Bidding	\$438,564	\$31,369	SRID	4/2016- 8/2016	Received DSA approved plans. Going to advertise mid January 2016 for April board award of contract.		
Prop 39 Year 2 Exterior Lights	Complete	\$377,503	\$298,572	DO102	2/2015- 9/2015	Construction is 100% complete. NOC going to November Board.		6
Fire Alarm Repair for Code Compliance	DSA	\$1,118,310	\$119,103	PFP/CD100	12/2015- 1/2016	DSA back check comments have been addressed. Awaiting final DSA sign off/approval. Anticipate final DSA approval 11/2015.		
Exterior Way Finding Signage	Design Complete	\$122,700	\$18,900	SRID/ BC101	5/2016- 8/2016	Material is being purchased through a GSA contract. Project to advertise in January 2016 for a construction start of May 2016		
Student Services AHU, Chiller Loop Connection, Chiller Removal Project	Construction	\$876,150	\$829,966	MG100	10/2013 - 11/2015	Project is 95% complete. Commissioning to take place on Nov. 10th, 11th, & 12th. On schedule for 11/23/15 completion.		3

Addition of Cooling to the Gymnasium	Construction	\$562,000	\$43,203	MG100	11/19/15 - 6/16/16	Award of contract going to November Board.	1	
Capital Projects								
Performing Arts Modernization (SAM)	Punch Work	\$19,273,903	\$17,113,781	LB100/ MG100	4/2013 - 6/2015	Project is complete. 1 yr. warranty walk performed 10/15/15. Negotiations are complete and CO 9, 10 and MOU will be going to the November Board.	2	
New Maintenance and Operations Building	DSA	\$4,774,149	\$228,985	MG100	12/2015 - 10/2016	DSA comments received. Comments being addressed by Architect. Anticipate final approval from DSA by 12/2015.	1	
BC Swing Space	Pre-Design / Scoping	\$5,509,600	\$113,722	MG100	TBD	Architect working on a feasibility study for the location of the swing space modulars. The proposed sites are the Panorama green belt at the CDC and the Mt. Vernon locations.	2	
Capital Projects - 5 Year Plan								
Language Arts Remodel (FPP)	New 5 Year Facilities Plan to State	\$15,321,000	\$0	State and Local Bond	TBD	Awaiting State decision on placing Bond on Ballot		
Student Services Mod (IPP)	Approved 5 Year Facilities Plan to State	\$15,686,000	\$35,227	State and Local Bond	TBD	Will be submitted to State Chancellors office in July 2015		
Science Engineering (IPP)	Approved 5 Year Facilities Plan to State	\$47,350,000		State and Local Bond	TBD	Will be submitted to State Chancellors office in July 2016		
Welcome Center (IPP)	Approved 5 Year Facilities Plan to State	\$4,789,000		State and Local Bond	TBD	Will be submitted to State Chancellors office in July 2017		
Fine Arts for Efficiencies (IPP)	Approved 5 Year Facilities Plan to State	\$15,546,000		State and Local Bond	TBD	Will be submitted to State Chancellors office in July 2018		

Issues

1. Without DSA approved plans for the existing fire alarm, the system for the entire bldg. may have to be brought up to code adding \$300,000.
2. DSA pre-design review may delay design 1-2 months.

Project Photographs



Please contact any of the following regarding questions or comments associated with this report:

Eric Mittlestead	Assoc V. Chancellor of Const and Facilities Planning	661.336.5095	eric.mittlestead@kccd.edu
Daniel Reed	Project Manager	661.336.5181	dareed@kccd.edu
Joe DeRosa	Project Manager	661.336.5022	jderosa@kccd.edu
Kevin Mitchell	Project Manager	661.336.5082	kevin.mitchell@kccd.edu
Kim Crews	Administrative Assistant	661.336.5174	kcrews@kccd.edu

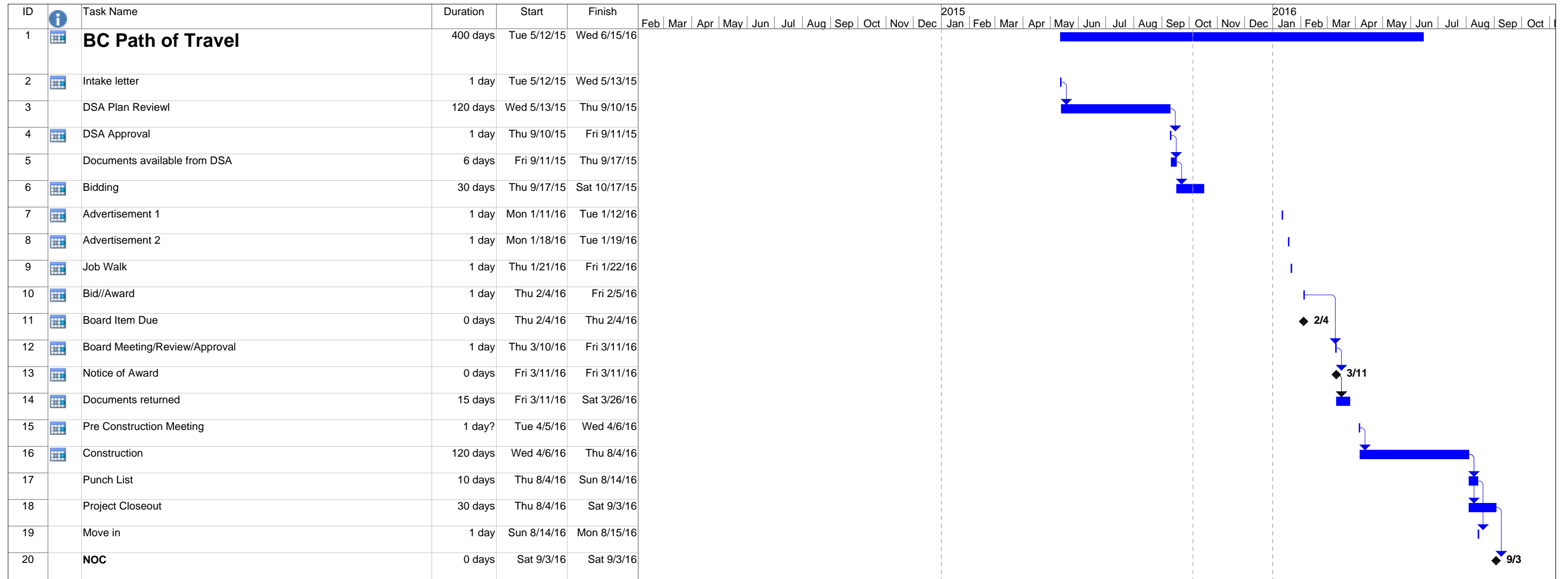
ID	Task Name	Duration	Start	Finish	Predecessors	2015												2016											
						Feb	Mar	Apr	May	Jun	Jul	Aug	Sep	Oct	Nov	Dec	Jan	Feb	Mar	Apr	May	Jun	Jul	Aug	Sep	Oct	Nov	Dec	
1	BC Exterior Wayfinding Signage	260 days	Wed 5/6/15	Thu 1/21/16																									
2	Bidding	30 days	Mon 1/11/16	Wed 2/10/16																									
3	Advertisement 1	0 days	Mon 1/11/16	Mon 1/11/16																									
4	Advertisement 2	0 days	Mon 1/18/16	Mon 1/18/16	3																								
5	Job Walk	1 day	Thu 1/21/16	Fri 1/22/16	4																								
6	Bid//Award	1 day	Thu 1/28/16	Fri 1/29/16	5																								
7	Board Item Due	0 days	Thu 2/4/16	Thu 2/4/16	6																								
8	Board Meeting/Review/Approval	0 days	Thu 3/10/16	Thu 3/10/16																									
9	Notice of Award	0 days	Fri 3/11/16	Fri 3/11/16	7																								
10	Contractor Pre-Construction	1 day	Tue 3/29/16	Wed 3/30/16																									
11	Documents returned	14 days	Fri 3/11/16	Fri 3/25/16	9																								
12	Construction	45 days	Mon 5/16/16	Thu 6/30/16																									
13	Punch List	5 days	Thu 6/30/16	Tue 7/5/16	12																								
14	Project Closeout	15 days	Thu 6/30/16	Fri 7/15/16	12																								
15	NOC	0 days	Fri 7/15/16	Fri 7/15/16	14																								

Project: BC Wayfinding Signage 2015 Date: Thu 10/22/15	Task		Project Summary		Inactive Summary		Manual Summary		External Milestone	
	Split		External Tasks		Manual Task		Start-only		Progress	
	Milestone		External Milestone		Duration-only		Finish-only		Deadline	
	Summary		Inactive Milestone		Manual Summary Rollup		External Tasks			

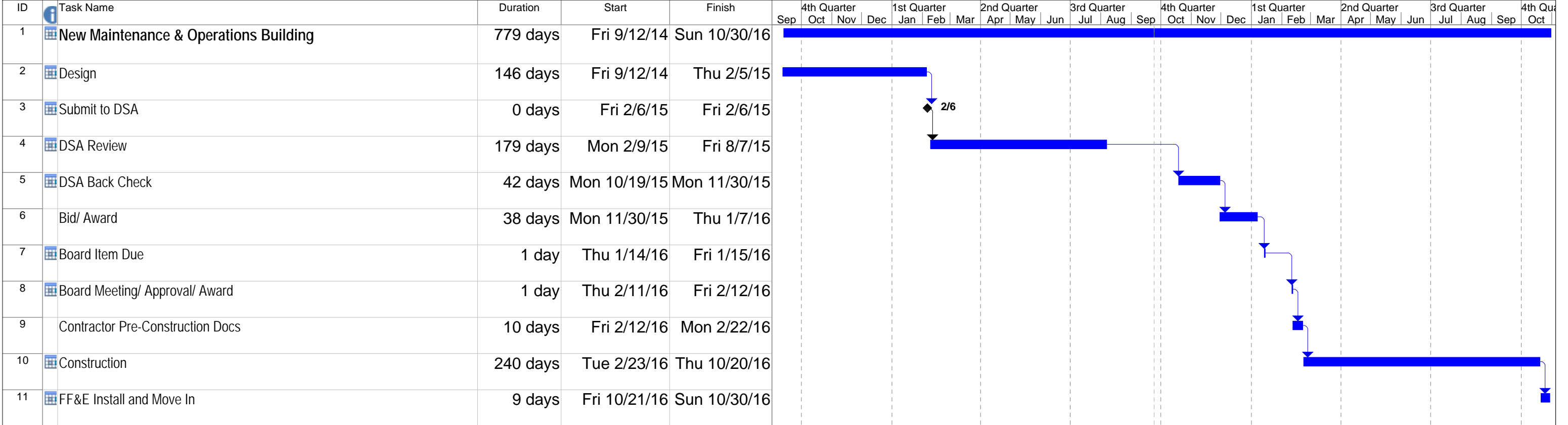
ID	Task Name	Duration	Start	Finish	Predecessors	2015												2016											
						Feb	Mar	Apr	May	Jun	Jul	Aug	Sep	Oct	Nov	Dec	Jan	Feb	Mar	Apr	May	Jun	Jul	Aug	Sep	Oct	Nov	Dec	
1	BC S.S. HVAC Replacements	567 days	Mon 5/11/15	Mon 11/28/16																									
2	Submit Plans to DSA	2 days	Tue 6/17/14	Thu 6/19/14																									
3	DSA Approval	180 days	Fri 6/20/14	Wed 12/17/14	2																								
4	Documents available from DSA	4 days	Wed 12/17/14	Sun 12/21/14	3																								
5	Bidding	44 days	Sun 12/21/14	Tue 2/3/15	4																								
6	Advertisement 1	0 days	Fri 12/19/14	Fri 12/19/14																									
7	Advertisement 2	0 days	Fri 1/2/15	Fri 1/2/15	6																								
8	Job Walk	0 days	Tue 1/6/15	Tue 1/6/15	7																								
9	Bid//Award	3 days	Tue 1/6/15	Fri 1/9/15	8																								
10	Board Item Due	0 days	Thu 2/5/15	Thu 2/5/15	9																								
11	Board Meeting/Review/Approval	0 days	Thu 3/12/15	Thu 3/12/15	10																								
12	Intent to Award	4 days	Thu 3/12/15	Mon 3/16/15	11																								
13	Documents returned	10 days	Mon 3/16/15	Thu 3/26/15	12																								
14	Notice to Proceed	0 days	Thu 3/26/15	Thu 3/26/15	13																								
15	Contractor Pre-Construction	1 day	Thu 4/2/15	Fri 4/3/15	14																								
16	Construction	221 days	Thu 3/26/15	Mon 11/2/15																									
17	Punch List	21 days	Mon 11/2/15	Mon 11/23/15	16																								
18	Project Closeout	60 days	Mon 11/2/15	Fri 1/1/16	16																								
19	Move in	15 days	Mon 11/23/15	Tue 12/8/15	17																								
20	NOC	0 days	Tue 12/8/15	Tue 12/8/15	19																								

Project: BC SS AHU Replacements 10-31-2015

Task		Project Summary		Inactive Summary		Manual Summary		External Milestone	
Split		External Tasks		Manual Task		Start-only		Progress	
Milestone		External Milestone		Duration-only		Finish-only		Deadline	
Summary		Inactive Milestone		Manual Summary Rollup		External Tasks			



Project: BC Path of Travel 2015 Date: Mon 10/31/15	Task		Project Summary		Inactive Summary		Manual Summary		External Milestone	
	Split		External Tasks		Manual Task		Start-only		Progress	
	Milestone		External Milestone		Duration-only		Finish-only		Deadline	
	Summary		Inactive Milestone		Manual Summary Rollup		External Tasks			

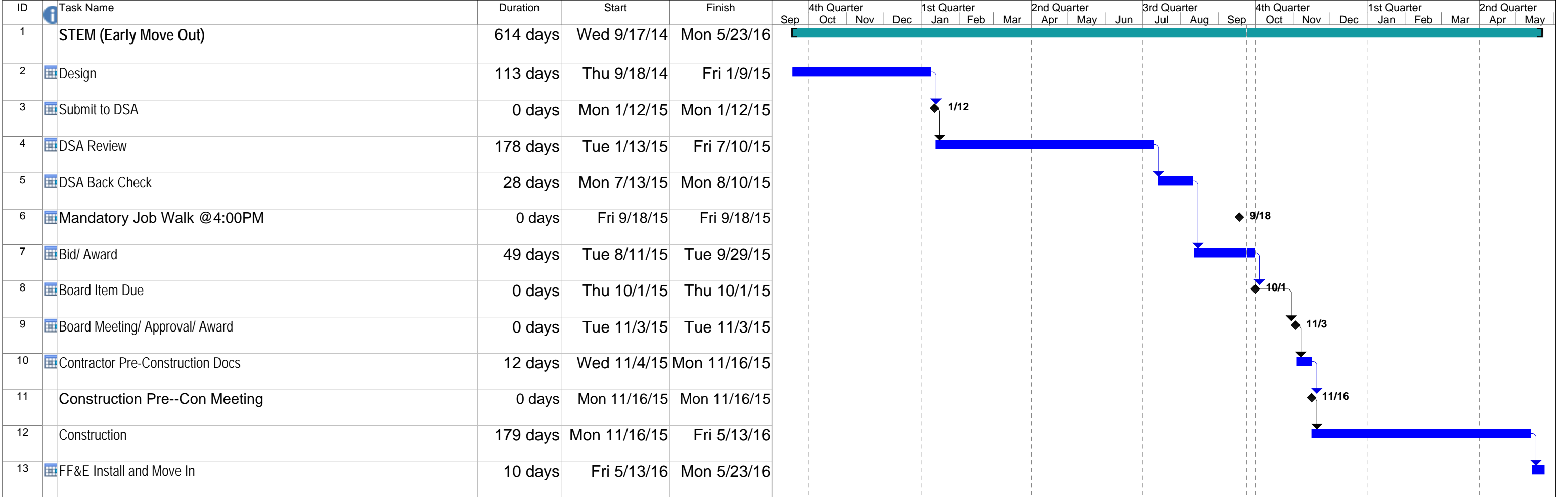


Project: New M&O Building Project Sc
Date: 10-31-15

Task		Project Summary		Inactive Summary		Manual Summary		External Milestone	
Split		External Tasks		Manual Task		Start-only		Progress	
Milestone		External Milestone		Duration-only		Finish-only		Deadline	
Summary		Inactive Milestone		Manual Summary Rollup		External Tasks			

ID	Task Name	Duration	Start	Finish	Timeline																							
					March 1	3/15	4/12	May 1	5/10	6/7	July 1	7/5	8/2	September 1	8/30	9/27	November 1	10/25	11/22	January 1	12/20	1/17	March 1	2/14	3/13	4/10		
1	BC - Campus Wide Fire Alarm Repair	192.98 days	Fri 3/20/15	Fri 4/15/16																								
2	Design	71 days	Mon 3/23/15	Tue 6/2/15																								
3	Submit to DSA	0 days	Tue 6/2/15	Tue 6/2/15																								
4	DSA Review	58 days	Tue 6/2/15	Thu 7/30/15																								
5	DSA Back Check	61 days	Thu 7/30/15	Tue 9/29/15																								
6	Bid/Award	27 days	Tue 9/29/15	Mon 10/26/15																								
7	Board Item Due	0 days	Tue 10/27/15	Tue 10/27/15																								
8	Board Meeting/Approval/ Award	0 days	Thu 12/17/15	Thu 12/17/15																								
9	Contractor Pre-Construction Docs	10 days	Fri 12/18/15	Mon 12/28/15																								
10	Equipment Procurement	55 days	Mon 12/28/15	Sun 2/21/16																								
11	Construction/ Repairs	35 days	Mon 2/22/16	Mon 3/28/16																								
12	FA System Commissioning/ Training	10 days	Tue 3/29/16	Fri 4/8/16																								
13	Warranties/ Close Out	11 days	Mon 4/4/16	Fri 4/15/16																								

Project: BC - Fire Alarm Repair Projec Date: Thu 10-31-15	Task		Project Summary		Manual Task		Start-only		Deadline	
	Split		Inactive Task		Duration-only		Finish-only		Progress	
	Milestone		Inactive Milestone		Manual Summary Rollup		External Tasks		Manual Progress	
	Summary		Inactive Summary		Manual Summary		External Milestone			



Project: Aera STEM Project
Schedule Date: 10-31-15

Task		Project Summary			Inactive Summary		Manual Summary		External Milestone	
Split		External Tasks			Manual Task		Start-only		Progress	
Milestone		External Milestone			Duration-only		Finish-only		Deadline	
Summary		Inactive Milestone			Manual Summary Rollup		External Tasks			