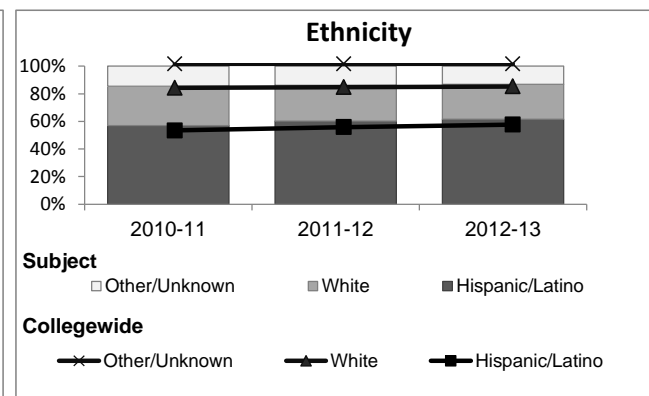
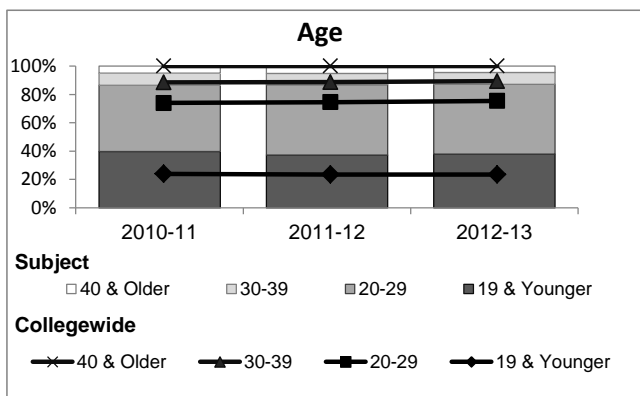
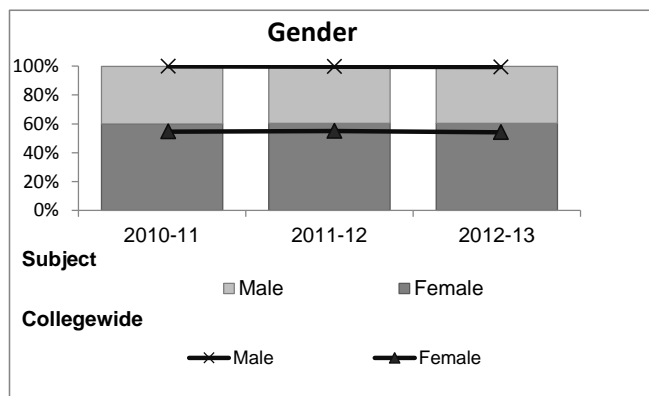


English

Student Demographic Information

Student Headcount	2008-09		2009-10		2010-11		2011-12		2012-13			
	#	% change - Prior Yr	#	% change - Prior Yr	#	% change - Prior Yr	#	% change - Prior Yr	Subject		Collegewide	
									#	% change - Prior Yr	#	% change - Prior Yr
Unduplicated ²	6,028	--	6,033	0%	6,356	5%	5,553	-13%	5,783	4%	24,186	-4%

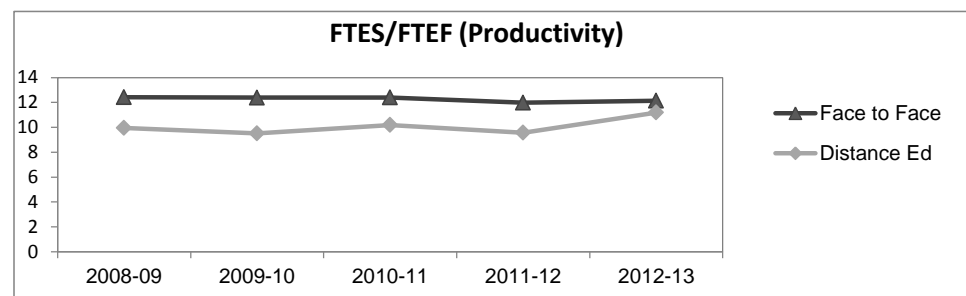
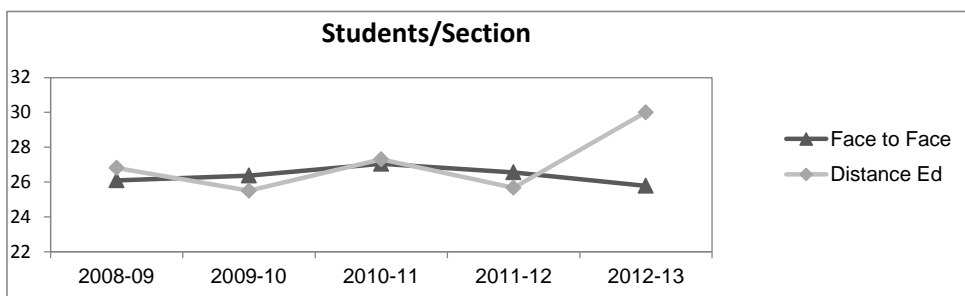
	2008-09		2009-10		2010-11		2011-12		2012-13			
	#	%	#	%	#	%	#	%	Subject		Collegewide	
									#	%	#	%
Gender												
Female	3,647	61%	3,542	59%	3,813	60%	3,350	60%	3,491	60%	13,002	54%
Male	2,373	39%	2,485	41%	2,528	40%	2,188	39%	2,280	39%	11,007	46%
Unknown	8	0%	6	0%	15	0%	15	0%	12	0%	177	1%
Age												
19 & Younger	2,649	44%	2,653	44%	2,532	40%	2,069	37%	2,200	38%	5,879	24%
20-29	2,639	44%	2,630	44%	2,972	47%	2,756	50%	2,844	49%	12,407	51%
30-39	459	8%	482	8%	542	9%	449	8%	490	8%	3,344	14%
40 & Older	281	5%	268	4%	310	5%	279	5%	249	4%	2,555	11%
Ethnicity												
African American	351	6%	313	5%	359	6%	301	5%	273	5%	1,479	6%
American Indian	49	1%	42	1%	51	1%	40	1%	28	0%	148	1%
Asian/Filipino/Pac Islander	281	5%	300	5%	308	5%	245	4%	250	4%	1,180	5%
Hispanic/Latino	3,073	51%	3,360	56%	3,619	57%	3,342	60%	3,568	62%	13,518	56%
White	2,058	34%	1,831	30%	1,810	28%	1,440	26%	1,452	25%	6,706	28%
Two or more races	124	2%	149	2%	200	3%	184	3%	209	4%	802	3%
Unknown	92	2%	38	1%	9	0%	1	0%	3	0%	353	1%



English

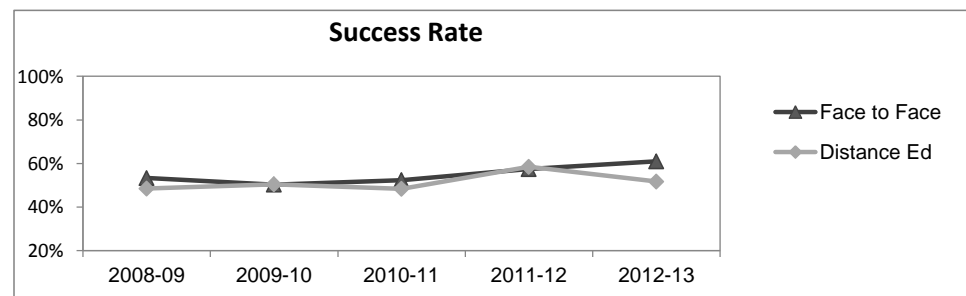
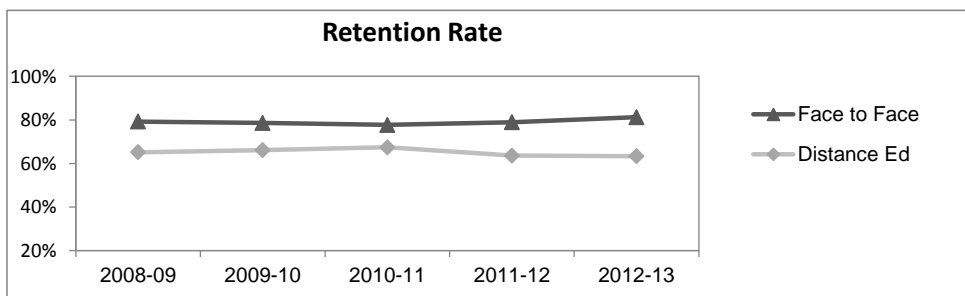
Course Enrollments - Productivity

	2008-09			2009-10			2010-11			2011-12			2012-13			2012-13		
	F-t-F ³	DE	Total	F-t-F ³	DE	Total	F-t-F ³	DE	Total	F-t-F ³	DE	Total	Subject			Collegewide		
	F-t-F ³	DE	Total	F-t-F ³	DE	Total	F-t-F ³	DE	Total	F-t-F ³	DE	Total	F-t-F ³	DE	Total	F-t-F ³	DE	Total
Number of Sections	279	11	290	269	10	279	277	10	287	250	3	253	275	2	277	3,285	193	3,478
Enrollment ⁴																		
Census	7,280	295	7,575	7,094	255	7,349	7,492	273	7,765	6,639	77	6,716	7,091	60	7,151	99,531	8,125	107,656
Students/Section ⁵	26	27	26	26	26	26	27	27	27	27	26	27	26	30	26	30	42	31
Productivity																		
FTES ⁶	991.0	35.1	1,026.1	965.0	31.7	996.7	1,019.9	33.9	1,053.8	925.1	9.6	934.7	982.8	7.5	990.3	11,680.8	901.0	12,581.8
FTEF ⁶	79.8	3.5	83.4	77.9	3.3	81.2	82.3	3.3	85.6	77.2	1.0	78.2	81.0	0.7	81.7	667.0	37.4	704.4
Contract			58%			61%			62%			67%			69%			61%
Overload			3%			4%			4%			4%			4%			9%
Adjunct			27%			25%			26%			21%			18%			22%
Summer			12%			11%			9%			8%			8%			7%
FTES/FTEF ⁷	12.4	9.9	12.3	12.4	9.5	12.3	12.4	10.2	12.3	12.0	9.6	11.9	12.1	11.2	12.1	17.5	24.1	17.9



Outcomes

	2008-09			2009-10			2010-11			2011-12			2012-13			2012-13		
	F-t-F ³	DE	Total	F-t-F ³	DE	Total	F-t-F ³	DE	Total	F-t-F ³	DE	Total	Subject			Collegewide		
	F-t-F ³	DE	Total	F-t-F ³	DE	Total	F-t-F ³	DE	Total	F-t-F ³	DE	Total	F-t-F ³	DE	Total	F-t-F ³	DE	Total
Retention Rate ⁸	79.3%	65.2%	78.7%	78.6%	66.1%	78.2%	77.7%	67.4%	77.4%	79.0%	63.6%	78.8%	81.3%	63.3%	81.1%	85.9%	76.0%	85.1%
Success Rate ⁸	53.3%	48.4%	53.1%	50.3%	50.4%	50.3%	52.4%	48.4%	52.2%	57.4%	58.4%	57.4%	60.9%	51.7%	60.9%	69.1%	53.4%	67.9%



English

Degrees - Certificates

	2008-09			2009-10			2010-11			2011-12			2012-13			2012-13		
	AA	AS	CERT	AA	AS	CERT	AA	AS	CERT	AA	AS	CERT	Subject			Collegewide		
	AA	AS	CERT	AA	AS	CERT	AA	AS	CERT	AA	AS	CERT	AA	AS	CERT	AA	AS	CERT
Awards related to or contributed to by English																		
English	10	0	0	7	0	0	15	0	0	10	0	0	5	0	0			
Total Awards by Type	10	0	0	7	0	0	15	0	0	10	0	0	5	0	0	534	260	969
% of total awards by type	100%	0%	0%	100%	0%	0%	100%	0%	0%	100%	0%	0%	100%	0%	0%	30%	15%	55%
Total Awards	10			7			15			10			5			1,763		
All Allied Health Majors	0	173	122	1	186	106	0	141	213	1	158	227	0	119	194			
Business	97	0	138	90	0	160	97	0	47	102	0	53	104	0	82			
Social & Behavioral Sciences	113	19	14	136	19	7	180	12	8	145	13	11	165	3	10			
Liberal Studies	86	0	0	86	0	0	79	0	0	78	0	0	91	0	0			
Liberal Arts/ Science	233	0	0	164	1	0	133	1	0	85	2	0	61	0	0			

Notes¹ Source: ODS Reports (July, 2013)² Student Headcount, **Unduplicated**: Number of students enrolled on census day, where each student is counted one time.³ F-t-F: Face to Face instructional delivery mode.⁴ Enrollment: Every course in which students are enrolled on census day.⁵ Students/Section: Student enrollments per section on census day. Cross-listed sections are not combined.⁶ Acronyms FTES and FTEF represent full-time equivalent students and full-time equivalent faculty, respectively.⁷ FTES/FTEF: A measurement of productivity where the generally accepted target is 17.5.⁸ Success rate numerator: Number of course enrollments with a successful passing grade (A,B,C,P/CR).

Retention rate numerator: Number of course enrollments retained through the semester (grade = A,B,C,P/CR,D,F,NP/NC,I).

Success and Retention rate denominator: Number of enrollments retained (A,B,C,P/CR,D,F,NP/NC,I), withdrawn (W), and dropped after Census Day (DR).