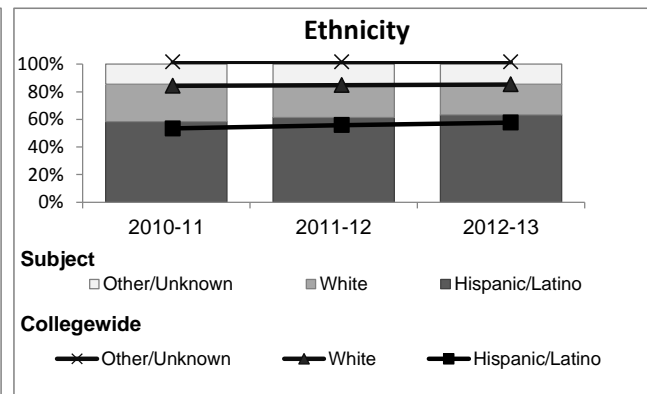
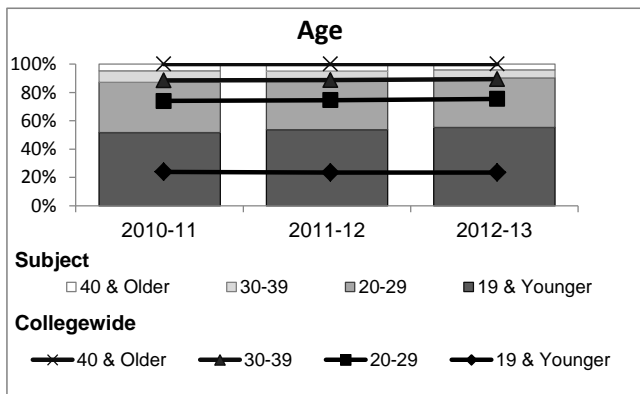
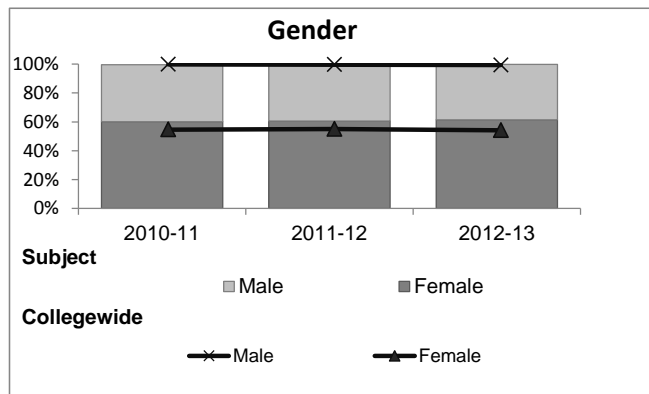


Student Development

Student Demographic Information

Student Headcount	2008-09		2009-10		2010-11		2011-12		2012-13		2012-13	
	#	% change - Prior Yr	#	% change - Prior Yr	#	% change - Prior Yr	#	% change - Prior Yr	Subject		Collegewide	
									#	% change - Prior Yr	#	% change - Prior Yr
Unduplicated ²	3,932	--	3,161	-20%	3,461	9%	3,679	6%	2,679	-27%	24,186	-4%

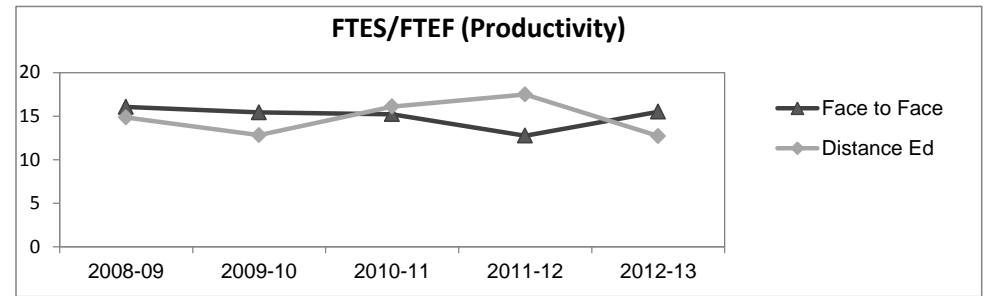
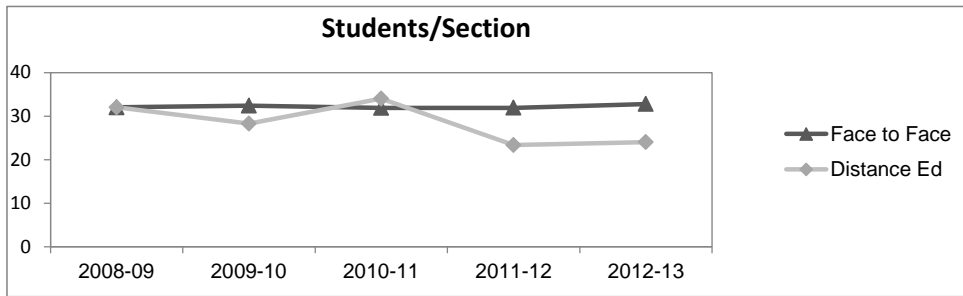
	2008-09		2009-10		2010-11		2011-12		2012-13		2012-13	
	#	%	#	%	#	%	#	%	Subject		Collegewide	
									#	%	#	%
Gender												
Female	2,468	63%	1,878	59%	2,082	60%	2,225	60%	1,646	61%	13,002	54%
Male	1,459	37%	1,281	41%	1,366	39%	1,434	39%	1,027	38%	11,007	46%
Unknown	5	0%	2	0%	13	0%	20	1%	6	0%	177	1%
Age												
19 & Younger	2,139	54%	1,811	57%	1,789	52%	1,982	54%	1,484	55%	5,879	24%
20-29	1,329	34%	970	31%	1,230	36%	1,273	35%	935	35%	12,407	51%
30-39	275	7%	234	7%	279	8%	243	7%	154	6%	3,344	14%
40 & Older	189	5%	146	5%	163	5%	181	5%	106	4%	2,555	11%
Ethnicity												
African American	311	8%	226	7%	199	6%	224	6%	115	4%	1,479	6%
American Indian	34	1%	17	1%	21	1%	17	0%	7	0%	148	1%
Asian/Filipino/Pac Islander	228	6%	188	6%	176	5%	191	5%	153	6%	1,180	5%
Hispanic/Latino	2,167	55%	1,832	58%	2,020	58%	2,255	61%	1,694	63%	13,518	56%
White	1,069	27%	812	26%	940	27%	876	24%	599	22%	6,706	28%
Two or more races	77	2%	68	2%	99	3%	113	3%	106	4%	802	3%
Unknown	46	1%	18	1%	6	0%	3	0%	5	0%	353	1%



Student Development

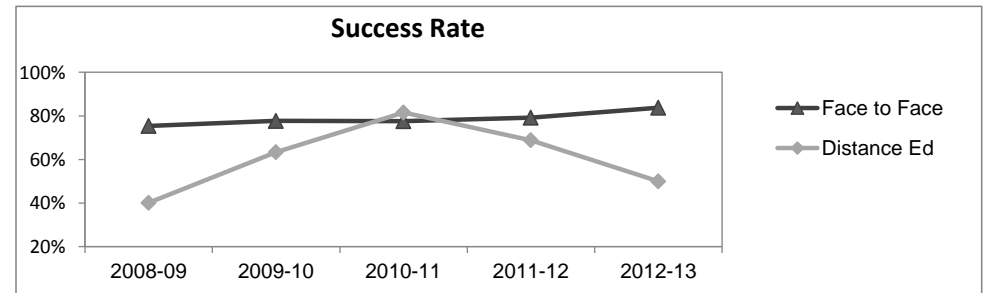
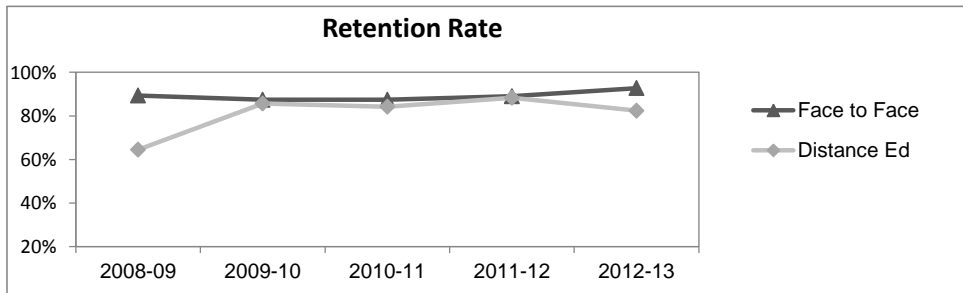
Course Enrollments - Productivity

													2012-13					
	2008-09			2009-10			2010-11			2011-12			Subject			Collegewide		
	F-t-F ³	DE	Total	F-t-F ³	DE	Total	F-t-F ³	DE	Total	F-t-F ³	DE	Total	F-t-F ³	DE	Total	F-t-F ³	DE	Total
Number of Sections	127	12	139	100	4	104	117	1	118	134	3	137	98	1	99	3,285	193	3,478
Enrollment ⁴																		
Census	4,064	384	4,448	3,239	113	3,352	3,731	34	3,765	4,277	70	4,347	3,211	24	3,235	99,531	8,125	107,656
Students/Section ⁵	32	32	32	32	28	32	32	34	32	32	23	32	33	24	33	30	42	31
Productivity																		
FTES ⁶	120.5	25.7	146.2	89.0	4.7	93.7	97.9	0.5	98.4	86.7	1.2	87.8	57.1	0.4	57.5	11,680.8	901.0	12,581.8
FTEF ⁶	7.5	1.7	9.2	5.8	0.4	6.1	6.4	0.0	6.5	6.8	0.1	6.9	3.7	0.0	3.7	667.0	37.4	704.4
Contract			65%			41%			35%			47%			53%			61%
Overload			1%			1%			8%			15%			15%			9%
Adjunct			31%			47%			45%			31%			27%			22%
Summer			3%			11%			12%			7%			4%			7%
FTES/FTEF ⁷	16.0	14.9	15.8	15.4	12.8	15.3	15.2	16.1	15.2	12.7	17.5	12.8	15.5	12.7	15.5	17.5	24.1	17.9



Outcomes

													2012-13					
	2008-09			2009-10			2010-11			2011-12			Subject			Collegewide		
	F-t-F ³	DE	Total	F-t-F ³	DE	Total	F-t-F ³	DE	Total	F-t-F ³	DE	Total	F-t-F ³	DE	Total	F-t-F ³	DE	Total
Retention Rate ⁸	89.3%	64.5%	87.0%	87.4%	85.7%	87.3%	87.4%	84.2%	87.4%	89.0%	88.3%	89.0%	92.8%	82.4%	92.6%	85.9%	76.0%	85.1%
Success Rate ⁸	75.4%	40.1%	72.0%	77.7%	63.4%	77.2%	77.6%	81.6%	77.6%	79.2%	68.8%	79.0%	83.7%	50.0%	83.3%	69.1%	53.4%	67.9%



Student Development

Degrees - Certificates

	2008-09			2009-10			2010-11			2011-12			2012-13			2012-13		
	AA	AS	CERT	AA	AS	CERT	AA	AS	CERT	AA	AS	CERT	Subject			Collegewide		
	AA	AS	CERT	AA	AS	CERT	AA	AS	CERT	AA	AS	CERT	AA	AS	CERT	AA	AS	CERT
* There are no awards associated with this Department or Subject																		
0	0	0	0	0	0	0	0	0	0	0	0	0	0	0	0			
Total Awards by Type	0	0	0	0	0	0	0	0	0	0	0	0	0	0	0	534	260	969
% of total awards by type																30%	15%	55%
Total Awards	0			0			0			0			0			1,763		

Notes¹ Source: ODS Reports (July, 2013)² Student Headcount, **Unduplicated**: Number of students enrolled on census day, where each student is counted one time.³ F-t-F: Face to Face instructional delivery mode.⁴ Enrollment: Every course in which students are enrolled on census day.⁵ Students/Section: Student enrollments per section on census day. Cross-listed sections are not combined.⁶ Acronyms FTES and FTEF represent full-time equivalent students and full-time equivalent faculty, respectively.⁷ FTES/FTEF: A measurement of productivity where the generally accepted target is 17.5.⁸ Success rate numerator: Number of course enrollments with a successful passing grade (A,B,C,P/CR).

Retention rate numerator: Number of course enrollments retained through the semester (grade = A,B,C,P/CR,D,F,NP/NC,I).

Success and Retention rate denominator: Number of enrollments retained (A,B,C,P/CR,D,F,NP/NC,I), withdrawn (W), and dropped after Census Day (DR).