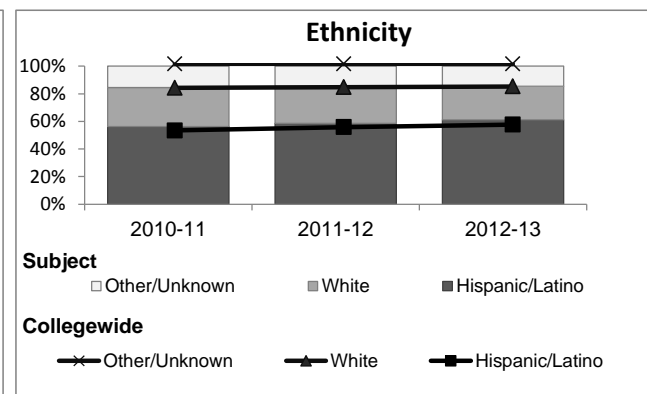
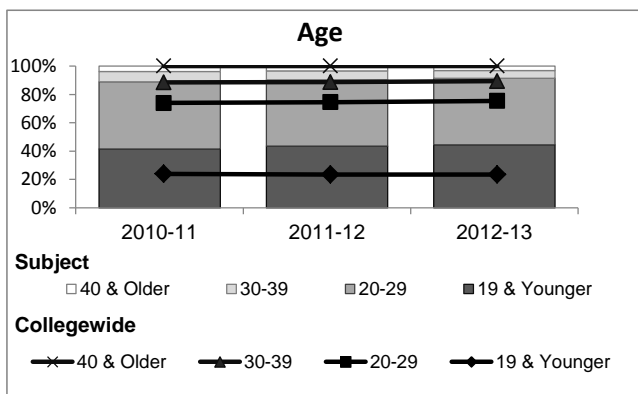
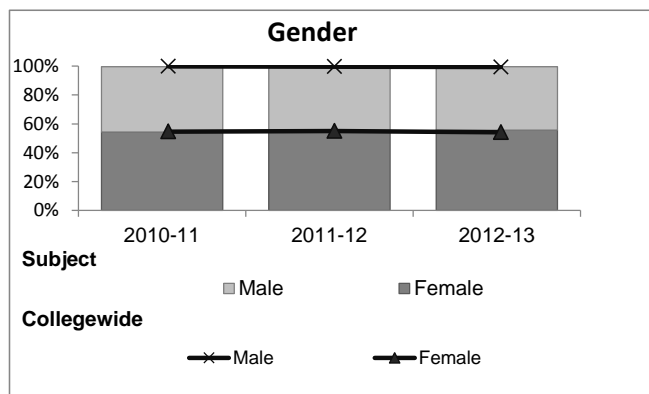


Political Science

Student Demographic Information

Student Headcount	2008-09		2009-10		2010-11		2011-12		2012-13		2012-13	
	#	% change - Prior Yr	#	% change - Prior Yr	#	% change - Prior Yr	#	% change - Prior Yr	Subject		Collegewide	
									#	% change - Prior Yr	#	% change - Prior Yr
Unduplicated ²	2,899	--	3,211	11%	3,297	3%	2,769	-16%	2,648	-4%	24,186	-4%

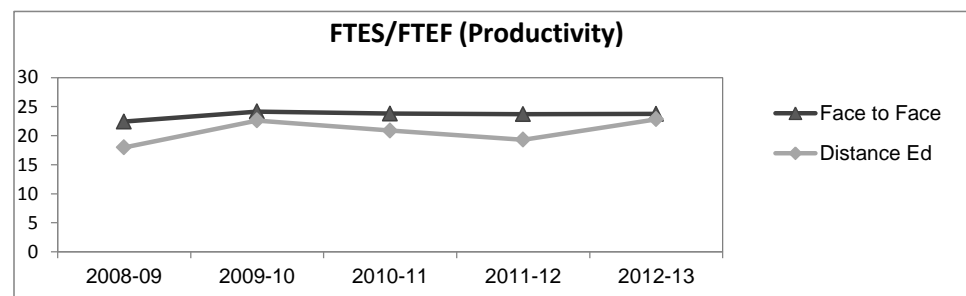
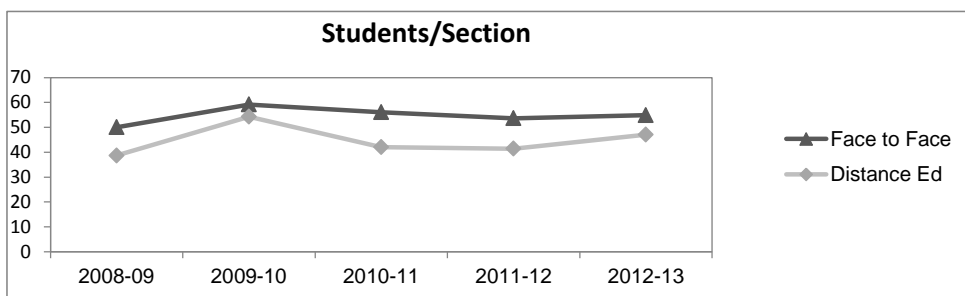
	2008-09		2009-10		2010-11		2011-12		2012-13		2012-13	
	#	%	#	%	#	%	#	%	Subject		Collegewide	
									#	%	#	%
Gender												
Female	1,645	57%	1,747	54%	1,793	54%	1,533	55%	1,474	56%	13,002	54%
Male	1,248	43%	1,457	45%	1,491	45%	1,225	44%	1,165	44%	11,007	46%
Unknown	6	0%	7	0%	13	0%	11	0%	9	0%	177	1%
Age												
19 & Younger	1,335	46%	1,391	43%	1,374	42%	1,208	44%	1,181	45%	5,879	24%
20-29	1,263	44%	1,465	46%	1,563	47%	1,292	47%	1,241	47%	12,407	51%
30-39	191	7%	234	7%	240	7%	181	7%	145	5%	3,344	14%
40 & Older	110	4%	121	4%	120	4%	88	3%	81	3%	2,555	11%
Ethnicity												
African American	157	5%	193	6%	179	5%	127	5%	125	5%	1,479	6%
American Indian	22	1%	26	1%	20	1%	12	0%	7	0%	148	1%
Asian/Filipino/Pac Islander	210	7%	186	6%	190	6%	167	6%	151	6%	1,180	5%
Hispanic/Latino	1,479	51%	1,703	53%	1,856	56%	1,624	59%	1,622	61%	13,518	56%
White	911	31%	998	31%	931	28%	745	27%	644	24%	6,706	28%
Two or more races	73	3%	83	3%	116	4%	89	3%	95	4%	802	3%
Unknown	47	2%	22	1%	5	0%	5	0%	4	0%	353	1%



Political Science

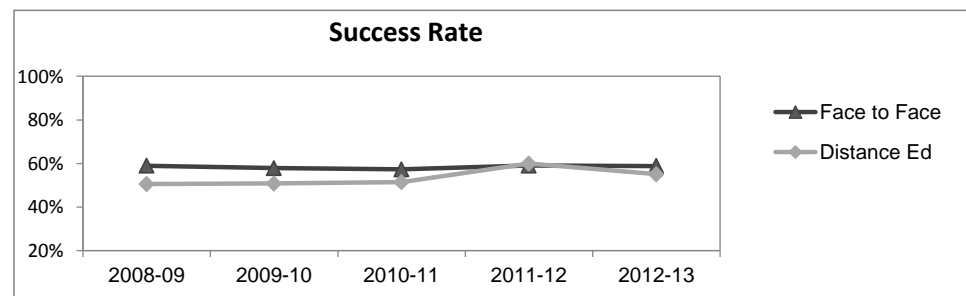
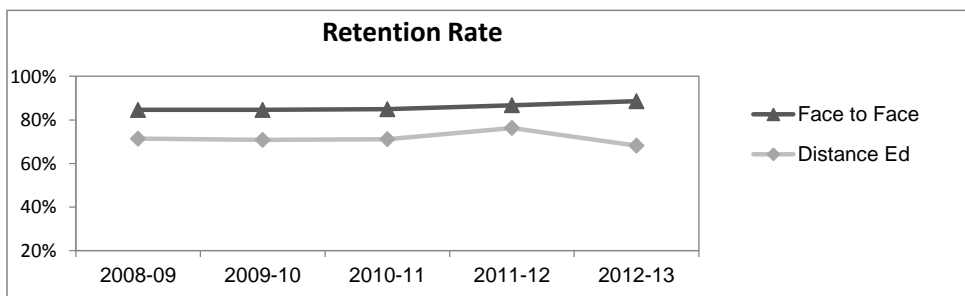
Course Enrollments - Productivity

	2008-09			2009-10			2010-11			2011-12			2012-13			2012-13		
	F-t-F ³	DE	Total	F-t-F ³	DE	Total	F-t-F ³	DE	Total	F-t-F ³	DE	Total	Subject	Subject	Subject	Collegewide	Collegewide	Collegewide
Number of Sections	55	9	64	50	8	58	57	8	65	51	5	56	48	4	52	3,285	193	3,478
Enrollment ⁴																		
Census	2,751	348	3,099	2,958	434	3,392	3,196	336	3,532	2,735	207	2,942	2,633	188	2,821	99,531	8,125	107,656
Students/Section ⁵	50	39	48	59	54	58	56	42	54	54	41	53	55	47	54	30	42	31
Productivity																		
FTES ⁶	291.3	32.3	323.6	316.2	40.7	356.9	334.7	31.3	366.0	285.0	19.3	304.2	277.8	18.3	296.0	11,680.8	901.0	12,581.8
FTEF ⁶	13.0	1.8	14.8	13.1	1.8	14.9	14.1	1.5	15.6	12.0	1.0	13.0	11.7	0.8	12.5	667.0	37.4	704.4
Contract			41%			40%			33%			40%			58%			61%
Overload			11%			16%			17%			14%			18%			9%
Adjunct			34%			29%			36%			36%			13%			22%
Summer			14%			15%			14%			11%			12%			7%
FTES/FTEF ⁷	22.4	18.0	21.9	24.1	22.6	24.0	23.8	20.9	23.5	23.7	19.3	23.3	23.7	22.8	23.7	17.5	24.1	17.9



Outcomes

	2008-09			2009-10			2010-11			2011-12			2012-13			2012-13		
	F-t-F ³	DE	Total	F-t-F ³	DE	Total	F-t-F ³	DE	Total	F-t-F ³	DE	Total	Subject	Subject	Subject	Collegewide	Collegewide	Collegewide
Retention Rate ⁸	84.6%	71.4%	83.1%	84.6%	70.8%	82.8%	84.9%	71.1%	83.6%	86.7%	76.3%	86.0%	88.6%	68.2%	87.1%	85.9%	76.0%	85.1%
Success Rate ⁸	59.0%	50.6%	58.0%	57.9%	50.8%	57.0%	57.3%	51.5%	56.7%	59.1%	59.9%	59.1%	58.8%	55.1%	58.6%	69.1%	53.4%	67.9%



Political Science

Degrees - Certificates

	2008-09			2009-10			2010-11			2011-12			2012-13			2012-13		
	AA	AS	CERT	AA	AS	CERT	AA	AS	CERT	AA	AS	CERT	Subject			Collegewide		
	AA	AS	CERT	AA	AS	CERT	AA	AS	CERT	AA	AS	CERT	AA	AS	CERT	AA	AS	CERT
Awards related to or contributed to by Social Science																		
Chicano Studies	2	0	0	2	0	0	4	0	0	1	0	0	3	0	0			
Economics	7	0	0	5	0	0	2	0	0	3	0	0	2	0	0			
History	16	0	0	16	0	0	28	0	0	20	0	0	17	0	0			
Political Science	6	0	0	5	0	0	5	0	0	5	0	0	9	0	0			
Political Sci-Domestic Policy	1	0	0	1	0	0	1	0	0	1	0	0	3	0	0			
Political Sci-Internl Relation	1	0	0	2	0	0	1	0	0	0	0	0	1	0	0			
Total Awards by Type	33	0	0	31	0	0	41	0	0	30	0	0	35	0	0	534	260	969
% of total awards by type	100%	0%	0%	100%	0%	0%	100%	0%	0%	100%	0%	0%	100%	0%	0%	30%	15%	55%
Total Awards	33			31			41			30			35			1,763		
Liberal Studies	86	0	0	86	0	0	79	0	0	78	0	0	91	0	0			
Liberal Arts/ Science	233	0	0	164	1	0	133	1	0	85	2	0	61	0	0			

Notes¹ Source: ODS Reports (July, 2013)² Student Headcount, *Unduplicated*: Number of students enrolled on census day, where each student is counted one time.³ F-t-F: Face to Face instructional delivery mode.⁴ Enrollment: Every course in which students are enrolled on census day.⁵ Students/Section: Student enrollments per section on census day. Cross-listed sections are not combined.⁶ Acronyms FTES and FTEF represent full-time equivalent students and full-time equivalent faculty, respectively.⁷ FTES/FTEF: A measurement of productivity where the generally accepted target is 17.5.⁸ Success rate numerator: Number of course enrollments with a successful passing grade (A,B,C,P/CR).

Retention rate numerator: Number of course enrollments retained through the semester (grade = A,B,C,P/CR,D,F,NP/NC,I).

Success and Retention rate denominator: Number of enrollments retained (A,B,C,P/CR,D,F,NP/NC,I), withdrawn (W), and dropped after Census Day (DR).