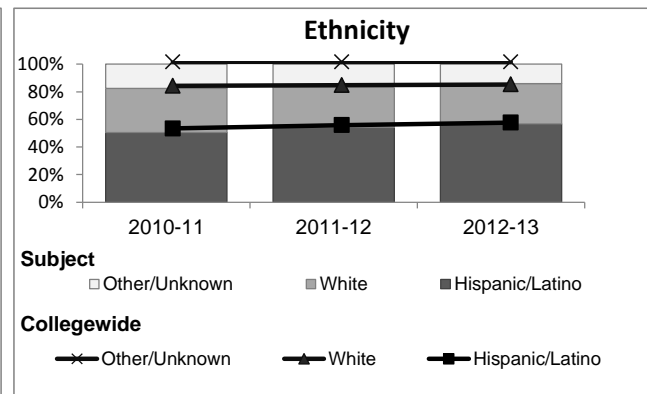
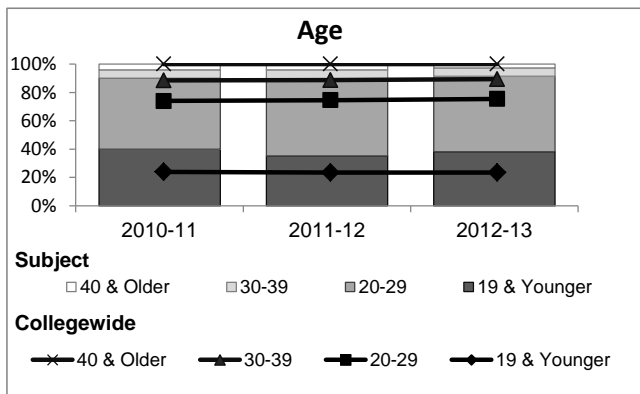
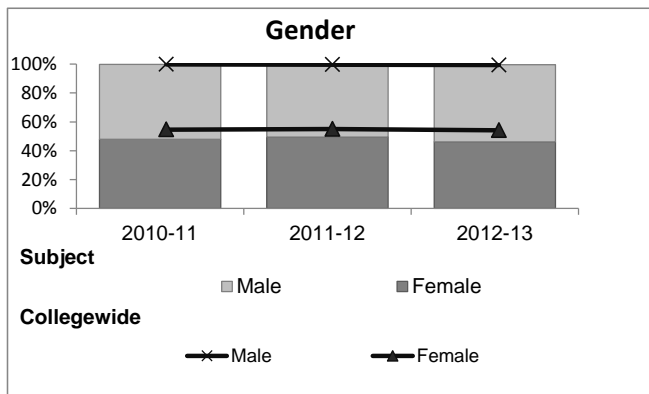


## Economics

### Student Demographic Information

Student Headcount	2008-09		2009-10		2010-11		2011-12		2012-13			
	#	% change - Prior Yr	#	% change - Prior Yr	#	% change - Prior Yr	#	% change - Prior Yr	Subject		Collegewide	
									#	% change - Prior Yr	#	% change - Prior Yr
Unduplicated <sup>2</sup>	1,530	--	1,674	9%	1,759	5%	1,283	-27%	1,434	12%	24,186	-4%

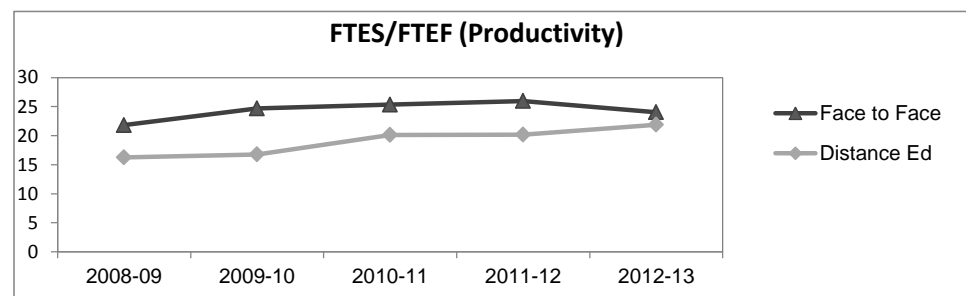
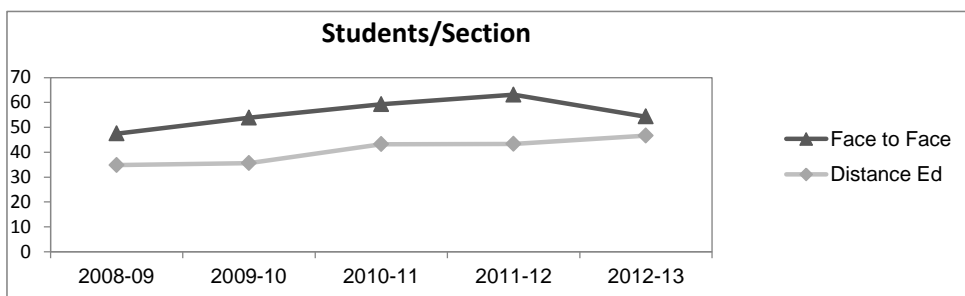
	2008-09		2009-10		2010-11		2011-12		2012-13			
	#	%	#	%	#	%	#	%	Subject		Collegewide	
									#	%	#	%
<b>Gender</b>												
Female	723	47%	799	48%	843	48%	635	49%	663	46%	13,002	54%
Male	805	53%	873	52%	912	52%	639	50%	765	53%	11,007	46%
Unknown	2	0%	2	0%	4	0%	9	1%	6	0%	177	1%
<b>Age</b>												
19 & Younger	609	40%	712	43%	702	40%	453	35%	546	38%	5,879	24%
20-29	771	50%	782	47%	883	50%	691	54%	767	53%	12,407	51%
30-39	96	6%	121	7%	104	6%	87	7%	85	6%	3,344	14%
40 & Older	54	4%	59	4%	70	4%	52	4%	36	3%	2,555	11%
<b>Ethnicity</b>												
African American	96	6%	119	7%	115	7%	72	6%	59	4%	1,479	6%
American Indian	15	1%	15	1%	12	1%	7	1%	1	0%	148	1%
Asian/Filipino/Pac Islander	132	9%	156	9%	121	7%	89	7%	90	6%	1,180	5%
Hispanic/Latino	670	44%	763	46%	887	50%	695	54%	815	57%	13,518	56%
White	564	37%	563	34%	562	32%	376	29%	419	29%	6,706	28%
Two or more races	27	2%	40	2%	56	3%	42	3%	49	3%	802	3%
Unknown	26	2%	18	1%	6	0%	2	0%	1	0%	353	1%



## Economics

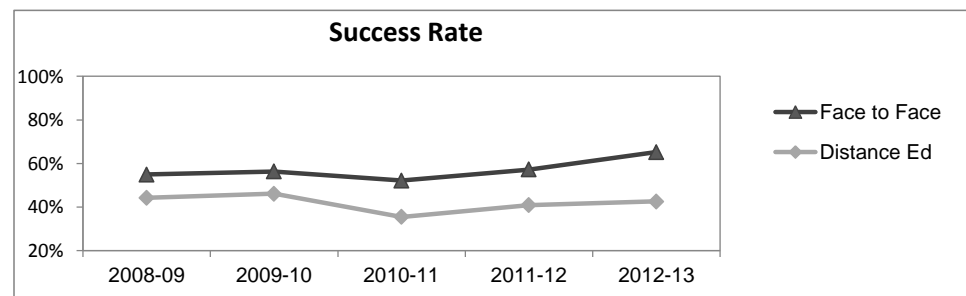
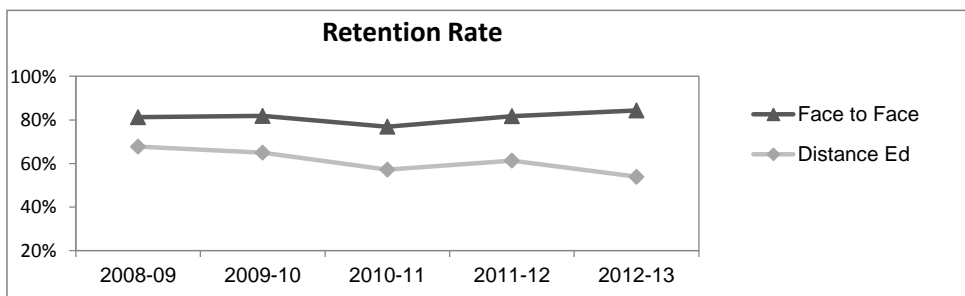
### Course Enrollments - Productivity

	2008-09			2009-10			2010-11			2011-12			2012-13			2012-13		
	F-t-F <sup>3</sup>	DE	Total	F-t-F <sup>3</sup>	DE	Total	F-t-F <sup>3</sup>	DE	Total	F-t-F <sup>3</sup>	DE	Total	Subject	DE	Total	Collegewide	DE	Total
Number of Sections	32	7	39	32	5	37	30	5	35	21	3	24	28	3	31	3,285	193	3,478
Enrollment <sup>4</sup>																		
Census	1,520	244	1,764	1,725	178	1,903	1,777	216	1,993	1,325	130	1,455	1,521	140	1,661	99,531	8,125	107,656
Students/Section <sup>5</sup>	48	35	45	54	36	51	59	43	57	63	43	61	54	47	54	30	42	31
Productivity																		
FTES <sup>6</sup>	161.3	22.7	184.1	182.6	16.8	199.4	187.5	20.1	207.6	140.1	12.1	152.2	158.6	13.1	171.7	11,680.8	901.0	12,581.8
FTEF <sup>6</sup>	7.4	1.4	8.8	7.4	1.0	8.4	7.4	1.0	8.4	5.4	0.6	6.0	6.6	0.6	7.2	667.0	37.4	704.4
Contract			30%			33%			36%			37%			28%			61%
Overload			18%			14%			10%			3%			8%			9%
Adjunct			32%			33%			35%			40%			50%			22%
Summer			20%			19%			20%			20%			14%			7%
FTES/FTEF <sup>7</sup>	21.8	16.2	20.9	24.7	16.8	23.7	25.3	20.1	24.7	25.9	20.2	25.4	24.0	21.9	23.9	17.5	24.1	17.9



### Outcomes

	2008-09			2009-10			2010-11			2011-12			2012-13			2012-13		
	F-t-F <sup>3</sup>	DE	Total	F-t-F <sup>3</sup>	DE	Total	F-t-F <sup>3</sup>	DE	Total	F-t-F <sup>3</sup>	DE	Total	Subject	DE	Total	Collegewide	DE	Total
Retention Rate <sup>8</sup>	81.3%	67.7%	79.3%	81.8%	65.0%	80.2%	76.9%	57.1%	74.8%	81.7%	61.3%	79.8%	84.3%	53.9%	81.7%	85.9%	76.0%	85.1%
Success Rate <sup>8</sup>	54.9%	44.2%	53.4%	56.3%	46.1%	55.4%	52.1%	35.5%	50.3%	57.2%	40.9%	55.7%	65.2%	42.6%	63.3%	69.1%	53.4%	67.9%



## Economics

## Degrees - Certificates

	2008-09			2009-10			2010-11			2011-12			2012-13			2012-13		
	AA	AS	CERT	AA	AS	CERT	AA	AS	CERT	AA	AS	CERT	Subject			Collegewide		
	AA	AS	CERT	AA	AS	CERT	AA	AS	CERT	AA	AS	CERT	AA	AS	CERT	AA	AS	CERT
Awards related to or contributed to by Social Science																		
Chicano Studies	2	0	0	2	0	0	4	0	0	1	0	0	3	0	0			
Economics	7	0	0	5	0	0	2	0	0	3	0	0	2	0	0			
History	16	0	0	16	0	0	28	0	0	20	0	0	17	0	0			
Political Science	6	0	0	5	0	0	5	0	0	5	0	0	9	0	0			
Political Sci-Domestic Policy	1	0	0	1	0	0	1	0	0	1	0	0	3	0	0			
Political Sci-Internl Relation	1	0	0	2	0	0	1	0	0	0	0	0	1	0	0			
<b>Total Awards by Type</b>	<b>33</b>	<b>0</b>	<b>0</b>	<b>31</b>	<b>0</b>	<b>0</b>	<b>41</b>	<b>0</b>	<b>0</b>	<b>30</b>	<b>0</b>	<b>0</b>	<b>35</b>	<b>0</b>	<b>0</b>	<b>534</b>	<b>260</b>	<b>969</b>
<b>% of total awards by type</b>	<b>100%</b>	<b>0%</b>	<b>0%</b>	<b>100%</b>	<b>0%</b>	<b>0%</b>	<b>100%</b>	<b>0%</b>	<b>0%</b>	<b>100%</b>	<b>0%</b>	<b>0%</b>	<b>100%</b>	<b>0%</b>	<b>0%</b>	<b>30%</b>	<b>15%</b>	<b>55%</b>
<b>Total Awards</b>	<b>33</b>			<b>31</b>			<b>41</b>			<b>30</b>			<b>35</b>			<b>1,763</b>		
Liberal Studies	86	0	0	86	0	0	79	0	0	78	0	0	91	0	0			
Liberal Arts/ Science	233	0	0	164	1	0	133	1	0	85	2	0	61	0	0			

**Notes**<sup>1</sup> Source: ODS Reports (July, 2013)<sup>2</sup> Student Headcount, *Unduplicated*: Number of students enrolled on census day, where each student is counted one time.<sup>3</sup> F-t-F: Face to Face instructional delivery mode.<sup>4</sup> Enrollment: Every course in which students are enrolled on census day.<sup>5</sup> Students/Section: Student enrollments per section on census day. Cross-listed sections are not combined.<sup>6</sup> Acronyms FTES and FTEF represent full-time equivalent students and full-time equivalent faculty, respectively.<sup>7</sup> FTES/FTEF: A measurement of productivity where the generally accepted target is 17.5.<sup>8</sup> Success rate numerator: Number of course enrollments with a successful passing grade (A,B,C,P/CR).

Retention rate numerator: Number of course enrollments retained through the semester (grade = A,B,C,P/CR,D,F,NP/NC,I).

Success and Retention rate denominator: Number of enrollments retained (A,B,C,P/CR,D,F,NP/NC,I), withdrawn (W), and dropped after Census Day (DR).