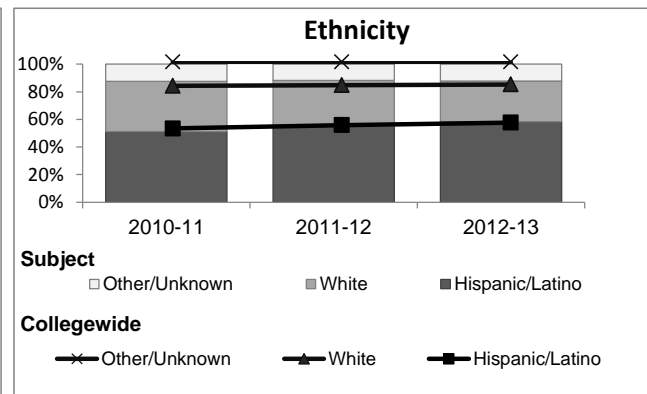
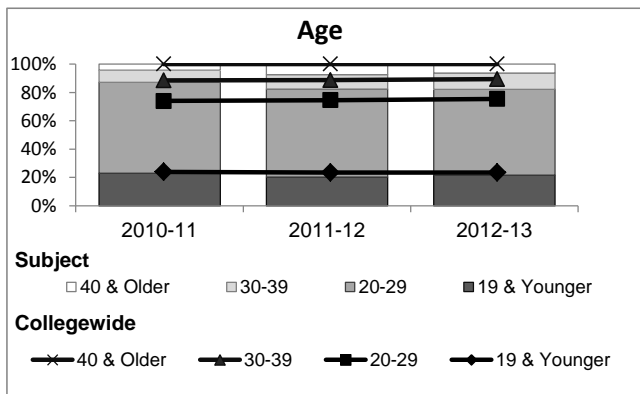
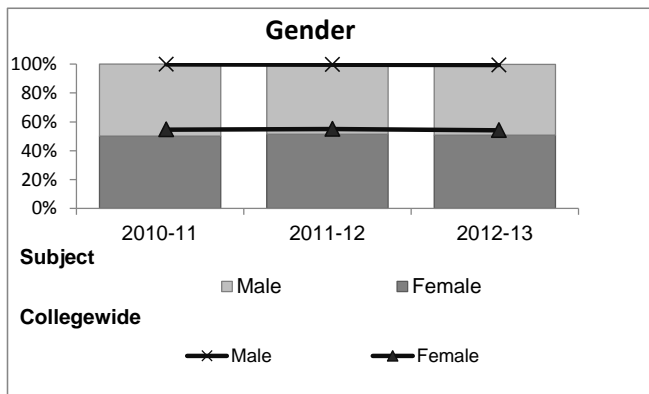


Geology

Student Demographic Information

Student Headcount	2008-09		2009-10		2010-11		2011-12		2012-13		2012-13	
	#	% change - Prior Yr	#	% change - Prior Yr	#	% change - Prior Yr	#	% change - Prior Yr	Subject		Collegewide	
									#	% change - Prior Yr	#	% change - Prior Yr
Unduplicated ²	662	--	684	3%	552	-19%	499	-10%	489	-2%	24,186	-4%

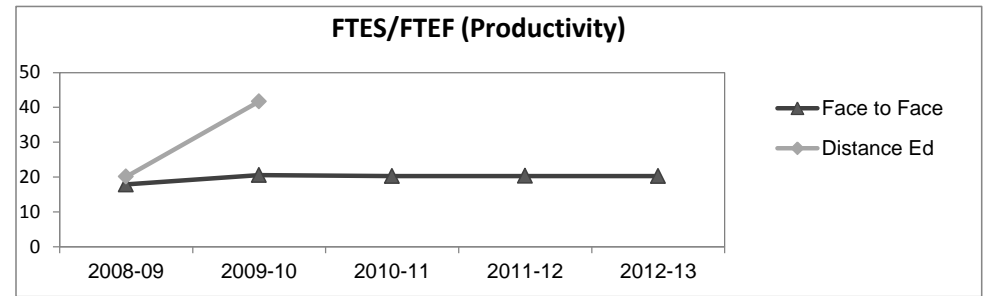
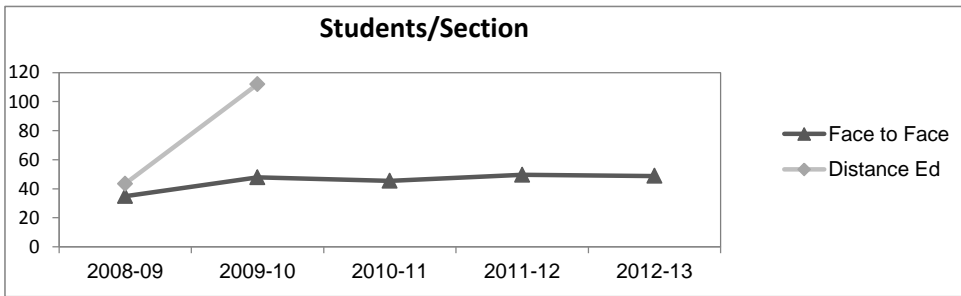
	2008-09		2009-10		2010-11		2011-12		2012-13		2012-13	
	#	%	#	%	#	%	#	%	Subject		Collegewide	
									#	%	#	%
Gender												
Female	391	59%	379	55%	277	50%	257	52%	248	51%	13,002	54%
Male	269	41%	303	44%	275	50%	240	48%	240	49%	11,007	46%
Unknown	2	0%	2	0%	0	0%	2	0%	1	0%	177	1%
Age												
19 & Younger	143	22%	174	25%	127	23%	101	20%	106	22%	5,879	24%
20-29	389	59%	397	58%	355	64%	311	62%	296	61%	12,407	51%
30-39	68	10%	76	11%	47	9%	50	10%	57	12%	3,344	14%
40 & Older	62	9%	37	5%	23	4%	37	7%	30	6%	2,555	11%
Ethnicity												
African American	32	5%	43	6%	22	4%	14	3%	19	4%	1,479	6%
American Indian	9	1%	7	1%	5	1%	5	1%	2	0%	148	1%
Asian/Filipino/Pac Islander	24	4%	31	5%	25	5%	21	4%	13	3%	1,180	5%
Hispanic/Latino	299	45%	309	45%	282	51%	274	55%	285	58%	13,518	56%
White	269	41%	272	40%	201	36%	167	33%	144	29%	6,706	28%
Two or more races	19	3%	15	2%	17	3%	18	4%	25	5%	802	3%
Unknown	10	2%	7	1%	0	0%	0	0%	1	0%	353	1%



Geology

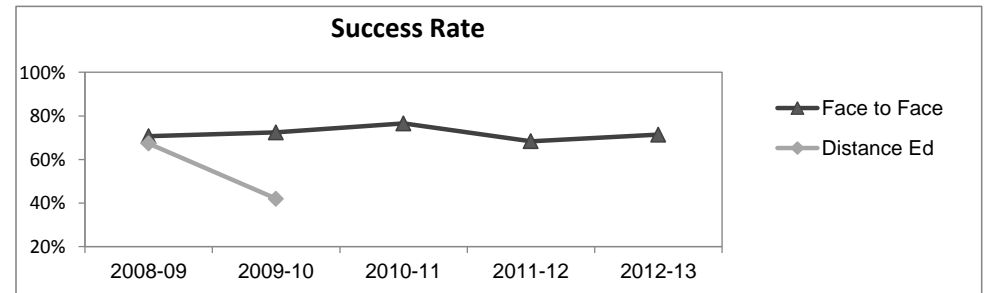
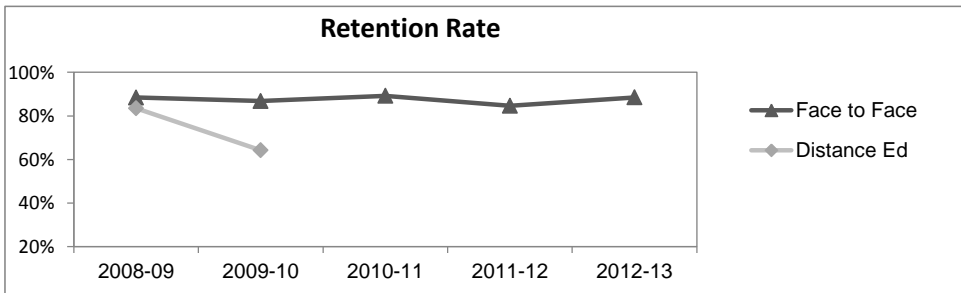
Course Enrollments - Productivity

	2008-09			2009-10			2010-11			2011-12			2012-13			2012-13		
	F-t-F ³	DE	Total	F-t-F ³	DE	Total	F-t-F ³	DE	Total	F-t-F ³	DE	Total	Subject	Subject	Subject	Collegewide	Collegewide	Collegewide
Number of Sections	19	6	25	15	2	17	17	0	17	14	0	14	15	0	15	3,285	193	3,478
Enrollment ⁴																		
Census	662	260	922	718	224	942	773	0	773	694	0	694	732	0	732	99,531	8,125	107,656
Students/Section ⁵	35	43	37	48	112	55	45		45	50		50	49		49	30	42	31
Productivity																		
FTES ⁶	67.3	24.1	91.4	76.1	20.9	97.0	81.1	0	81.1	73.2	0	73.2	77.2	0	77.2	11,680.8	901.0	12,581.8
FTEF ⁶	3.8	1.2	5.0	3.7	0.5	4.2	4.0	0	4.0	3.6	0	3.6	3.8	0	3.8	667.0	37.4	704.4
Contract			38%			48%			40%			22%			63%			61%
Overload			0%			0%			5%			6%			0%			9%
Adjunct			38%			43%			45%			61%			26%			22%
Summer			24%			10%			10%			11%			11%			7%
FTES/FTEF ⁷	17.9	20.1	18.4	20.6	41.7	23.1	20.3		20.3	20.3		20.3	20.3		20.3	17.5	24.1	17.9



Outcomes

	2008-09			2009-10			2010-11			2011-12			2012-13			2012-13		
	F-t-F ³	DE	Total	F-t-F ³	DE	Total	F-t-F ³	DE	Total	F-t-F ³	DE	Total	Subject	Subject	Subject	Collegewide	Collegewide	Collegewide
Retention Rate ⁸	88.4%	83.5%	87.1%	86.8%	64.3%	81.4%	89.2%		89.2%	84.7%		84.7%	88.5%		88.5%	85.9%	76.0%	85.1%
Success Rate ⁸	70.7%	67.3%	69.7%	72.5%	42.0%	65.2%	76.6%		76.6%	68.4%		68.4%	71.4%		71.4%	69.1%	53.4%	67.9%



Geology

Degrees - Certificates

	2008-09			2009-10			2010-11			2011-12			2012-13			2012-13		
	AA	AS	CERT	AA	AS	CERT	AA	AS	CERT	AA	AS	CERT	Subject			Collegewide		
	AA	AS	CERT	AA	AS	CERT	AA	AS	CERT	AA	AS	CERT	AA	AS	CERT	AA	AS	CERT
Awards related to or contributed to by Physical Science																		
Architectural CAD	0	0	1	0	0	12	0	0	13	0	0	9	0	0	10			
Architecture/Architri Drft	7	9	0	4	2	0	2	8	0	2	4	0	7	3	0			
Chemistry	0	0	0	0	0	0	0	2	0	0	1	0	0	0	0			
Engineering Tech. / Engineering	0	4	0	0	2	0	0	1	0	0	0	0	0	6	0			
Biological Sciences	0	85	0	0	66	0	0	71	0	0	64	0	0	53	0			
Physics	0	0	0	0	1	0	0	3	0	0	2	0	0	4	0			
Total Awards by Type	7	98	1	4	71	12	2	85	13	2	71	9	7	66	10	534	260	969
% of total awards by type	7%	92%	1%	5%	82%	14%	2%	85%	13%	2%	87%	11%	8%	80%	12%	30%	15%	55%
Total Awards	106			87			100			82			83			1,763		
All Allied Health Majors	0	173	122	1	186	106	0	141	213	1	158	227	0	119	194			
Liberal Studies	86	0	0	86	0	0	79	0	0	78	0	0	91	0	0			
Liberal Arts/ Science	233	0	0	164	1	0	133	1	0	85	2	0	61	0	0			

Notes¹ Source: ODS Reports (July, 2013)² Student Headcount, **Unduplicated**: Number of students enrolled on census day, where each student is counted one time.³ F-t-F: Face to Face instructional delivery mode.⁴ Enrollment: Every course in which students are enrolled on census day.⁵ Students/Section: Student enrollments per section on census day. Cross-listed sections are not combined.⁶ Acronyms FTES and FTEF represent full-time equivalent students and full-time equivalent faculty, respectively.⁷ FTES/FTEF: A measurement of productivity where the generally accepted target is 17.5.⁸ Success rate numerator: Number of course enrollments with a successful passing grade (A,B,C,P/CR).

Retention rate numerator: Number of course enrollments retained through the semester (grade = A,B,C,P/CR,D,F,NP/NC,I).

Success and Retention rate denominator: Number of enrollments retained (A,B,C,P/CR,D,F,NP/NC,I), withdrawn (W), and dropped after Census Day (DR).