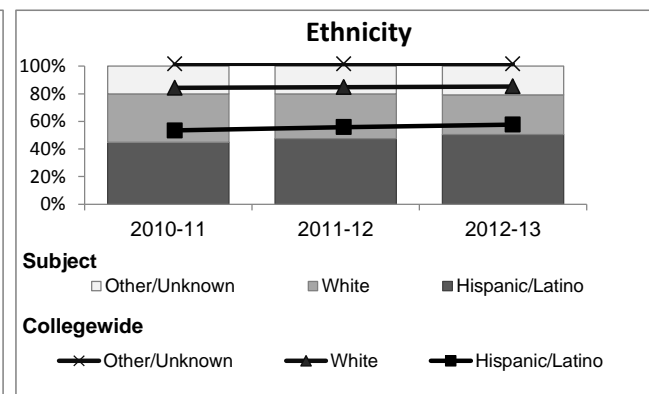
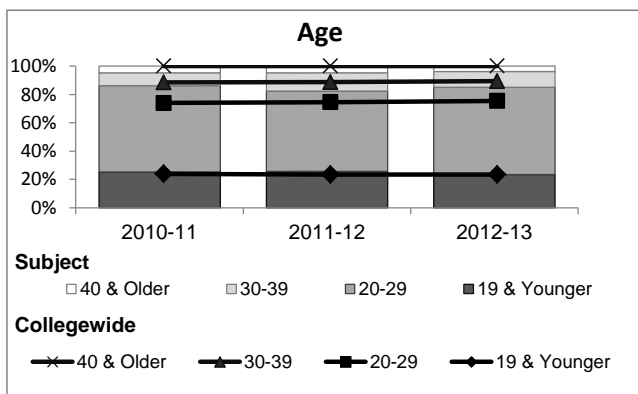
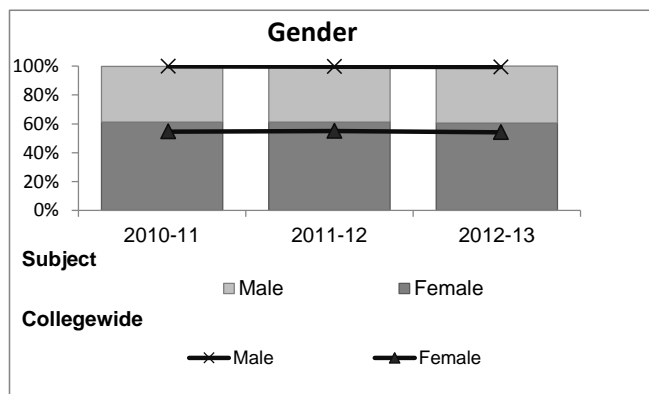


# Chemistry

## Student Demographic Information

Student Headcount	2008-09		2009-10		2010-11		2011-12		2012-13			
	#	% change - Prior Yr	#	% change - Prior Yr	#	% change - Prior Yr	#	% change - Prior Yr	Subject		Collegewide	
									#	% change - Prior Yr	#	% change - Prior Yr
Unduplicated <sup>2</sup>	843	--	792	-6%	792	0%	716	-10%	747	4%	24,186	-4%

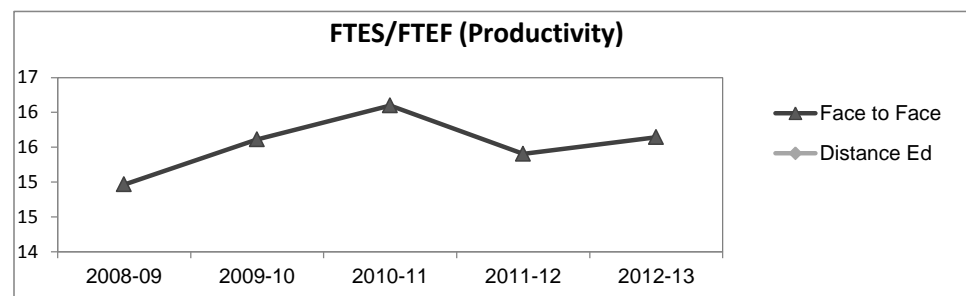
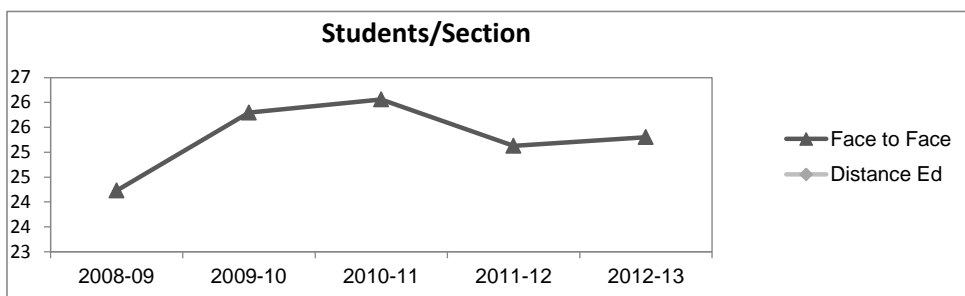
	2008-09		2009-10		2010-11		2011-12		2012-13			
	#	%	#	%	#	%	#	%	Subject		Collegewide	
									#	%	#	%
<b>Gender</b>												
Female	499	59%	486	61%	485	61%	438	61%	453	61%	13,002	54%
Male	339	40%	306	39%	306	39%	277	39%	294	39%	11,007	46%
Unknown	5	1%	0	0%	1	0%	1	0%	0	0%	177	1%
<b>Age</b>												
19 & Younger	263	31%	234	30%	200	25%	184	26%	176	24%	5,879	24%
20-29	453	54%	430	54%	483	61%	407	57%	461	62%	12,407	51%
30-39	86	10%	94	12%	73	9%	92	13%	82	11%	3,344	14%
40 & Older	41	5%	34	4%	36	5%	33	5%	28	4%	2,555	11%
<b>Ethnicity</b>												
African American	26	3%	36	5%	30	4%	21	3%	25	3%	1,479	6%
American Indian	7	1%	5	1%	3	0%	4	1%	1	0%	148	1%
Asian/Filipino/Pac Islander	123	15%	103	13%	95	12%	88	12%	99	13%	1,180	5%
Hispanic/Latino	341	40%	340	43%	356	45%	340	47%	377	50%	13,518	56%
White	306	36%	281	35%	277	35%	232	32%	214	29%	6,706	28%
Two or more races	27	3%	20	3%	31	4%	31	4%	31	4%	802	3%
Unknown	13	2%	7	1%	0	0%	0	0%	0	0%	353	1%



## Chemistry

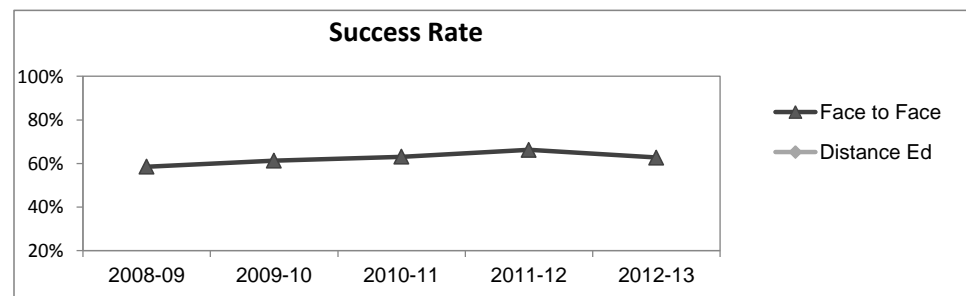
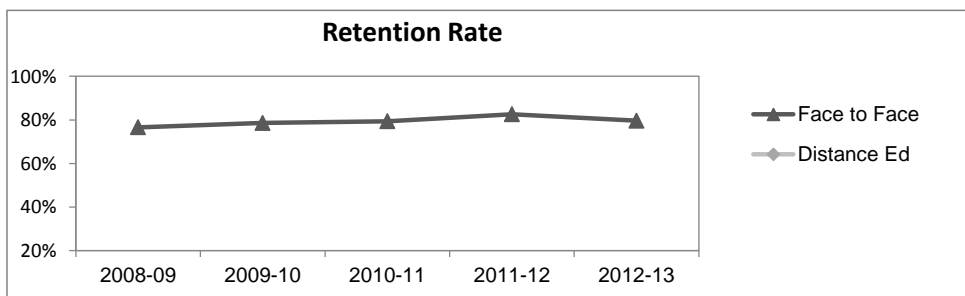
### Course Enrollments - Productivity

	2008-09			2009-10			2010-11			2011-12			2012-13			2012-13		
	F-t-F <sup>3</sup>	DE	Total	F-t-F <sup>3</sup>	DE	Total	F-t-F <sup>3</sup>	DE	Total	F-t-F <sup>3</sup>	DE	Total	Subject	Subject	Subject	Collegewide	Collegewide	Collegewide
Number of Sections	39	0	39	34	0	34	33	0	33	32	0	32	33	0	33	3,285	193	3,478
Enrollment <sup>4</sup>																		
Census	945	0	945	877	0	877	860	0	860	804	0	804	835	0	835	99,531	8,125	107,656
Students/Section <sup>5</sup>	24		24	26		26	26		26	25		25	25		25	30	42	31
Productivity																		
FTES <sup>6</sup>	257.4	0	257.4	240.3	0	240.3	236.1	0	236.1	225.4	0	225.4	217.9	0	217.9	11,680.8	901.0	12,581.8
FTEF <sup>6</sup>	17.2	0	17.2	15.4	0	15.4	14.7	0	14.7	14.6	0	14.6	13.9	0	13.9	667.0	37.4	704.4
Contract			62%			57%			68%			66%			62%			61%
Overload			7%			9%			8%			8%			9%			9%
Adjunct			19%			22%			16%			17%			18%			22%
Summer			12%			12%			8%			8%			11%			7%
FTES/FTEF <sup>7</sup>	15.0		15.0	15.6		15.6	16.1		16.1	15.4		15.4	15.6		15.6	17.5	24.1	17.9



### Outcomes

	2008-09			2009-10			2010-11			2011-12			2012-13			2012-13		
	F-t-F <sup>3</sup>	DE	Total	F-t-F <sup>3</sup>	DE	Total	F-t-F <sup>3</sup>	DE	Total	F-t-F <sup>3</sup>	DE	Total	Subject	Subject	Subject	Collegewide	Collegewide	Collegewide
Retention Rate <sup>8</sup>	76.6%		76.6%	78.6%		78.6%	79.4%		79.4%	82.6%		82.6%	79.7%		79.7%	85.9%	76.0%	85.1%
Success Rate <sup>8</sup>	58.5%		58.5%	61.3%		61.3%	63.1%		63.1%	66.2%		66.2%	62.7%		62.7%	69.1%	53.4%	67.9%



## Chemistry

## Degrees - Certificates

	2008-09			2009-10			2010-11			2011-12			2012-13			2012-13		
	AA	AS	CERT	AA	AS	CERT	AA	AS	CERT	AA	AS	CERT	Subject			Collegewide		
	AA	AS	CERT	AA	AS	CERT	AA	AS	CERT	AA	AS	CERT	AA	AS	CERT	AA	AS	CERT
Awards related to or contributed to by Physical Science																		
Architectural CAD	0	0	1	0	0	12	0	0	13	0	0	9	0	0	10			
Architecture/Architri Drft	7	9	0	4	2	0	2	8	0	2	4	0	7	3	0			
Chemistry	0	0	0	0	0	0	0	2	0	0	1	0	0	0	0			
Engineering Tech. / Engineering	0	4	0	0	2	0	0	1	0	0	0	0	0	6	0			
Biological Sciences	0	85	0	0	66	0	0	71	0	0	64	0	0	53	0			
Physics	0	0	0	0	1	0	0	3	0	0	2	0	0	4	0			
<b>Total Awards by Type</b>	<b>7</b>	<b>98</b>	<b>1</b>	<b>4</b>	<b>71</b>	<b>12</b>	<b>2</b>	<b>85</b>	<b>13</b>	<b>2</b>	<b>71</b>	<b>9</b>	<b>7</b>	<b>66</b>	<b>10</b>	<b>534</b>	<b>260</b>	<b>969</b>
<b>% of total awards by type</b>	<b>7%</b>	<b>92%</b>	<b>1%</b>	<b>5%</b>	<b>82%</b>	<b>14%</b>	<b>2%</b>	<b>85%</b>	<b>13%</b>	<b>2%</b>	<b>87%</b>	<b>11%</b>	<b>8%</b>	<b>80%</b>	<b>12%</b>	<b>30%</b>	<b>15%</b>	<b>55%</b>
<b>Total Awards</b>	<b>106</b>			<b>87</b>			<b>100</b>			<b>82</b>			<b>83</b>			<b>1,763</b>		
All Allied Health Majors	0	173	122	1	186	106	0	141	213	1	158	227	0	119	194			
Liberal Studies	86	0	0	86	0	0	79	0	0	78	0	0	91	0	0			
Liberal Arts/ Science	233	0	0	164	1	0	133	1	0	85	2	0	61	0	0			

**Notes**<sup>1</sup> Source: ODS Reports (July, 2013)<sup>2</sup> Student Headcount, **Unduplicated**: Number of students enrolled on census day, where each student is counted one time.<sup>3</sup> F-t-F: Face to Face instructional delivery mode.<sup>4</sup> Enrollment: Every course in which students are enrolled on census day.<sup>5</sup> Students/Section: Student enrollments per section on census day. Cross-listed sections are not combined.<sup>6</sup> Acronyms FTES and FTEF represent full-time equivalent students and full-time equivalent faculty, respectively.<sup>7</sup> FTES/FTEF: A measurement of productivity where the generally accepted target is 17.5.<sup>8</sup> Success rate numerator: Number of course enrollments with a successful passing grade (A,B,C,P/CR).

Retention rate numerator: Number of course enrollments retained through the semester (grade = A,B,C,P/CR,D,F,NP/NC,I).

Success and Retention rate denominator: Number of enrollments retained (A,B,C,P/CR,D,F,NP/NC,I), withdrawn (W), and dropped after Census Day (DR).