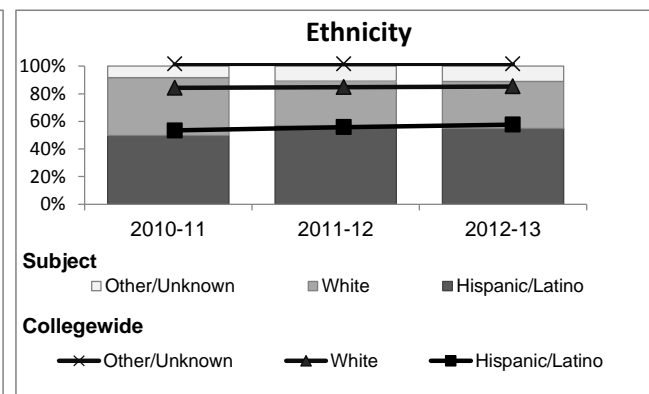
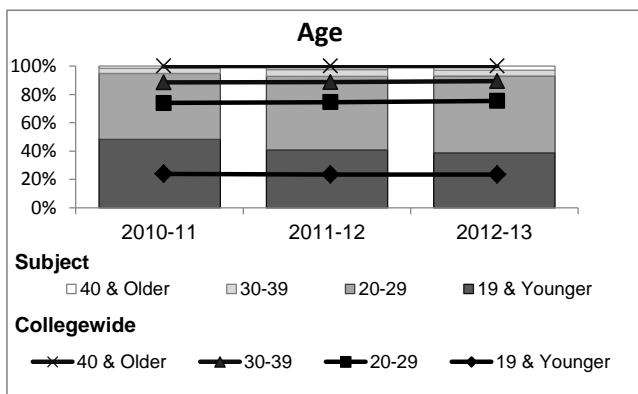
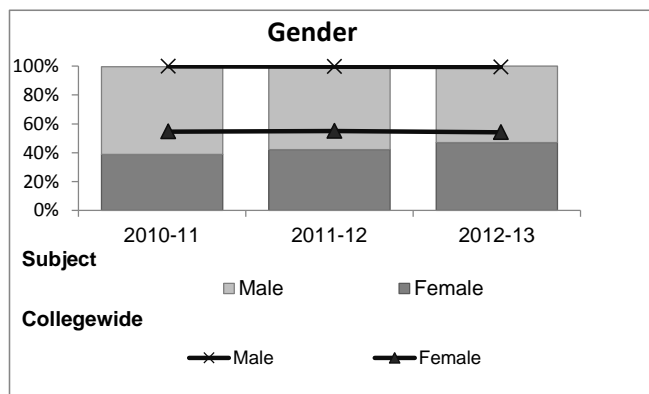


Astronomy

Student Demographic Information

Student Headcount	2008-09		2009-10		2010-11		2011-12		2012-13		2012-13	
	#	% change - Prior Yr	#	% change - Prior Yr	#	% change - Prior Yr	#	% change - Prior Yr	Subject		Collegewide	
									#	% change - Prior Yr	#	% change - Prior Yr
Unduplicated ²	251	--	271	8%	350	29%	337	-4%	244	-28%	24,186	-4%

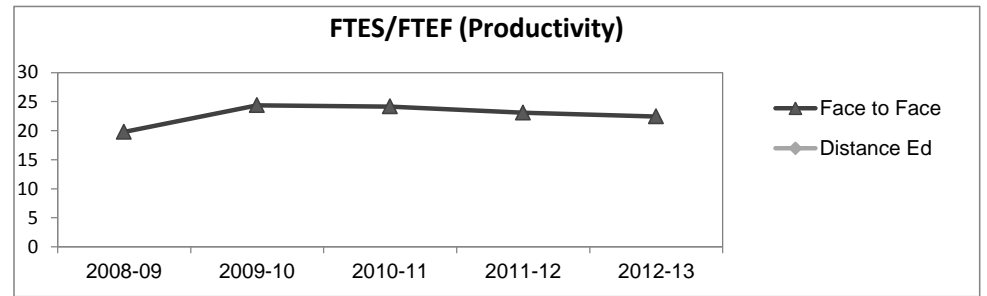
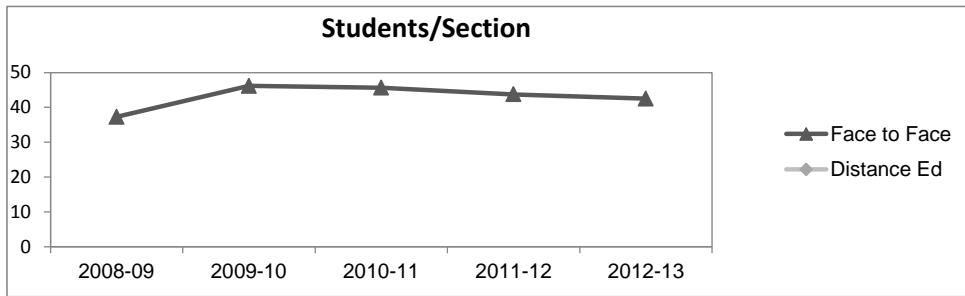
	2008-09		2009-10		2010-11		2011-12		2012-13		2012-13	
	#	%	#	%	#	%	#	%	Subject		Collegewide	
									#	%	#	%
Gender												
Female	105	42%	115	42%	136	39%	142	42%	115	47%	13,002	54%
Male	146	58%	155	57%	213	61%	192	57%	129	53%	11,007	46%
Unknown	0	0%	1	0%	1	0%	3	1%	0	0%	177	1%
Age												
19 & Younger	141	56%	148	55%	169	48%	138	41%	95	39%	5,879	24%
20-29	101	40%	104	38%	163	47%	175	52%	132	54%	12,407	51%
30-39	5	2%	16	6%	13	4%	16	5%	10	4%	3,344	14%
40 & Older	4	2%	3	1%	5	1%	8	2%	7	3%	2,555	11%
Ethnicity												
African American	6	2%	5	2%	7	2%	7	2%	6	2%	1,479	6%
American Indian	3	1%	3	1%	2	1%	1	0%	3	1%	148	1%
Asian/Filipino/Pac Islander	6	2%	7	3%	9	3%	10	3%	6	2%	1,180	5%
Hispanic/Latino	116	46%	124	46%	174	50%	192	57%	134	55%	13,518	56%
White	104	41%	123	45%	147	42%	109	32%	83	34%	6,706	28%
Two or more races	8	3%	7	3%	8	2%	18	5%	11	5%	802	3%
Unknown	8	3%	2	1%	3	1%	0	0%	1	0%	353	1%



Astronomy

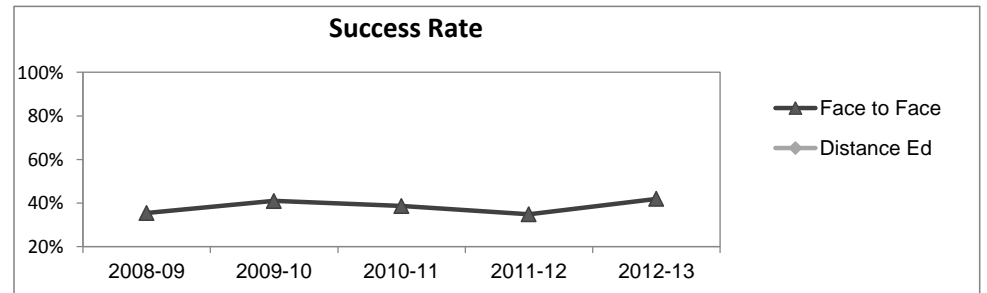
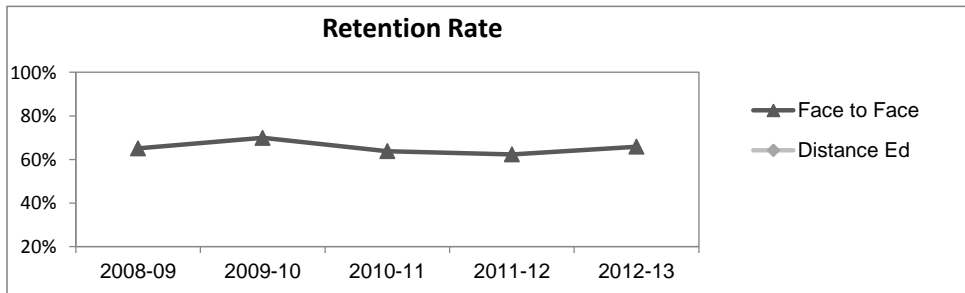
Course Enrollments - Productivity

	2008-09			2009-10			2010-11			2011-12			2012-13			2012-13		
	F-t-F ³	DE	Total	F-t-F ³	DE	Total	F-t-F ³	DE	Total	F-t-F ³	DE	Total	Subject	Subject	Subject	Collegewide	Collegewide	Collegewide
Number of Sections	7	0	7	6	0	6	8	0	8	8	0	8	6	0	6	3,285	193	3,478
Enrollment ⁴																		
Census	261	0	261	277	0	277	365	0	365	350	0	350	255	0	255	99,531	8,125	107,656
Students/Section ⁵	37		37	46		46	46		46	44		44	43		43	30	42	31
Productivity																		
FTES ⁶	27.7	0	27.7	29.2	0	29.2	38.6	0	38.6	36.9	0	36.9	26.9	0	26.9	11,680.8	901.0	12,581.8
FTEF ⁶	1.4	0	1.4	1.2	0	1.2	1.6	0	1.6	1.6	0	1.6	1.2	0	1.2	667.0	37.4	704.4
Contract			86%			100%			100%			100%			100%			61%
Overload			14%			0%			0%			0%			0%			9%
Adjunct			0%			0%			0%			0%			0%			22%
Summer			0%			0%			0%			0%			0%			7%
FTES/FTEF ⁷	19.8		19.8	24.4		24.4	24.1		24.1	23.1		23.1	22.4		22.4	17.5	24.1	17.9



Outcomes

	2008-09			2009-10			2010-11			2011-12			2012-13			2012-13		
	F-t-F ³	DE	Total	F-t-F ³	DE	Total	F-t-F ³	DE	Total	F-t-F ³	DE	Total	Subject	Subject	Subject	Collegewide	Collegewide	Collegewide
Retention Rate ⁸	65.0%		65.0%	69.9%		69.9%	63.8%		63.8%	62.3%		62.3%	65.9%		65.9%	85.9%	76.0%	85.1%
Success Rate ⁸	35.4%		35.4%	40.9%		40.9%	38.6%		38.6%	34.9%		34.9%	42.0%		42.0%	69.1%	53.4%	67.9%



Astronomy

Degrees - Certificates

	2008-09			2009-10			2010-11			2011-12			2012-13			2012-13		
	AA	AS	CERT	AA	AS	CERT	AA	AS	CERT	AA	AS	CERT	Subject			Collegewide		
	AA	AS	CERT	AA	AS	CERT	AA	AS	CERT	AA	AS	CERT	AA	AS	CERT	AA	AS	CERT
Awards related to or contributed to by Physical Science																		
Architectural CAD	0	0	1	0	0	12	0	0	13	0	0	9	0	0	10			
Architecture/Architri Drft	7	9	0	4	2	0	2	8	0	2	4	0	7	3	0			
Chemistry	0	0	0	0	0	0	0	2	0	0	1	0	0	0	0			
Engineering Tech. / Engineering	0	4	0	0	2	0	0	1	0	0	0	0	0	6	0			
Biological Sciences	0	85	0	0	66	0	0	71	0	0	64	0	0	53	0			
Physics	0	0	0	0	1	0	0	3	0	0	2	0	0	4	0			
Total Awards by Type	7	98	1	4	71	12	2	85	13	2	71	9	7	66	10	534	260	969
% of total awards by type	7%	92%	1%	5%	82%	14%	2%	85%	13%	2%	87%	11%	8%	80%	12%	30%	15%	55%
Total Awards	106			87			100			82			83			1,763		
All Allied Health Majors	0	173	122	1	186	106	0	141	213	1	158	227	0	119	194			
Liberal Studies	86	0	0	86	0	0	79	0	0	78	0	0	91	0	0			
Liberal Arts/ Science	233	0	0	164	1	0	133	1	0	85	2	0	61	0	0			

Notes

¹ **Source:** ODS Reports (July, 2013)

² **Student Headcount, Unduplicated:** Number of students enrolled on census day, where each student is counted one time.

³ **F-t-F:** Face to Face instructional delivery mode.

⁴ **Enrollment:** Every course in which students are enrolled on census day.

⁵ **Students/Section:** Student enrollments per section on census day. Cross-listed sections are not combined.

⁶ Acronyms **FTES** and **FTEF** represent full-time equivalent students and full-time equivalent faculty, respectively.

⁷ **FTES/FTEF:** A measurement of productivity where the generally accepted target is 17.5.

⁸ **Success rate numerator:** Number of course enrollments with a successful passing grade (A,B,C,P/CR).

Retention rate numerator: Number of course enrollments retained through the semester (grade = A,B,C,P/CR,D,F,NP/NC,I).

Success and Retention rate denominator: Number of enrollments retained (A,B,C,P/CR,D,F,NP/NC,I), withdrawn (W), and dropped after Census Day (DR).