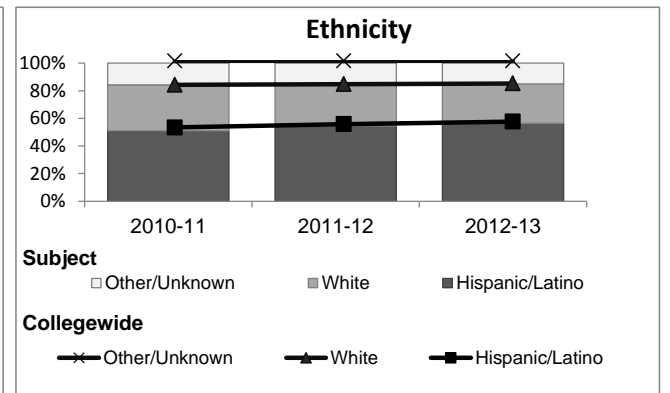
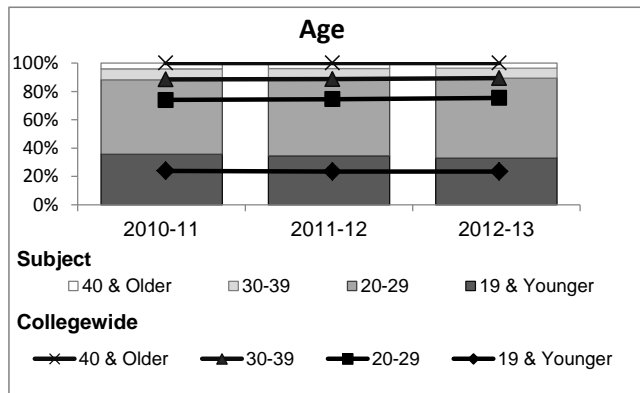
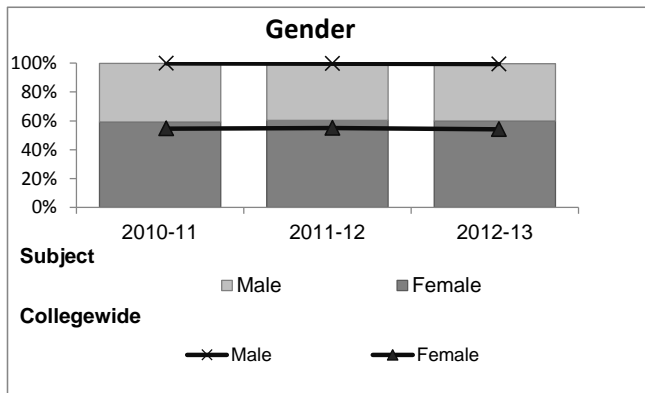


Philosophy

Student Demographic Information

Student Headcount	2008-09		2009-10		2010-11		2011-12		2012-13		2012-13	
	#	% change - Prior Yr	#	% change - Prior Yr	#	% change - Prior Yr	#	% change - Prior Yr	Subject		Collegewide	
									#	% change - Prior Yr	#	% change - Prior Yr
Unduplicated ²	2,924	--	2,905	-1%	3,204	10%	2,635	-18%	3,007	14%	24,186	-4%

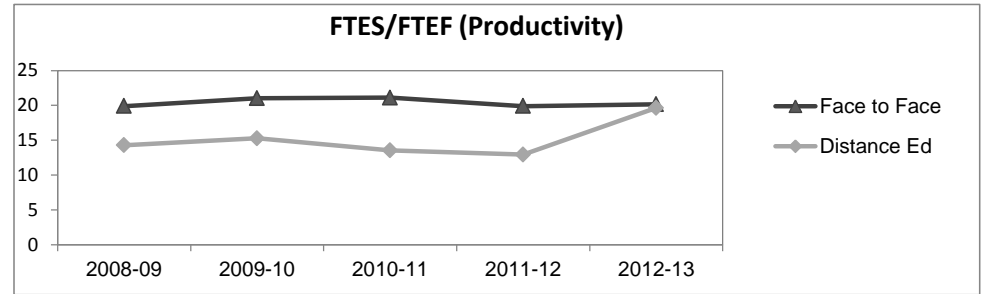
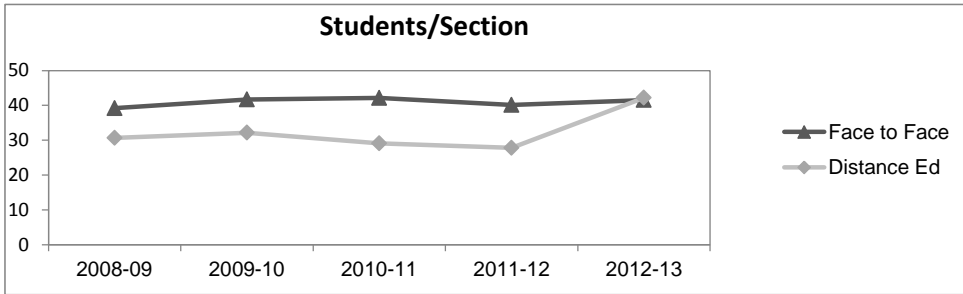
	2008-09		2009-10		2010-11		2011-12		2012-13		2012-13	
	#	%	#	%	#	%	#	%	Subject		Collegewide	
									#	%	#	%
Gender												
Female	1,707	58%	1,753	60%	1,895	59%	1,590	60%	1,799	60%	13,002	54%
Male	1,215	42%	1,148	40%	1,301	41%	1,040	39%	1,199	40%	11,007	46%
Unknown	2	0%	4	0%	8	0%	5	0%	9	0%	177	1%
Age												
19 & Younger	1,043	36%	1,069	37%	1,146	36%	912	35%	993	33%	5,879	24%
20-29	1,520	52%	1,472	51%	1,683	53%	1,420	54%	1,701	57%	12,407	51%
30-39	232	8%	237	8%	249	8%	207	8%	210	7%	3,344	14%
40 & Older	129	4%	127	4%	126	4%	96	4%	103	3%	2,555	11%
Ethnicity												
African American	161	6%	139	5%	144	4%	110	4%	103	3%	1,479	6%
American Indian	20	1%	26	1%	25	1%	17	1%	14	0%	148	1%
Asian/Filipino/Pac Islander	251	9%	192	7%	214	7%	178	7%	194	6%	1,180	5%
Hispanic/Latino	1,300	44%	1,447	50%	1,631	51%	1,436	54%	1,700	57%	13,518	56%
White	1,056	36%	1,000	34%	1,072	33%	795	30%	855	28%	6,706	28%
Two or more races	75	3%	77	3%	114	4%	97	4%	137	5%	802	3%
Unknown	61	2%	24	1%	4	0%	2	0%	4	0%	353	1%



Philosophy

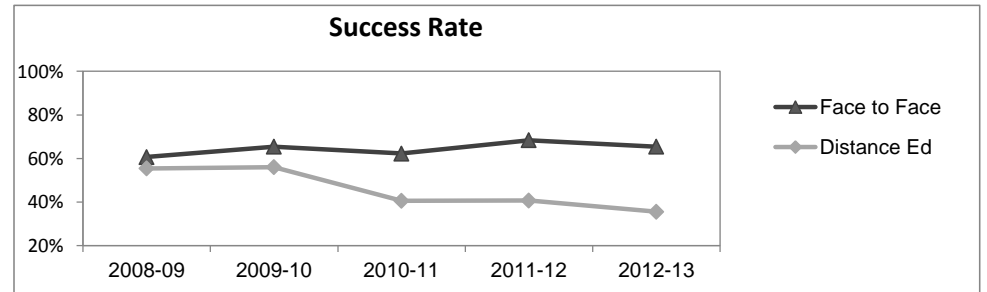
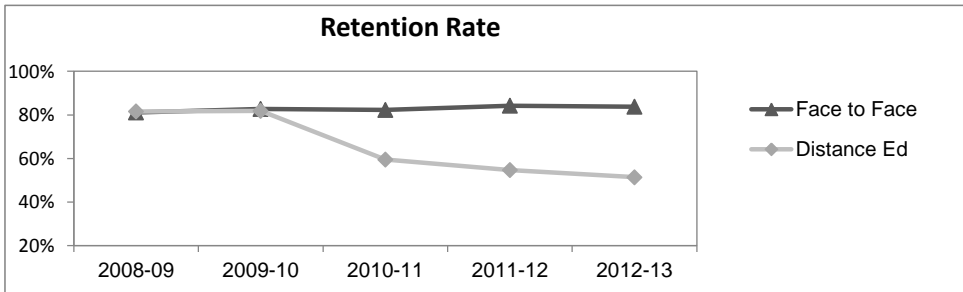
Course Enrollments - Productivity

	2008-09			2009-10			2010-11			2011-12			2012-13			2012-13		
	F-t-F ³	DE	Total	F-t-F ³	DE	Total	F-t-F ³	DE	Total	F-t-F ³	DE	Total	Subject	Subject	Subject	Collegewide	Collegewide	Collegewide
Number of Sections	81	6	87	73	7	80	78	10	88	66	10	76	75	6	81	3,285	193	3,478
Enrollment ⁴																		
Census	3,175	184	3,359	3,043	225	3,268	3,288	291	3,579	2,647	278	2,925	3,116	253	3,369	99,531	8,125	107,656
Students/Section ⁵	39	31	39	42	32	41	42	29	41	40	28	38	42	42	42	30	42	31
Productivity																		
FTES ⁶	339.6	17.1	356.7	329.3	21.4	350.6	351.9	27.1	379.0	283.9	25.9	309.7	334.8	23.6	358.4	11,680.8	901.0	12,581.8
FTEF ⁶	17.1	1.2	18.3	15.7	1.4	17.1	16.7	2.0	18.7	14.3	2.0	16.3	16.6	1.2	17.8	667.0	37.4	704.4
Contract			61%			62%			75%			86%			79%			61%
Overload			4%			11%			12%			3%			10%			9%
Adjunct			25%			18%			8%			7%			7%			22%
Summer			10%			8%			5%			4%			4%			7%
FTES/FTEF ⁷	19.9	14.3	19.5	21.0	15.3	20.5	21.1	13.6	20.3	19.9	12.9	19.0	20.2	19.6	20.1	17.5	24.1	17.9



Outcomes

	2008-09			2009-10			2010-11			2011-12			2012-13			2012-13		
	F-t-F ³	DE	Total	F-t-F ³	DE	Total	F-t-F ³	DE	Total	F-t-F ³	DE	Total	Subject	Subject	Subject	Collegewide	Collegewide	Collegewide
Retention Rate ⁸	81.1%	81.5%	81.1%	82.7%	81.8%	82.7%	82.2%	59.5%	80.4%	84.2%	54.7%	81.4%	83.8%	51.4%	81.3%	85.9%	76.0%	85.1%
Success Rate ⁸	60.6%	55.4%	60.3%	65.4%	56.0%	64.8%	62.2%	40.5%	60.5%	68.3%	40.6%	65.7%	65.4%	35.6%	63.2%	69.1%	53.4%	67.9%



Philosophy

Degrees - Certificates

	2008-09			2009-10			2010-11			2011-12			2012-13			2012-13		
	AA	AS	CERT	AA	AS	CERT	AA	AS	CERT	AA	AS	CERT	Subject			Collegewide		
	AA	AS	CERT	AA	AS	CERT	AA	AS	CERT	AA	AS	CERT	AA	AS	CERT	AA	AS	CERT
Awards related to or contributed to by Philosophy																		
Philosophy	1	0	0	3	0	0	4	0	0	5	0	0	4	0	0			
Total Awards by Type	1	0	0	3	0	0	4	0	0	5	0	0	4	0	0	534	260	969
% of total awards by type	100%	0%	0%	100%	0%	0%	100%	0%	0%	100%	0%	0%	100%	0%	0%	30%	15%	55%
Total Awards	1			3			4			5			4			1,763		
Social & Behavioral Sciences	113	19	14	136	19	7	180	12	8	145	13	11	165	3	10			
Liberal Studies	86	0	0	86	0	0	79	0	0	78	0	0	91	0	0			
Liberal Arts/ Science	233	0	0	164	1	0	133	1	0	85	2	0	61	0	0			

Notes¹ **Source:** ODS Reports (July, 2013)² **Student Headcount, Unduplicated:** Number of students enrolled on census day, where each student is counted one time.³ **F-t-F:** Face to Face instructional delivery mode.⁴ **Enrollment:** Every course in which students are enrolled on census day.⁵ **Students/Section:** Student enrollments per section on census day. Cross-listed sections are not combined.⁶ Acronyms **FTES** and **FTEF** represent full-time equivalent students and full-time equivalent faculty, respectively.⁷ **FTES/FTEF:** A measurement of productivity where the generally accepted target is 17.5.⁸ **Success rate numerator:** Number of course enrollments with a successful passing grade (A,B,C,P/CR).**Retention rate numerator:** Number of course enrollments retained through the semester (grade = A,B,C,P/CR,D,F,NP/NC,I).**Success and Retention rate denominator:** Number of enrollments retained (A,B,C,P/CR,D,F,NP/NC,I), withdrawn (W), and dropped after Census Day (DR).