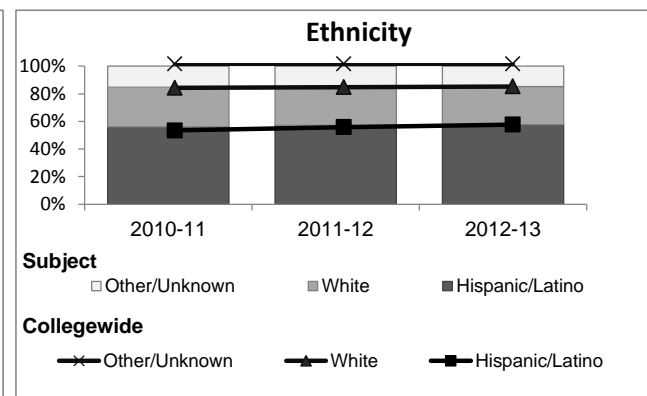
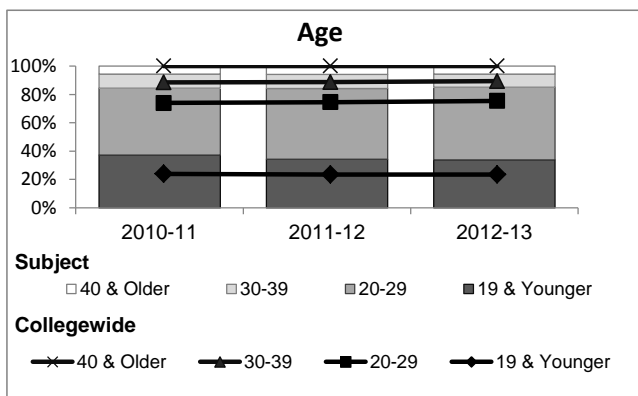
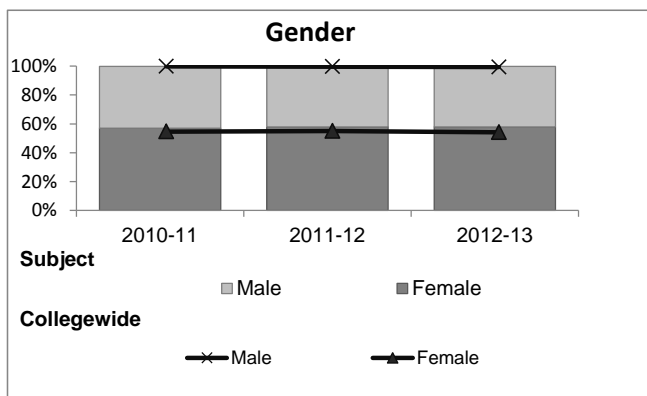


Mathematics

Student Demographic Information

Student Headcount	2008-09		2009-10		2010-11		2011-12		2012-13			
	#	% change - Prior Yr	#	% change - Prior Yr	#	% change - Prior Yr	#	% change - Prior Yr	Subject		Collegewide	
									#	% change - Prior Yr	#	% change - Prior Yr
Unduplicated ²	8,281	--	7,302	-12%	7,542	3%	6,529	-13%	6,608	1%	24,186	-4%

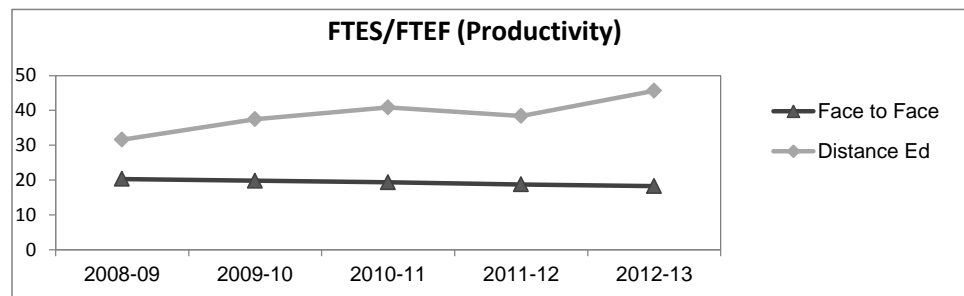
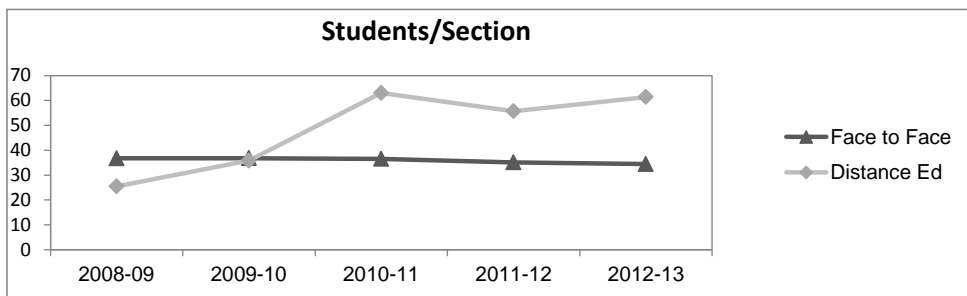
	2008-09		2009-10		2010-11		2011-12		2012-13			
	#	%	#	%	#	%	#	%	Subject		Collegewide	
									#	%	#	%
Gender												
Female	4,841	58%	4,110	56%	4,293	57%	3,788	58%	3,824	58%	13,002	54%
Male	3,425	41%	3,180	44%	3,232	43%	2,720	42%	2,770	42%	11,007	46%
Unknown	15	0%	12	0%	17	0%	21	0%	14	0%	177	1%
Age												
19 & Younger	3,349	40%	2,965	41%	2,806	37%	2,236	34%	2,240	34%	5,879	24%
20-29	3,599	43%	3,236	44%	3,573	47%	3,268	50%	3,390	51%	12,407	51%
30-39	804	10%	696	10%	748	10%	650	10%	617	9%	3,344	14%
40 & Older	529	6%	405	6%	415	6%	375	6%	361	5%	2,555	11%
Ethnicity												
African American	500	6%	401	5%	405	5%	365	6%	283	4%	1,479	6%
American Indian	81	1%	54	1%	59	1%	47	1%	33	0%	148	1%
Asian/Filipino/Pac Islander	505	6%	494	7%	448	6%	352	5%	384	6%	1,180	5%
Hispanic/Latino	4,157	50%	3,786	52%	4,223	56%	3,740	57%	3,813	58%	13,518	56%
White	2,738	33%	2,320	32%	2,173	29%	1,800	28%	1,820	28%	6,706	28%
Two or more races	154	2%	172	2%	223	3%	219	3%	267	4%	802	3%
Unknown	146	2%	75	1%	11	0%	6	0%	8	0%	353	1%



Mathematics

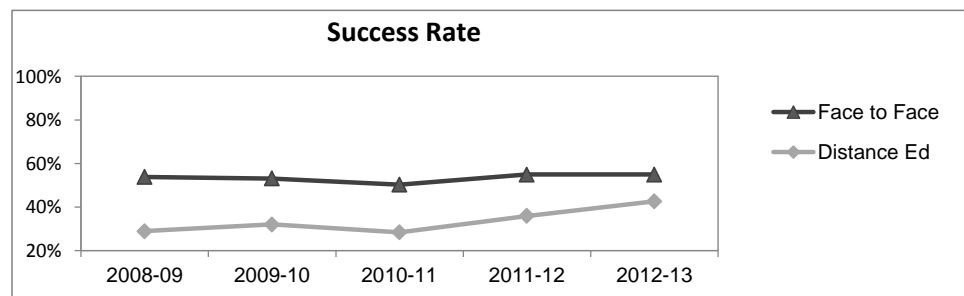
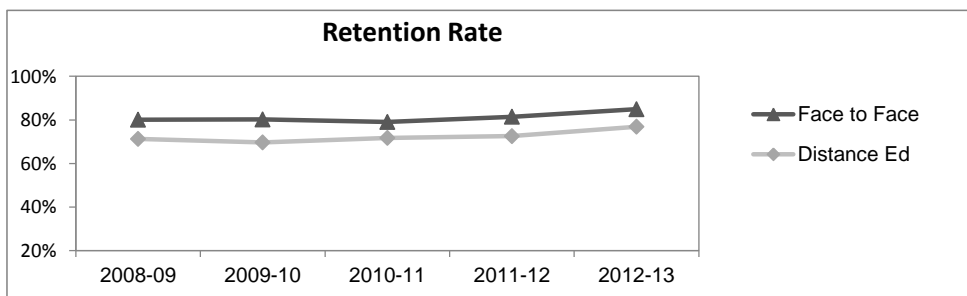
Course Enrollments - Productivity

	2008-09			2009-10			2010-11			2011-12			2012-13			2012-13		
	F-t-F ³	DE	Total	F-t-F ³	DE	Total	F-t-F ³	DE	Total	F-t-F ³	DE	Total	Subject	Subject	Subject	Collegewide	Collegewide	Collegewide
Number of Sections	197	134	331	190	61	251	204	32	236	184	34	218	193	34	227	3,285	193	3,478
Enrollment ⁴																		
Census	7,235	3,416	10,651	6,985	2,185	9,170	7,454	2,017	9,471	6,458	1,892	8,350	6,645	2,086	8,731	99,531	8,125	107,656
Students/Section ⁵	37	25	32	37	36	37	37	63	40	35	56	38	34	61	38	30	42	31
Productivity																		
FTES ⁶	1,189.2	524.6	1,713.7	1,146.0	336.7	1,482.7	1,204.4	296.5	1,500.9	1,041.9	278.6	1,320.5	1,070.5	306.8	1,377.3	11,680.8	901.0	12,581.8
FTEF ⁶	58.5	16.6	75.1	57.9	9.0	66.9	62.2	7.3	69.4	55.5	7.3	62.8	58.6	6.7	65.3	667.0	37.4	704.4
Contract			62%			71%			75%			74%			70%			61%
Overload			7%			5%			4%			7%			10%			9%
Adjunct			17%			11%			13%			13%			13%			22%
Summer			15%			13%			7%			7%			7%			7%
FTES/FTEF ⁷	20.3	31.6	22.8	19.8	37.5	22.2	19.4	40.8	21.6	18.8	38.4	21.0	18.3	45.6	21.1	17.5	24.1	17.9



Outcomes

	2008-09			2009-10			2010-11			2011-12			2012-13			2012-13		
	F-t-F ³	DE	Total	F-t-F ³	DE	Total	F-t-F ³	DE	Total	F-t-F ³	DE	Total	Subject	Subject	Subject	Collegewide	Collegewide	Collegewide
Retention Rate ⁸	80.1%	71.3%	77.4%	80.2%	69.6%	77.6%	79.1%	71.8%	77.5%	81.4%	72.6%	79.4%	84.9%	76.8%	83.0%	85.9%	76.0%	85.1%
Success Rate ⁸	53.8%	28.9%	46.0%	53.1%	32.0%	48.0%	50.3%	28.4%	45.5%	54.9%	35.9%	50.5%	54.9%	42.6%	52.0%	69.1%	53.4%	67.9%



Mathematics

Degrees - Certificates

	2008-09			2009-10			2010-11			2011-12			2012-13			2012-13		
	AA	AS	CERT	AA	AS	CERT	AA	AS	CERT	AA	AS	CERT	Subject			Collegewide		
	AA	AS	CERT	AA	AS	CERT	AA	AS	CERT	AA	AS	CERT	AA	AS	CERT	AA	AS	CERT
Awards related to or contributed to by Math																		
Mathematics	4	0	0	8	0	0	6	0	0	4	0	0	3	0	0			
Total Awards by Type	4	0	0	8	0	0	6	0	0	4	0	0	3	0	0	534	260	969
% of total awards by type	100%	0%	0%	100%	0%	0%	100%	0%	0%	100%	0%	0%	100%	0%	0%	30%	15%	55%
Total Awards	4			8			6			4			3			1,763		
All Allied Health Majors	0	173	122	1	186	106	0	141	213	1	158	227	0	119	194			
Business	97	0	138	90	0	160	97	0	47	102	0	53	104	0	82			
Social & Behavioral Sciences	113	19	14	136	19	7	180	12	8	145	13	11	165	3	10			
Liberal Studies	86	0	0	86	0	0	79	0	0	78	0	0	91	0	0			
Liberal Arts/ Science	233	0	0	164	1	0	133	1	0	85	2	0	61	0	0			

Notes¹ Source: ODS Reports (July, 2013)² Student Headcount, **Unduplicated**: Number of students enrolled on census day, where each student is counted one time.³ F-t-F: Face to Face instructional delivery mode.⁴ Enrollment: Every course in which students are enrolled on census day.⁵ Students/Section: Student enrollments per section on census day. Cross-listed sections are not combined.⁶ Acronyms FTES and FTEF represent full-time equivalent students and full-time equivalent faculty, respectively.⁷ FTES/FTEF: A measurement of productivity where the generally accepted target is 17.5.⁸ Success rate numerator: Number of course enrollments with a successful passing grade (A,B,C,P/CR).

Retention rate numerator: Number of course enrollments retained through the semester (grade = A,B,C,P/CR,D,F,NP/NC,I).

Success and Retention rate denominator: Number of enrollments retained (A,B,C,P/CR,D,F,NP/NC,I), withdrawn (W), and dropped after Census Day (DR).