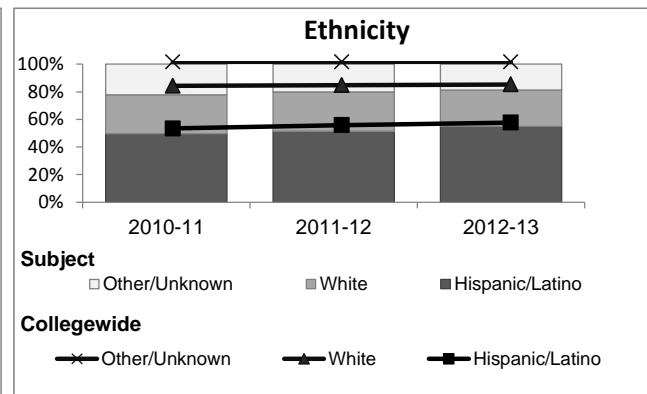
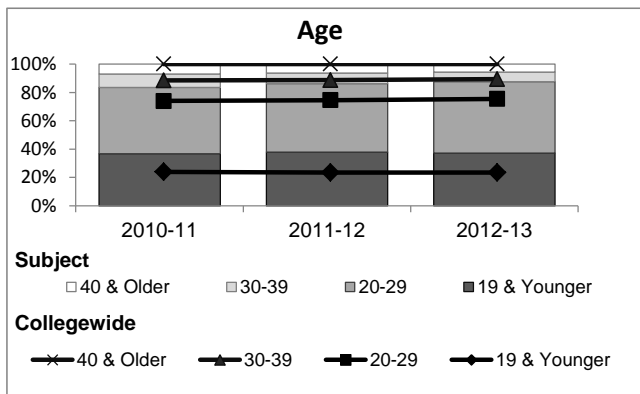
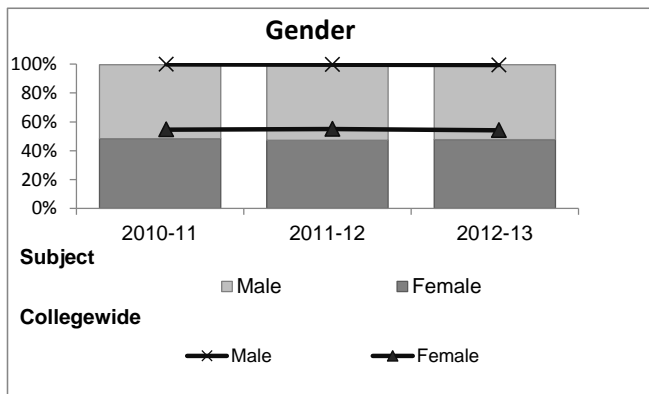


Physical Education

Student Demographic Information

Student Headcount	2008-09		2009-10		2010-11		2011-12		2012-13		2012-13	
	Subject		Collegewide		Subject		Collegewide		Subject		Collegewide	
	#	% change - Prior Yr	#	% change - Prior Yr	#	% change - Prior Yr	#	% change - Prior Yr	#	% change - Prior Yr	#	% change - Prior Yr
Unduplicated ²	3,860	--	3,762	-3%	3,655	-3%	2,448	-33%	2,320	-5%	24,186	-4%

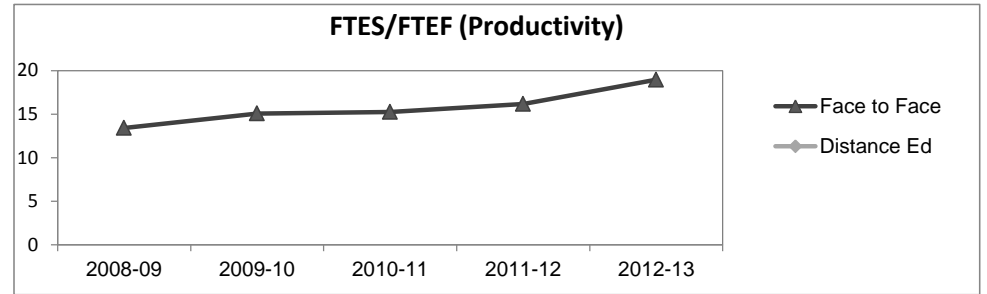
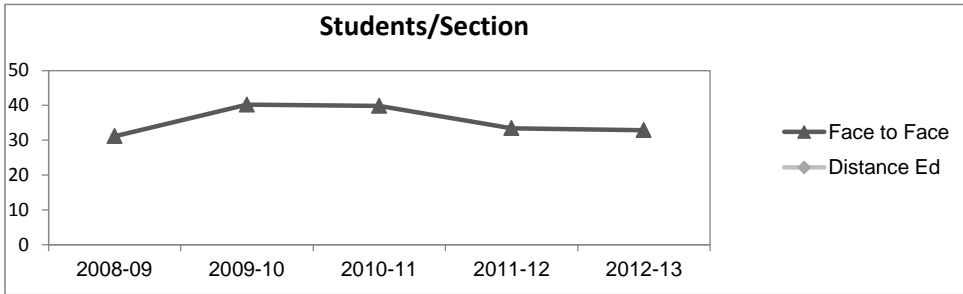
	2008-09		2009-10		2010-11		2011-12		2012-13		2012-13	
	#	%	#	%	#	%	#	%	#	%	#	%
	Gender											
Female	1,935	50%	1,775	47%	1,769	48%	1,155	47%	1,105	48%	13,002	54%
Male	1,915	50%	1,982	53%	1,873	51%	1,285	52%	1,207	52%	11,007	46%
Unknown	10	0%	5	0%	13	0%	8	0%	8	0%	177	1%
Age												
19 & Younger	1,682	44%	1,505	40%	1,344	37%	931	38%	863	37%	5,879	24%
20-29	1,645	43%	1,698	45%	1,713	47%	1,181	48%	1,169	50%	12,407	51%
30-39	255	7%	303	8%	342	9%	181	7%	158	7%	3,344	14%
40 & Older	278	7%	256	7%	256	7%	155	6%	130	6%	2,555	11%
Ethnicity												
African American	456	12%	468	12%	488	13%	274	11%	218	9%	1,479	6%
American Indian	45	1%	42	1%	35	1%	21	1%	10	0%	148	1%
Asian/Filipino/Pac Islander	205	5%	158	4%	151	4%	93	4%	91	4%	1,180	5%
Hispanic/Latino	1,841	48%	1,868	50%	1,807	49%	1,261	52%	1,274	55%	13,518	56%
White	1,172	30%	1,068	28%	1,039	28%	693	28%	615	27%	6,706	28%
Two or more races	61	2%	101	3%	127	3%	104	4%	106	5%	802	3%
Unknown	80	2%	57	2%	8	0%	2	0%	6	0%	353	1%



Physical Education

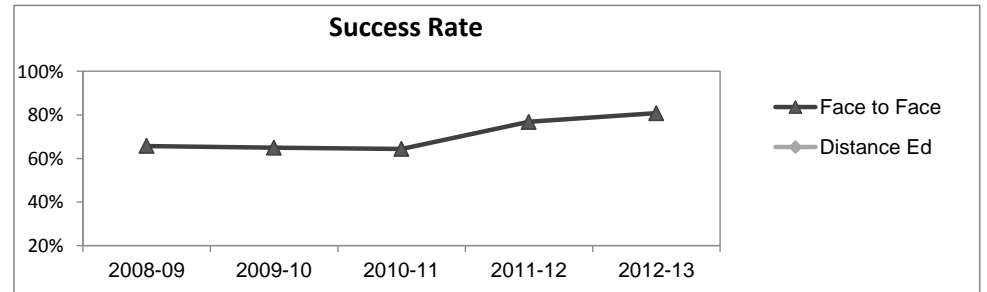
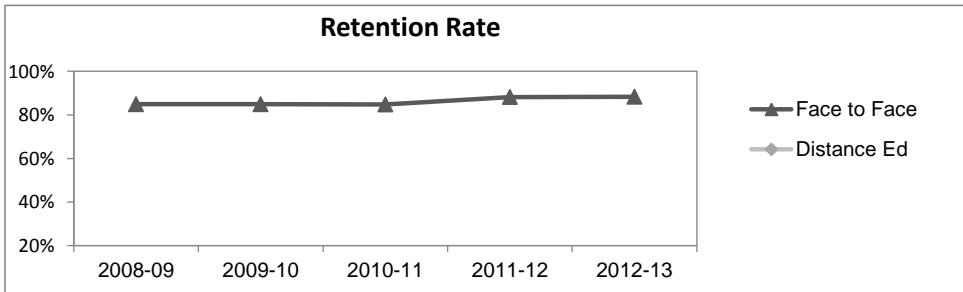
Course Enrollments - Productivity

	2008-09			2009-10			2010-11			2011-12			2012-13			2012-13		
	F-t-F ³	DE	Total	F-t-F ³	DE	Total	F-t-F ³	DE	Total	F-t-F ³	DE	Total	Subject			Collegewide		
	F-t-F ³	DE	Total	F-t-F ³	DE	Total	F-t-F ³	DE	Total	F-t-F ³	DE	Total	F-t-F ³	DE	Total	F-t-F ³	DE	Total
Number of Sections	208	0	208	153	0	153	140	0	140	109	0	109	107	0	107	3,285	193	3,478
Enrollment ⁴																		
Census	6,477	0	6,477	6,152	0	6,152	5,581	0	5,581	3,647	0	3,647	3,515	0	3,515	99,531	8,125	107,656
Students/Section ⁵	31		31	40		40	40		40	33		33	33		33	30	42	31
Productivity																		
FTES ⁶	541.8	0	541.8	517.4	0	517.4	509.6	0	509.6	447.3	0	447.3	450.1	0	450.1	11,680.8	901.0	12,581.8
FTEF ⁶	40.4	0	40.4	34.3	0	34.3	33.5	0	33.5	27.7	0	27.7	23.8	0	23.8	667.0	37.4	704.4
Contract			38%			45%			47%			58%			62%			61%
Overload			5%			4%			4%			6%			3%			9%
Adjunct			47%			43%			42%			31%			29%			22%
Summer			9%			8%			7%			6%			6%			7%
FTES/FTEF ⁷	13.4		13.4	15.1		15.1	15.2		15.2	16.2		16.2	18.9		18.9	17.5	24.1	17.9



Outcomes

	2008-09			2009-10			2010-11			2011-12			2012-13			2012-13		
	F-t-F ³	DE	Total	F-t-F ³	DE	Total	F-t-F ³	DE	Total	F-t-F ³	DE	Total	Subject			Collegewide		
	F-t-F ³	DE	Total	F-t-F ³	DE	Total	F-t-F ³	DE	Total	F-t-F ³	DE	Total	F-t-F ³	DE	Total	F-t-F ³	DE	Total
Retention Rate ⁸	84.9%		84.9%	84.9%		84.9%	84.8%		84.8%	88.2%		88.2%	88.3%		88.3%	85.9%	76.0%	85.1%
Success Rate ⁸	65.7%		65.7%	65.0%		65.0%	64.4%		64.4%	76.8%		76.8%	80.8%		80.8%	69.1%	53.4%	67.9%



Physical Education

Degrees - Certificates

	2008-09			2009-10			2010-11			2011-12			2012-13			2012-13		
	AA	AS	CERT	AA	AS	CERT	AA	AS	CERT	AA	AS	CERT	Subject			Collegewide		
	AA	AS	CERT	AA	AS	CERT	AA	AS	CERT	AA	AS	CERT	AA	AS	CERT	AA	AS	CERT
Awards related to or contributed to by Health, Physical Education, & Athletics																		
Physical Education	4	0	0	1	0	0	3	0	0	1	0	0	1	0	0			
Total Awards by Type	4	0	0	1	0	0	3	0	0	1	0	0	1	0	0	534	260	969
% of total awards by type	100%	0%	0%	100%	0%	0%	100%	0%	0%	100%	0%	0%	100%	0%	0%	30%	15%	55%
Total Awards	4			1			3			1			1			1,763		
All Allied Health Majors	0	173	122	1	186	106	0	141	213	1	158	227	0	119	194			
Business	97	0	138	90	0	160	97	0	47	102	0	53	104	0	82			
Social & Behavioral Sciences	113	19	14	136	19	7	180	12	8	145	13	11	165	3	10			
Liberal Studies	86	0	0	86	0	0	79	0	0	78	0	0	91	0	0			
Liberal Arts/ Science	233	0	0	164	1	0	133	1	0	85	2	0	61	0	0			

Notes¹ Source: ODS Reports (July, 2013)² Student Headcount, **Unduplicated**: Number of students enrolled on census day, where each student is counted one time.³ F-t-F: Face to Face instructional delivery mode.⁴ Enrollment: Every course in which students are enrolled on census day.⁵ Students/Section: Student enrollments per section on census day. Cross-listed sections are not combined.⁶ Acronyms FTES and FTEF represent full-time equivalent students and full-time equivalent faculty, respectively.⁷ FTES/FTEF: A measurement of productivity where the generally accepted target is 17.5.⁸ Success rate numerator: Number of course enrollments with a successful passing grade (A,B,C,P/CR).

Retention rate numerator: Number of course enrollments retained through the semester (grade = A,B,C,P/CR,D,F,NP/NC,I).

Success and Retention rate denominator: Number of enrollments retained (A,B,C,P/CR,D,F,NP/NC,I), withdrawn (W), and dropped after Census Day (DR).