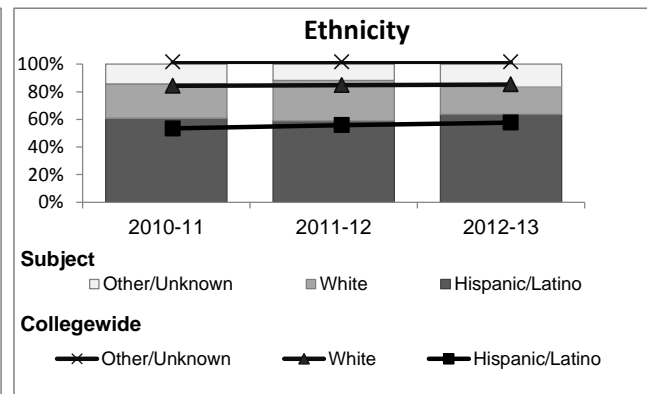
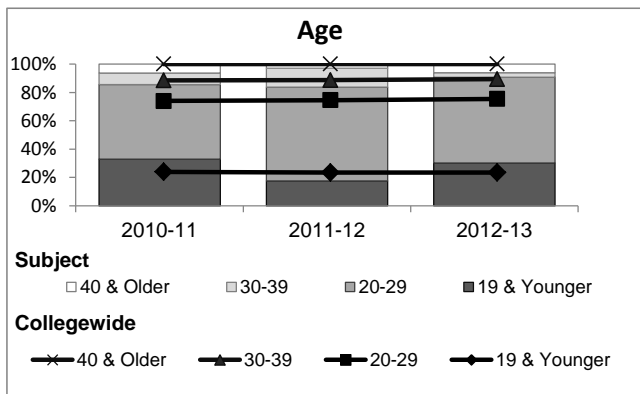
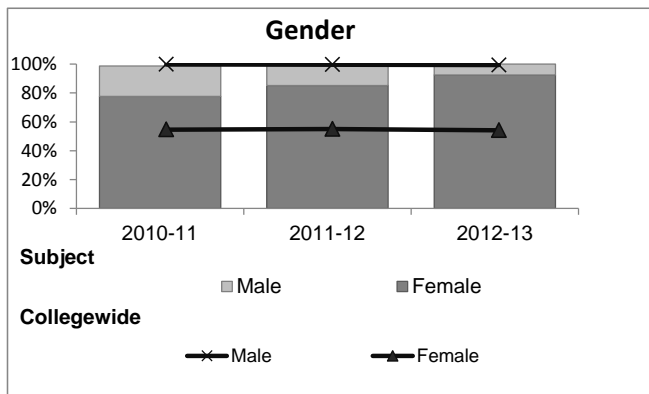


## Education

### Student Demographic Information

Student Headcount	2008-09		2009-10		2010-11		2011-12		2012-13		2012-13	
	#	% change - Prior Yr	#	% change - Prior Yr	#	% change - Prior Yr	#	% change - Prior Yr	Subject		Collegewide	
									#	% change - Prior Yr	#	% change - Prior Yr
Unduplicated <sup>2</sup>	170	--	163	-4%	161	-1%	68	-58%	66	-3%	24,186	-4%

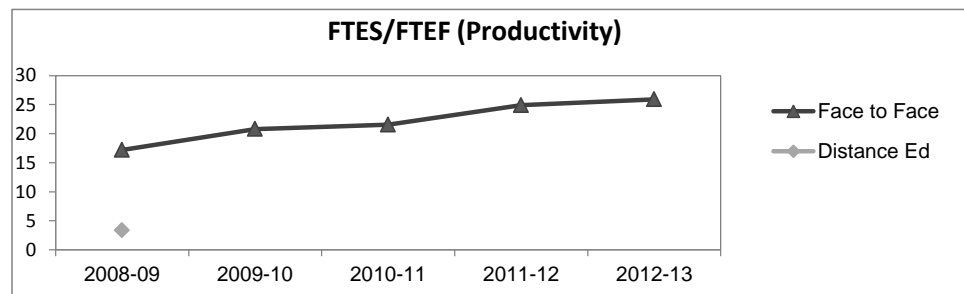
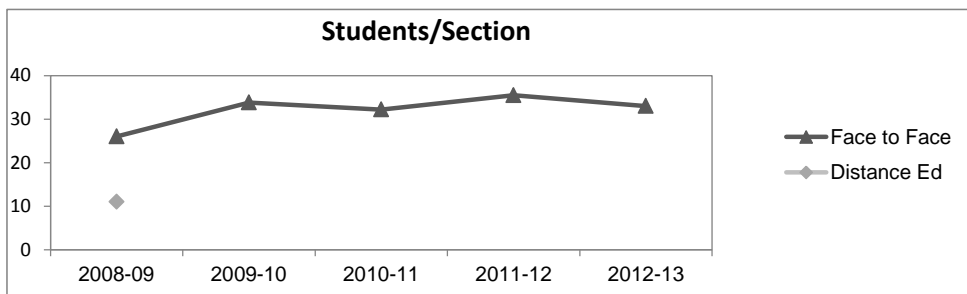
	2008-09		2009-10		2010-11		2011-12		2012-13		2012-13	
	#	%	#	%	#	%	#	%	Subject		Collegewide	
									#	%	#	%
<b>Gender</b>												
Female	141	83%	136	83%	125	78%	58	85%	61	92%	13,002	54%
Male	28	16%	27	17%	34	21%	10	15%	5	8%	11,007	46%
Unknown	1	1%	0	0%	2	1%	0	0%	0	0%	177	1%
<b>Age</b>												
19 & Younger	50	29%	54	33%	53	33%	12	18%	20	30%	5,879	24%
20-29	90	53%	89	55%	85	53%	45	66%	40	61%	12,407	51%
30-39	13	8%	10	6%	13	8%	9	13%	2	3%	3,344	14%
40 & Older	17	10%	10	6%	10	6%	2	3%	4	6%	2,555	11%
<b>Ethnicity</b>												
African American	5	3%	9	6%	11	7%	4	6%	4	6%	1,479	6%
American Indian	1	1%	0	0%	1	1%	0	0%	0	0%	148	1%
Asian/Filipino/Pac Islander	6	4%	6	4%	8	5%	0	0%	2	3%	1,180	5%
Hispanic/Latino	90	53%	107	66%	98	61%	40	59%	42	64%	13,518	56%
White	66	39%	38	23%	40	25%	20	29%	13	20%	6,706	28%
Two or more races	2	1%	2	1%	2	1%	3	4%	5	8%	802	3%
Unknown	0	0%	1	1%	1	1%	1	1%	0	0%	353	1%



## Education

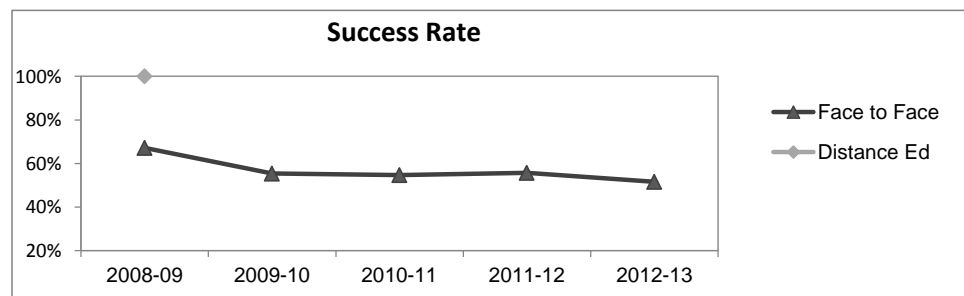
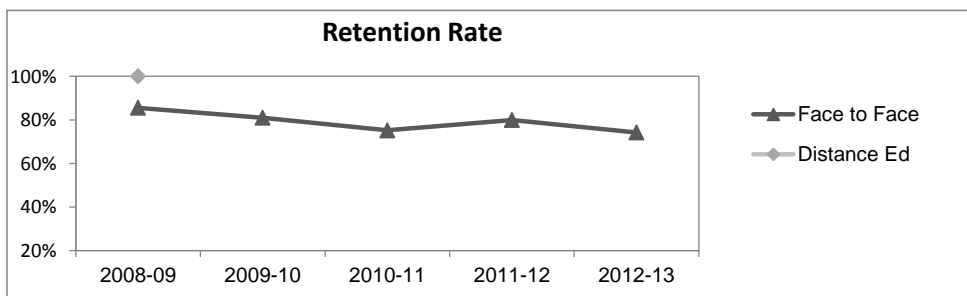
### Course Enrollments - Productivity

	2008-09			2009-10			2010-11			2011-12			2012-13			2012-13		
	F-t-F <sup>3</sup>	DE	Total	F-t-F <sup>3</sup>	DE	Total	F-t-F <sup>3</sup>	DE	Total	F-t-F <sup>3</sup>	DE	Total	Subject	DE	Total	Subject	DE	Total
Number of Sections	6	1	7	5	0	5	5	0	5	2	0	2	2	0	2	3,285	193	3,478
Enrollment <sup>4</sup>																		
Census	156	11	167	169	0	169	161	0	161	71	0	71	66	0	66	99,531	8,125	107,656
Students/Section <sup>5</sup>	26	11	24	34		34	32		32	36		36	33		33	30	42	31
Productivity																		
FTES <sup>6</sup>	13.7	1.1	14.8	15.2	0	15.2	14.3	0	14.3	6.6	0	6.6	6.9	0	6.9	11,680.8	901.0	12,581.8
FTEF <sup>6</sup>	0.8	0.3	1.1	0.7	0	0.7	0.7	0	0.7	0.3	0	0.3	0.3	0	0.3	667.0	37.4	704.4
Contract			0%			0%			0%			0%			0%			61%
Overload			0%			0%			0%			0%			0%			9%
Adjunct			71%			100%			100%			100%			100%			22%
Summer			29%			0%			0%			0%			0%			7%
FTES/FTEF <sup>7</sup>	17.2	3.4	13.1	20.8		20.8	21.6		21.6	24.9		24.9	25.9		25.9	17.5	24.1	17.9



### Outcomes

	2008-09			2009-10			2010-11			2011-12			2012-13			2012-13		
	F-t-F <sup>3</sup>	DE	Total	F-t-F <sup>3</sup>	DE	Total	F-t-F <sup>3</sup>	DE	Total	F-t-F <sup>3</sup>	DE	Total	Subject	DE	Total	Subject	DE	Total
Retention Rate <sup>8</sup>	85.5%	100.0%	86.4%	81.0%		81.0%	75.2%		75.2%	80.0%		80.0%	74.2%		74.2%	85.9%	76.0%	85.1%
Success Rate <sup>8</sup>	67.1%	100.0%	69.1%	55.4%		55.4%	54.7%		54.7%	55.7%		55.7%	51.5%		51.5%	69.1%	53.4%	67.9%



## Education

## Degrees - Certificates

	2008-09			2009-10			2010-11			2011-12			2012-13			2012-13		
	AA	AS	CERT	AA	AS	CERT	AA	AS	CERT	AA	AS	CERT	Subject			Collegewide		
	AA	AS	CERT	AA	AS	CERT	AA	AS	CERT	AA	AS	CERT	AA	AS	CERT	AA	AS	CERT
Awards related to or contributed to by Family and Consumer Education																		
CD Master Teacher Infant/Todl	0	0	0	0	0	2	0	0	1	0	0	0	0	0	2			
CD Master Teacher PreSchool	0	0	2	0	0	0	0	0	0	0	0	0	0	0	0			
CD Master Teacher SpEd	0	0	1	0	0	0	0	0	3	0	0	1	0	0	1			
Child Dev Assistant Teacher	0	0	99	0	0	66	0	0	74	0	0	138	0	0	147			
Child Dev Associate Teacher	0	0	82	0	0	65	0	0	57	0	0	92	0	0	115			
Child Development Teacher	0	0	23	0	0	17	0	0	19	0	1	25	0	0	33			
Child Dvlp & Family Relations	0	57	0	0	47	0	0	34	0	1	47	0	0	31	0			
Child Nutrition Management	0	0	0	0	1	0	0	0	1	0	0	0	0	0	0			
Culinary Arts	0	2	2	0	4	7	0	5	8	0	5	20	0	9	22			
Dietetic Services	0	0	3	0	0	1	0	0	1	0	0	1	0	0	5			
Food Service Management	0	2	0	0	1	0	0	1	0	0	3	0	0	1	0			
<b>Total Awards by Type</b>	0	61	212	0	53	158	0	40	164	1	56	277	0	41	325	534	260	969
<b>% of total awards by type</b>	0%	22%	78%	0%	25%	75%	0%	20%	80%	0%	17%	83%	0%	11%	89%	30%	15%	55%
<b>Total Awards</b>	273			211			204			334			366			1,763		

## Notes

<sup>1</sup> Source: ODS Reports (July, 2013)

<sup>2</sup> Student Headcount, **Unduplicated**: Number of students enrolled on census day, where each student is counted one time.

<sup>3</sup> F-t-F: Face to Face instructional delivery mode.

<sup>4</sup> Enrollment: Every course in which students are enrolled on census day.

<sup>5</sup> Students/Section: Student enrollments per section on census day. Cross-listed sections are not combined.

<sup>6</sup> Acronyms FTES and FTEF represent full-time equivalent students and full-time equivalent faculty, respectively.

<sup>7</sup> FTES/FTEF: A measurement of productivity where the generally accepted target is 17.5.

<sup>8</sup> Success rate numerator: Number of course enrollments with a successful passing grade (A,B,C,P/CR).

Retention rate numerator: Number of course enrollments retained through the semester (grade = A,B,C,P/CR,D,F,NP/NC,I).

Success and Retention rate denominator: Number of enrollments retained (A,B,C,P/CR,D,F,NP/NC,I), withdrawn (W), and dropped after Census Day (DR).