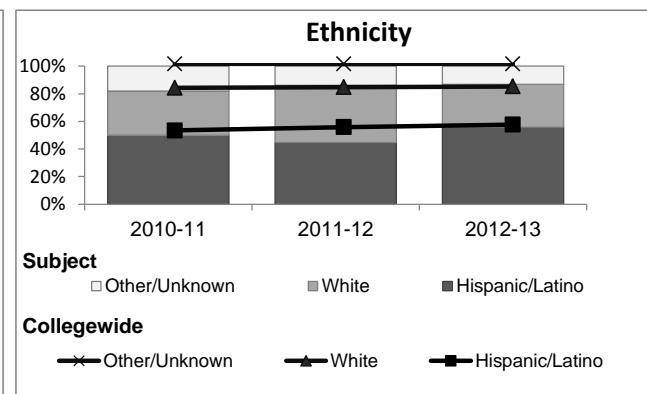
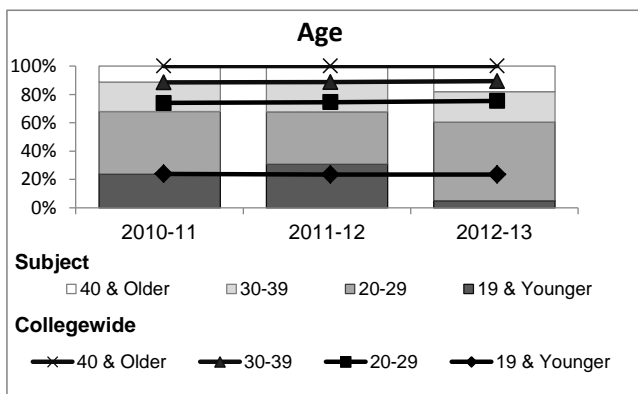
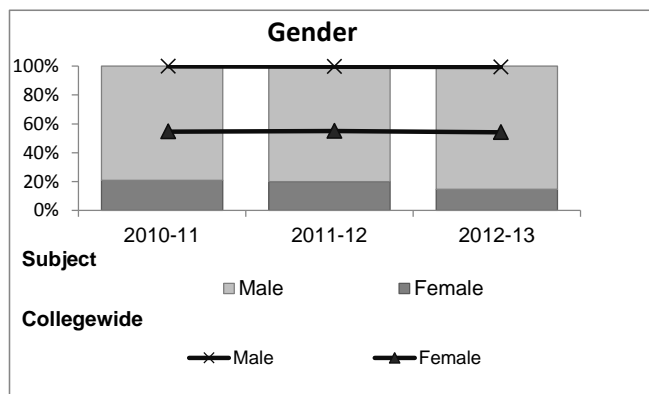


Woodworking

Student Demographic Information

Student Headcount	2008-09		2009-10		2010-11		2011-12		2012-13		2012-13	
	#	% change - Prior Yr	#	% change - Prior Yr	#	% change - Prior Yr	#	% change - Prior Yr	Subject		Collegewide	
									#	% change - Prior Yr	#	% change - Prior Yr
Unduplicated ²	83	--	83	0%	72	-13%	65	-10%	61	-6%	24,186	-4%

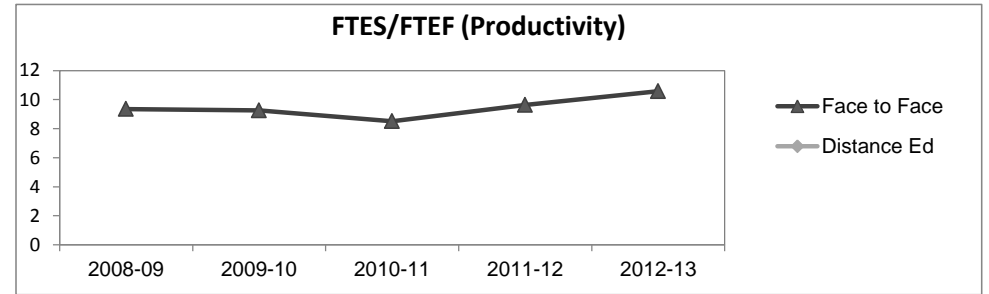
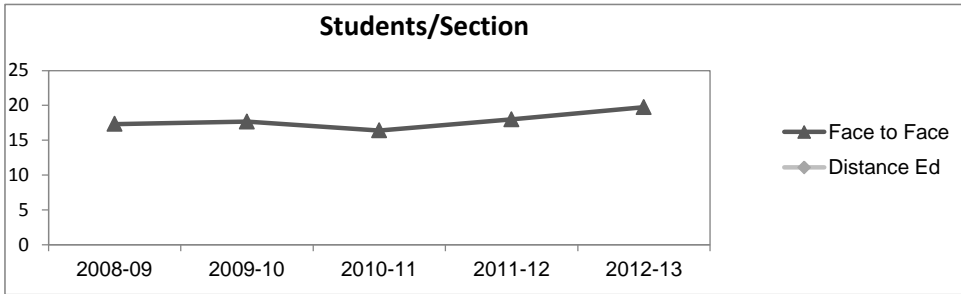
	2008-09		2009-10		2010-11		2011-12		2012-13		2012-13	
	#	%	#	%	#	%	#	%	Subject		Collegewide	
									#	%	#	%
Gender												
Female	13	16%	10	12%	15	21%	13	20%	9	15%	13,002	54%
Male	70	84%	73	88%	57	79%	52	80%	52	85%	11,007	46%
Unknown	0	0%	0	0%	0	0%	0	0%	0	0%	177	1%
Age												
19 & Younger	21	25%	16	19%	17	24%	20	31%	3	5%	5,879	24%
20-29	32	39%	45	54%	32	44%	24	37%	34	56%	12,407	51%
30-39	9	11%	9	11%	15	21%	14	22%	13	21%	3,344	14%
40 & Older	21	25%	13	16%	8	11%	7	11%	11	18%	2,555	11%
Ethnicity												
African American	7	8%	8	10%	4	6%	6	9%	5	8%	1,479	6%
American Indian	1	1%	0	0%	0	0%	1	2%	1	2%	148	1%
Asian/Filipino/Pac Islander	3	4%	8	10%	6	8%	0	0%	2	3%	1,180	5%
Hispanic/Latino	36	43%	36	43%	36	50%	29	45%	34	56%	13,518	56%
White	32	39%	28	34%	23	32%	27	42%	19	31%	6,706	28%
Two or more races	0	0%	1	1%	3	4%	2	3%	0	0%	802	3%
Unknown	4	5%	2	2%	0	0%	0	0%	0	0%	353	1%



Woodworking

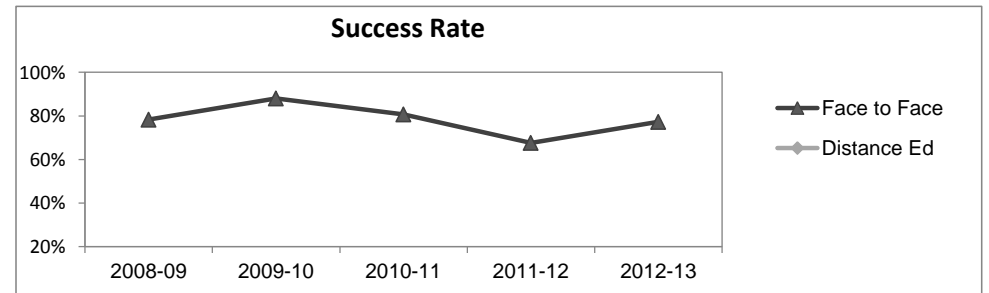
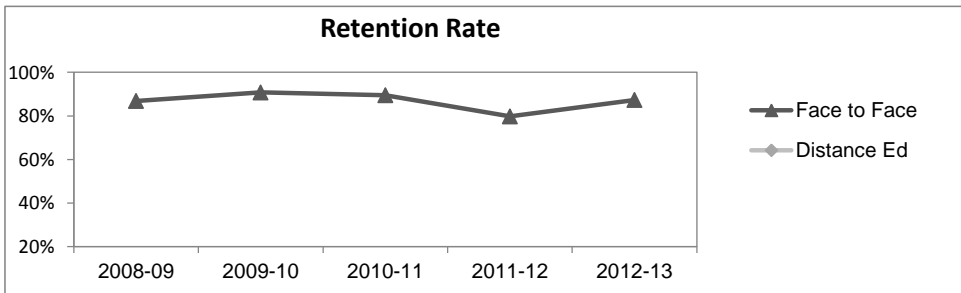
Course Enrollments - Productivity

	2008-09			2009-10			2010-11			2011-12			2012-13			2012-13		
	F-t-F ³	DE	Total	F-t-F ³	DE	Total	F-t-F ³	DE	Total	F-t-F ³	DE	Total	Subject	DE	Total	Collegewide	DE	Total
Number of Sections	6	0	6	6	0	6	5	0	5	4	0	4	4	0	4	3,285	193	3,478
Enrollment ⁴																		
Census	104	0	104	106	0	106	82	0	82	72	0	72	79	0	79	99,531	8,125	107,656
Students/Section ⁵	17		17	18		18	16		16	18		18	20		20	30	42	31
Productivity																		
FTES ⁶	22.5	0	22.5	21.6	0	21.6	16.5	0	16.5	15.4	0	15.4	16.9	0	16.9	11,680.8	901.0	12,581.8
FTEF ⁶	2.4	0	2.4	2.3	0	2.3	1.9	0	1.9	1.6	0	1.6	1.6	0	1.6	667.0	37.4	704.4
Contract			78%			86%			83%			100%			100%			61%
Overload			22%			0%			0%			0%			0%			9%
Adjunct			0%			14%			17%			0%			0%			22%
Summer			0%			0%			0%			0%			0%			7%
FTES/FTEF ⁷	9.4		9.4	9.3		9.3	8.5		8.5	9.6		9.6	10.6		10.6	17.5	24.1	17.9



Outcomes

	2008-09			2009-10			2010-11			2011-12			2012-13			2012-13		
	F-t-F ³	DE	Total	F-t-F ³	DE	Total	F-t-F ³	DE	Total	F-t-F ³	DE	Total	Subject	DE	Total	Collegewide	DE	Total
Retention Rate ⁸	86.8%		86.8%	90.7%		90.7%	89.5%		89.5%	79.7%		79.7%	87.3%		87.3%	85.9%	76.0%	85.1%
Success Rate ⁸	78.3%		78.3%	88.0%		88.0%	80.7%		80.7%	67.6%		67.6%	77.2%		77.2%	69.1%	53.4%	67.9%



Woodworking

Degrees - Certificates

	2008-09			2009-10			2010-11			2011-12			2012-13			2012-13		
	AA	AS	CERT	AA	AS	CERT	AA	AS	CERT	AA	AS	CERT	Subject			Collegewide		
	AA	AS	CERT	AA	AS	CERT	AA	AS	CERT	AA	AS	CERT	AA	AS	CERT	AA	AS	CERT
Awards related to or contributed to by Engineering & Industrial Technology																		
Automotive Technology	0	4	5	0	4	21	0	0	26	0	3	58	0	5	56			
Construction Technology	0	2	36	0	1	26	0	0	0	0	0	8	0	0	1			
Electronics Technology	0	2	7	0	0	5	0	3	15	0	5	13	0	4	9			
Engineering Tech. / Engineering	0	4	0	0	2	0	0	1	0	0	0	0	0	6	0			
Diesel & Farm Equipment	0	0	13	0	0	0	0	0	0	0	0	0	0	0	0			
Industrial Drawing	2	1	38	1	3	43	2	2	36	2	3	28	4	1	25			
Industrial Tech, General	0	0	0	0	0	0	0	2	0	0	0	0	0	1	0			
Manufacturing Technology	0	1	22	0	0	10	0	2	75	0	0	77	0	0	77			
Production Maintenance	0	0	1	0	0	4	0	0	0	0	0	0	0	0	0			
Welding Technology	0	1	10	0	1	40	0	0	32	0	4	54	0	3	56			
Woodworking Technology	0	0	0	0	0	12	0	1	0	0	0	2	0	0	10			
Carpentry Apprenticeship	0	0	3	0	0	0	0	0	0	0	0	0	0	0	0			
Electrician Apprenticeship	0	0	14	0	0	10	0	0	9	0	0	7	0	0	15			
Operating Engineer Apprentice	0	0	5	0	0	0	0	0	4	0	0	6	0	0	0			
Sheetmetal Apprenticeship	0	0	0	0	0	3	0	0	2	0	0	4	0	0	0			
Total Awards by Type	2	15	154	1	11	174	2	11	199	2	15	257	4	20	249	534	260	969
% of total awards by type	1%	9%	90%	1%	6%	94%	1%	5%	94%	1%	5%	94%	1%	7%	91%	30%	15%	55%
Total Awards	171			186			212			274			273			1,763		

Notes¹ Source: ODS Reports (July, 2013)² Student Headcount, **Unduplicated**: Number of students enrolled on census day, where each student is counted one time.³ F-t-F: Face to Face instructional delivery mode.⁴ Enrollment: Every course in which students are enrolled on census day.⁵ Students/Section: Student enrollments per section on census day. Cross-listed sections are not combined.⁶ Acronyms FTES and FTEF represent full-time equivalent students and full-time equivalent faculty, respectively.⁷ FTES/FTEF: A measurement of productivity where the generally accepted target is 17.5.⁸ Success rate numerator: Number of course enrollments with a successful passing grade (A,B,C,P/CR).

Retention rate numerator: Number of course enrollments retained through the semester (grade = A,B,C,P/CR,D,F,NP/NC,I).

Success and Retention rate denominator: Number of enrollments retained (A,B,C,P/CR,D,F,NP/NC,I), withdrawn (W), and dropped after Census Day (DR).