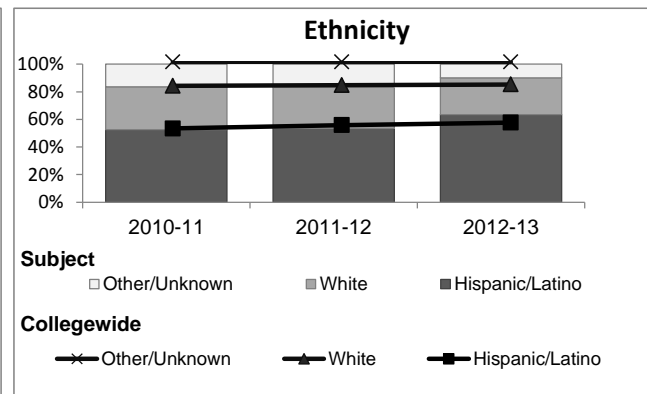
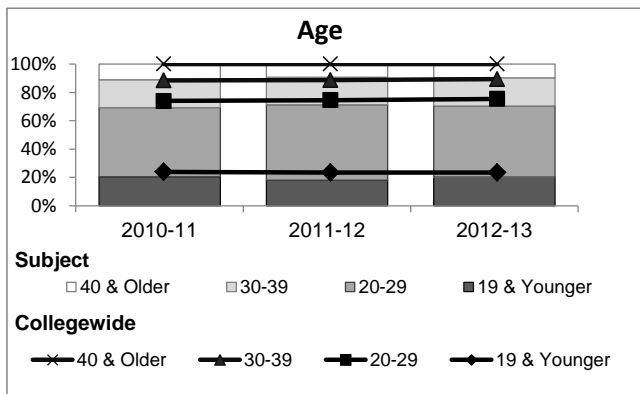
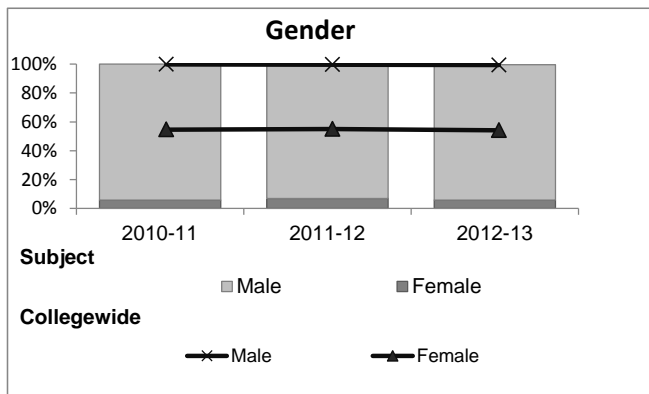


# Welding

## Student Demographic Information

Student Headcount	2008-09		2009-10		2010-11		2011-12		2012-13		2012-13	
	#	% change - Prior Yr	#	% change - Prior Yr	#	% change - Prior Yr	#	% change - Prior Yr	Subject		Collegewide	
									#	% change - Prior Yr	#	% change - Prior Yr
Unduplicated <sup>2</sup>	477	--	352	-26%	381	8%	338	-11%	331	-2%	24,186	-4%

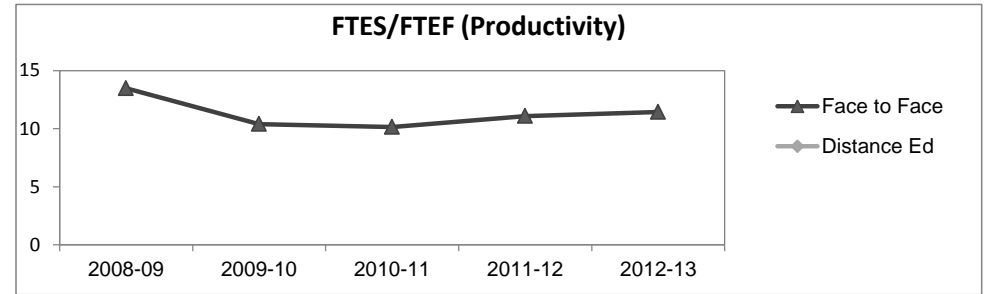
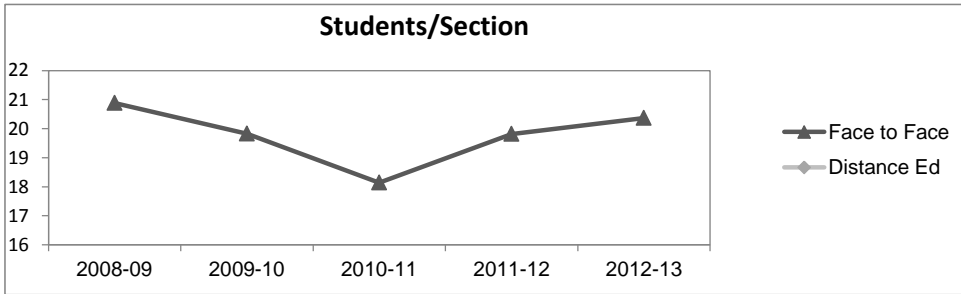
	2008-09		2009-10		2010-11		2011-12		2012-13		2012-13	
	#	%	#	%	#	%	#	%	Subject		Collegewide	
									#	%	#	%
<b>Gender</b>												
Female	20	4%	17	5%	22	6%	23	7%	19	6%	13,002	54%
Male	457	96%	335	95%	359	94%	313	93%	311	94%	11,007	46%
Unknown	0	0%	0	0%	0	0%	2	1%	1	0%	177	1%
<b>Age</b>												
19 & Younger	93	19%	57	16%	78	20%	61	18%	67	20%	5,879	24%
20-29	230	48%	185	53%	186	49%	180	53%	166	50%	12,407	51%
30-39	110	23%	70	20%	75	20%	66	20%	66	20%	3,344	14%
40 & Older	44	9%	40	11%	42	11%	31	9%	32	10%	2,555	11%
<b>Ethnicity</b>												
African American	43	9%	42	12%	37	10%	40	12%	21	6%	1,479	6%
American Indian	7	1%	7	2%	6	2%	1	0%	0	0%	148	1%
Asian/Filipino/Pac Islander	15	3%	10	3%	10	3%	4	1%	4	1%	1,180	5%
Hispanic/Latino	263	55%	188	53%	200	52%	181	54%	210	63%	13,518	56%
White	133	28%	101	29%	119	31%	101	30%	88	27%	6,706	28%
Two or more races	4	1%	0	0%	7	2%	10	3%	5	2%	802	3%
Unknown	12	3%	4	1%	2	1%	1	0%	3	1%	353	1%



## Welding

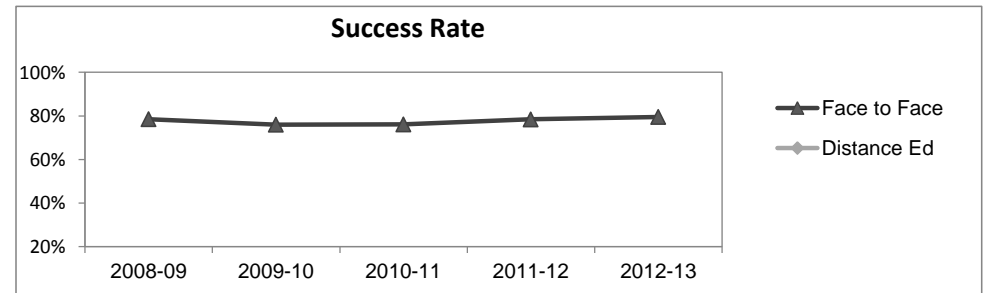
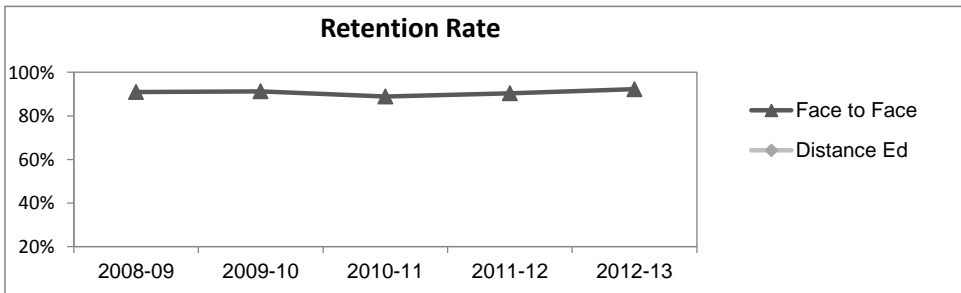
### Course Enrollments - Productivity

	2008-09			2009-10			2010-11			2011-12			2012-13			2012-13		
	F-t-F <sup>3</sup>	DE	Total	F-t-F <sup>3</sup>	DE	Total	F-t-F <sup>3</sup>	DE	Total	F-t-F <sup>3</sup>	DE	Total	Subject	DE	Total	Collegewide	DE	Total
Number of Sections	52	0	52	41	0	41	43	0	43	38	0	38	38	0	38	3,285	193	3,478
Enrollment <sup>4</sup>																		
Census	1,086	0	1,086	813	0	813	780	0	780	753	0	753	774	0	774	99,531	8,125	107,656
Students/Section <sup>5</sup>	21		21	20		20	18		18	20		20	20		20	30	42	31
Productivity																		
FTES <sup>6</sup>	118.5	0	118.5	83.2	0	83.2	79.9	0	79.9	82.0	0	82.0	84.6	0	84.6	11,680.8	901.0	12,581.8
FTEF <sup>6</sup>	8.8	0	8.8	8.0	0	8.0	7.9	0	7.9	7.4	0	7.4	7.4	0	7.4	667.0	37.4	704.4
Contract			50%			62%			76%			81%			78%			61%
Overload			23%			30%			20%			19%			16%			9%
Adjunct			23%			8%			4%			0%			5%			22%
Summer			5%			0%			0%			0%			0%			7%
FTES/FTEF <sup>7</sup>	13.5		13.5	10.4		10.4	10.1		10.1	11.1		11.1	11.4		11.4	17.5	24.1	17.9



### Outcomes

	2008-09			2009-10			2010-11			2011-12			2012-13			2012-13		
	F-t-F <sup>3</sup>	DE	Total	F-t-F <sup>3</sup>	DE	Total	F-t-F <sup>3</sup>	DE	Total	F-t-F <sup>3</sup>	DE	Total	Subject	DE	Total	Collegewide	DE	Total
Retention Rate <sup>8</sup>	91.0%		91.0%	91.3%		91.3%	89.0%		89.0%	90.4%		90.4%	92.2%		92.2%	85.9%	76.0%	85.1%
Success Rate <sup>8</sup>	78.5%		78.5%	75.9%		75.9%	76.1%		76.1%	78.4%		78.4%	79.5%		79.5%	69.1%	53.4%	67.9%



## Welding

## Degrees - Certificates

	2008-09			2009-10			2010-11			2011-12			2012-13			2012-13		
	AA	AS	CERT	AA	AS	CERT	AA	AS	CERT	AA	AS	CERT	Subject			Collegewide		
	AA	AS	CERT	AA	AS	CERT	AA	AS	CERT	AA	AS	CERT	AA	AS	CERT	AA	AS	CERT
Awards related to or contributed to by Engineering & Industrial Technology																		
Automotive Technology	0	4	5	0	4	21	0	0	26	0	3	58	0	5	56			
Construction Technology	0	2	36	0	1	26	0	0	0	0	0	8	0	0	1			
Electronics Technology	0	2	7	0	0	5	0	3	15	0	5	13	0	4	9			
Engineering Tech. / Engineering	0	4	0	0	2	0	0	1	0	0	0	0	0	6	0			
Diesel & Farm Equipment	0	0	13	0	0	0	0	0	0	0	0	0	0	0	0			
Industrial Drawing	2	1	38	1	3	43	2	2	36	2	3	28	4	1	25			
Industrial Tech, General	0	0	0	0	0	0	0	2	0	0	0	0	0	1	0			
Manufacturing Technology	0	1	22	0	0	10	0	2	75	0	0	77	0	0	77			
Production Maintenance	0	0	1	0	0	4	0	0	0	0	0	0	0	0	0			
Welding Technology	0	1	10	0	1	40	0	0	32	0	4	54	0	3	56			
Woodworking Technology	0	0	0	0	0	12	0	1	0	0	0	2	0	0	10			
Carpentry Apprenticeship	0	0	3	0	0	0	0	0	0	0	0	0	0	0	0			
Electrician Apprenticeship	0	0	14	0	0	10	0	0	9	0	0	7	0	0	15			
Operating Engineer Apprentice	0	0	5	0	0	0	0	0	4	0	0	6	0	0	0			
Sheetmetal Apprenticeship	0	0	0	0	0	3	0	0	2	0	0	4	0	0	0			
<b>Total Awards by Type</b>	<b>2</b>	<b>15</b>	<b>154</b>	<b>1</b>	<b>11</b>	<b>174</b>	<b>2</b>	<b>11</b>	<b>199</b>	<b>2</b>	<b>15</b>	<b>257</b>	<b>4</b>	<b>20</b>	<b>249</b>	<b>534</b>	<b>260</b>	<b>969</b>
<b>% of total awards by type</b>	<b>1%</b>	<b>9%</b>	<b>90%</b>	<b>1%</b>	<b>6%</b>	<b>94%</b>	<b>1%</b>	<b>5%</b>	<b>94%</b>	<b>1%</b>	<b>5%</b>	<b>94%</b>	<b>1%</b>	<b>7%</b>	<b>91%</b>	<b>30%</b>	<b>15%</b>	<b>55%</b>
<b>Total Awards</b>	171			186			212			274			273			1,763		

## Notes

<sup>1</sup> Source: ODS Reports (July, 2013)

<sup>2</sup> Student Headcount, **Unduplicated**: Number of students enrolled on census day, where each student is counted one time.

<sup>3</sup> F-t-F: Face to Face instructional delivery mode.

<sup>4</sup> Enrollment: Every course in which students are enrolled on census day.

<sup>5</sup> Students/Section: Student enrollments per section on census day. Cross-listed sections are not combined.

<sup>6</sup> Acronyms FTES and FTEF represent full-time equivalent students and full-time equivalent faculty, respectively.

<sup>7</sup> FTES/FTEF: A measurement of productivity where the generally accepted target is 17.5.

<sup>8</sup> Success rate numerator: Number of course enrollments with a successful passing grade (A,B,C,P/CR).

Retention rate numerator: Number of course enrollments retained through the semester (grade = A,B,C,P/CR,D,F,NP/NC,I).

Success and Retention rate denominator: Number of enrollments retained (A,B,C,P/CR,D,F,NP/NC,I), withdrawn (W), and dropped after Census Day (DR).