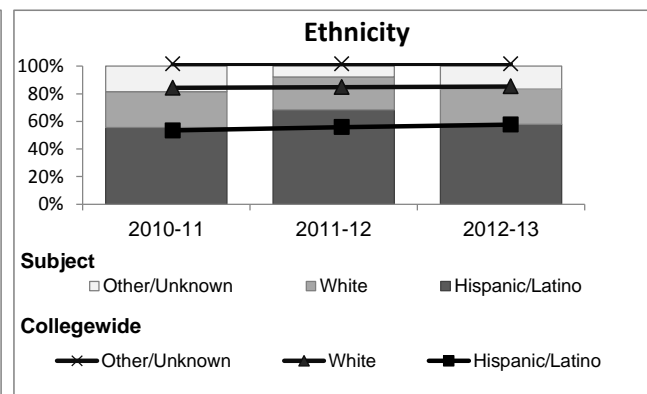
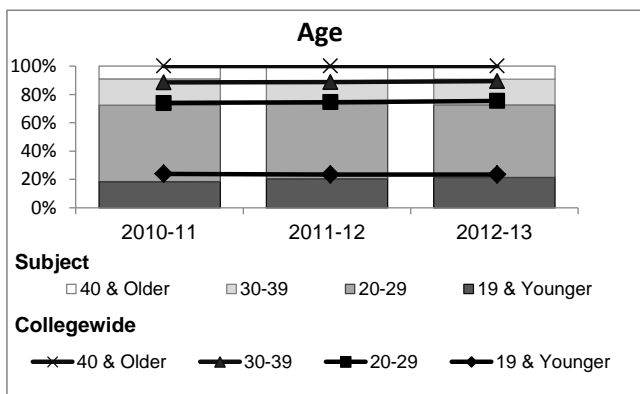
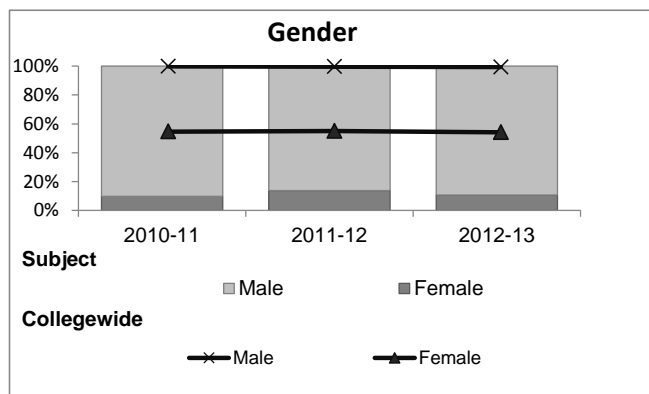


Industrial Technology

Student Demographic Information

Student Headcount	2008-09		2009-10		2010-11		2011-12		2012-13		2012-13	
	Subject		Collegewide		Subject		Collegewide		Subject		Collegewide	
	#	% change - Prior Yr	#	% change - Prior Yr	#	% change - Prior Yr	#	% change - Prior Yr	#	% change - Prior Yr	#	% change - Prior Yr
Unduplicated ²	145	--	90	-38%	124	38%	117	-6%	121	3%	24,186	-4%

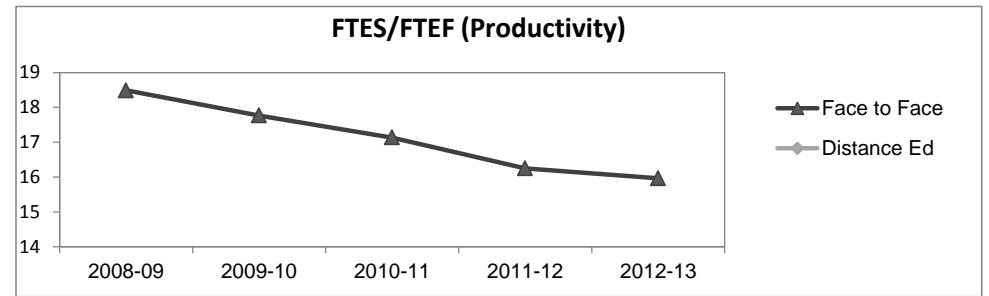
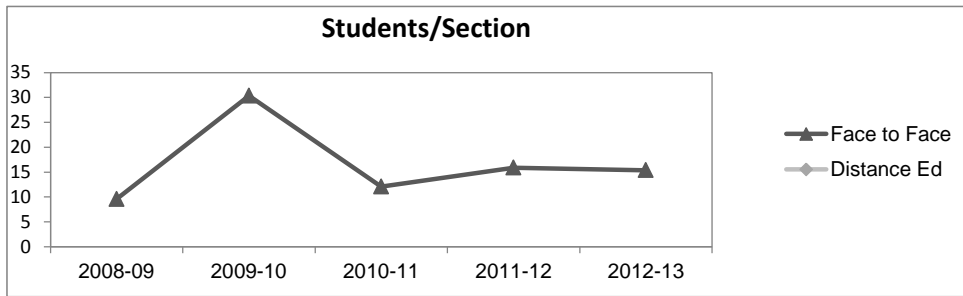
	2008-09		2009-10		2010-11		2011-12		2012-13		2012-13	
	#	%	#	%	#	%	#	%	#	%	#	%
	Gender											
Female	9	6%	6	7%	12	10%	16	14%	13	11%	13,002	54%
Male	136	94%	84	93%	112	90%	101	86%	108	89%	11,007	46%
Unknown	0	0%	0	0%	0	0%	0	0%	0	0%	177	1%
Age												
19 & Younger	47	32%	18	20%	23	19%	24	21%	26	21%	5,879	24%
20-29	76	52%	44	49%	67	54%	62	53%	62	51%	12,407	51%
30-39	13	9%	23	26%	23	19%	19	16%	22	18%	3,344	14%
40 & Older	9	6%	5	6%	11	9%	12	10%	11	9%	2,555	11%
Ethnicity												
African American	14	10%	9	10%	15	12%	5	4%	14	12%	1,479	6%
American Indian	6	4%	2	2%	1	1%	0	0%	0	0%	148	1%
Asian/Filipino/Pac Islander	6	4%	5	6%	4	3%	1	1%	4	3%	1,180	5%
Hispanic/Latino	73	50%	46	51%	69	56%	80	68%	70	58%	13,518	56%
White	40	28%	27	30%	32	26%	28	24%	31	26%	6,706	28%
Two or more races	1	1%	1	1%	3	2%	3	3%	2	2%	802	3%
Unknown	5	3%	0	0%	0	0%	0	0%	0	0%	353	1%



Industrial Technology

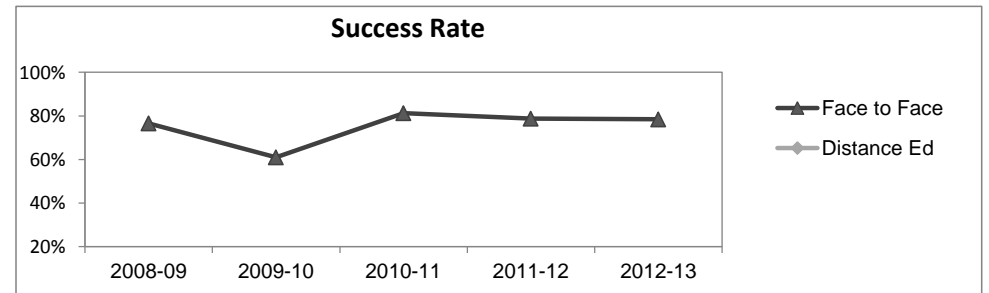
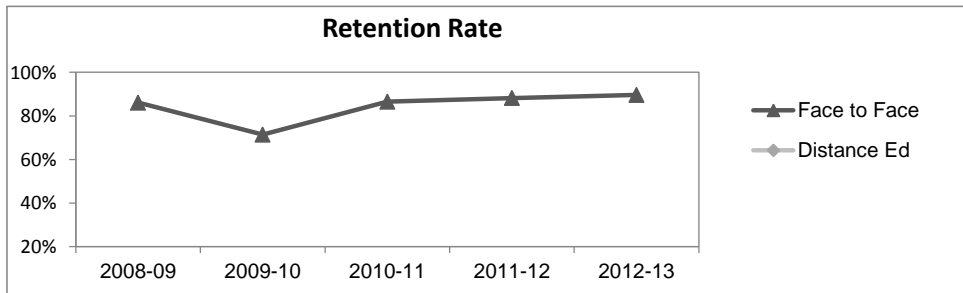
Course Enrollments - Productivity

	2008-09			2009-10			2010-11			2011-12			2012-13			2012-13		
	F-t-F ³	DE	Total	F-t-F ³	DE	Total	F-t-F ³	DE	Total	F-t-F ³	DE	Total	Subject			Collegewide		
	F-t-F ³	DE	Total	F-t-F ³	DE	Total	F-t-F ³	DE	Total	F-t-F ³	DE	Total	F-t-F ³	DE	Total	F-t-F ³	DE	Total
Number of Sections	15	0	15	3	0	3	11	0	11	8	0	8	8	0	8	3,285	193	3,478
Enrollment ⁴																		
Census	144	0	144	91	0	91	133	0	133	127	0	127	123	0	123	99,531	8,125	107,656
Students/Section ⁵	10		10	30		30	12		12	16		16	15		15	30	42	31
Productivity																		
FTES ⁶	13.6	0	13.6	10.7	0	10.7	13.7	0	13.7	13.0	0	13.0	12.8	0	12.8	11,680.8	901.0	12,581.8
FTEF ⁶	0.7	0	0.7	0.6	0	0.6	0.8	0	0.8	0.8	0	0.8	0.8	0	0.8	667.0	37.4	704.4
Contract			73%			67%			50%			50%			100%			61%
Overload			27%			33%			50%			50%			0%			9%
Adjunct			0%			0%			0%			0%			0%			22%
Summer			0%			0%			0%			0%			0%			7%
FTES/FTEF ⁷	18.5		18.5	17.8		17.8	17.1		17.1	16.2		16.2	16.0		16.0	17.5	24.1	17.9



Outcomes

	2008-09			2009-10			2010-11			2011-12			2012-13			2012-13		
	F-t-F ³	DE	Total	F-t-F ³	DE	Total	F-t-F ³	DE	Total	F-t-F ³	DE	Total	Subject			Collegewide		
	F-t-F ³	DE	Total	F-t-F ³	DE	Total	F-t-F ³	DE	Total	F-t-F ³	DE	Total	F-t-F ³	DE	Total	F-t-F ³	DE	Total
Retention Rate ⁸	86.1%		86.1%	71.4%		71.4%	86.5%		86.5%	88.2%		88.2%	89.6%		89.6%	85.9%	76.0%	85.1%
Success Rate ⁸	76.6%		76.6%	61.0%		61.0%	81.2%		81.2%	78.7%		78.7%	78.4%		78.4%	69.1%	53.4%	67.9%



Industrial Technology

Degrees - Certificates

	2008-09			2009-10			2010-11			2011-12			2012-13			2012-13		
	AA	AS	CERT	AA	AS	CERT	AA	AS	CERT	AA	AS	CERT	Subject			Collegewide		
	AA	AS	CERT	AA	AS	CERT	AA	AS	CERT	AA	AS	CERT	AA	AS	CERT	AA	AS	CERT
Awards related to or contributed to by Engineering & Industrial Technology																		
Automotive Technology	0	4	5	0	4	21	0	0	26	0	3	58	0	5	56			
Construction Technology	0	2	36	0	1	26	0	0	0	0	0	8	0	0	1			
Electronics Technology	0	2	7	0	0	5	0	3	15	0	5	13	0	4	9			
Engineering Tech. / Engineering	0	4	0	0	2	0	0	1	0	0	0	0	0	6	0			
Diesel & Farm Equipment	0	0	13	0	0	0	0	0	0	0	0	0	0	0	0			
Industrial Drawing	2	1	38	1	3	43	2	2	36	2	3	28	4	1	25			
Industrial Tech, General	0	0	0	0	0	0	0	2	0	0	0	0	0	1	0			
Manufacturing Technology	0	1	22	0	0	10	0	2	75	0	0	77	0	0	77			
Production Maintenance	0	0	1	0	0	4	0	0	0	0	0	0	0	0	0			
Welding Technology	0	1	10	0	1	40	0	0	32	0	4	54	0	3	56			
Woodworking Technology	0	0	0	0	0	12	0	1	0	0	0	2	0	0	10			
Carpentry Apprenticeship	0	0	3	0	0	0	0	0	0	0	0	0	0	0	0			
Electrician Apprenticeship	0	0	14	0	0	10	0	0	9	0	0	7	0	0	15			
Operating Engineer Apprentice	0	0	5	0	0	0	0	0	4	0	0	6	0	0	0			
Sheetmetal Apprenticeship	0	0	0	0	0	3	0	0	2	0	0	4	0	0	0			
Total Awards by Type	2	15	154	1	11	174	2	11	199	2	15	257	4	20	249	534	260	969
% of total awards by type	1%	9%	90%	1%	6%	94%	1%	5%	94%	1%	5%	94%	1%	7%	91%	30%	15%	55%
Total Awards	171			186			212			274			273			1,763		

Notes¹ Source: ODS Reports (July, 2013)² Student Headcount, **Unduplicated**: Number of students enrolled on census day, where each student is counted one time.³ F-t-F: Face to Face instructional delivery mode.⁴ Enrollment: Every course in which students are enrolled on census day.⁵ Students/Section: Student enrollments per section on census day. Cross-listed sections are not combined.⁶ Acronyms FTES and FTEF represent full-time equivalent students and full-time equivalent faculty, respectively.⁷ FTES/FTEF: A measurement of productivity where the generally accepted target is 17.5.⁸ Success rate numerator: Number of course enrollments with a successful passing grade (A,B,C,P/CR).

Retention rate numerator: Number of course enrollments retained through the semester (grade = A,B,C,P/CR,D,F,NP/NC,I).

Success and Retention rate denominator: Number of enrollments retained (A,B,C,P/CR,D,F,NP/NC,I), withdrawn (W), and dropped after Census Day (DR).