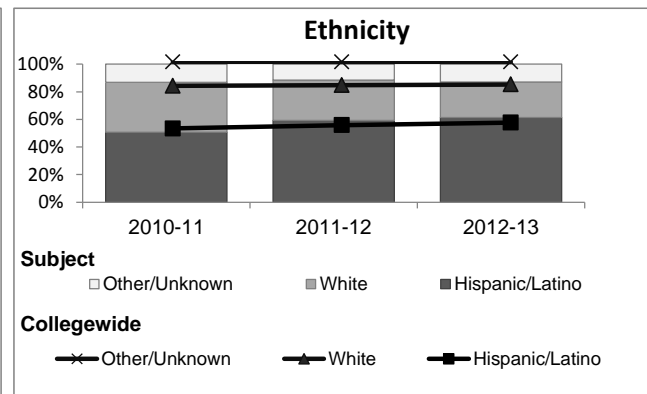
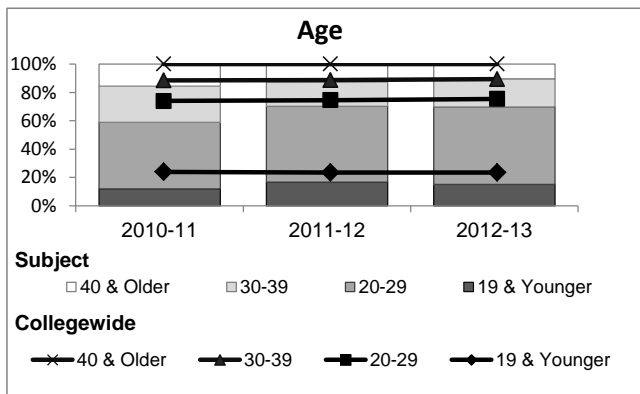
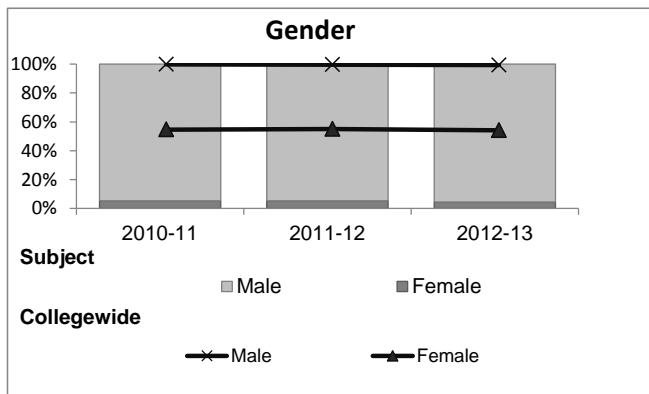


Electronics Technology

Student Demographic Information

Student Headcount	2008-09		2009-10		2010-11		2011-12		2012-13		2012-13	
	#	% change - Prior Yr	#	% change - Prior Yr	#	% change - Prior Yr	#	% change - Prior Yr	Subject		Collegewide	
									#	% change - Prior Yr	#	% change - Prior Yr
Unduplicated ²	265	--	229	-14%	282	23%	228	-19%	272	19%	24,186	-4%

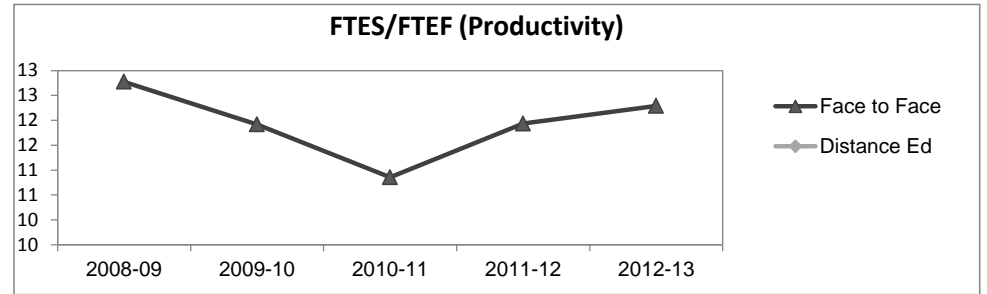
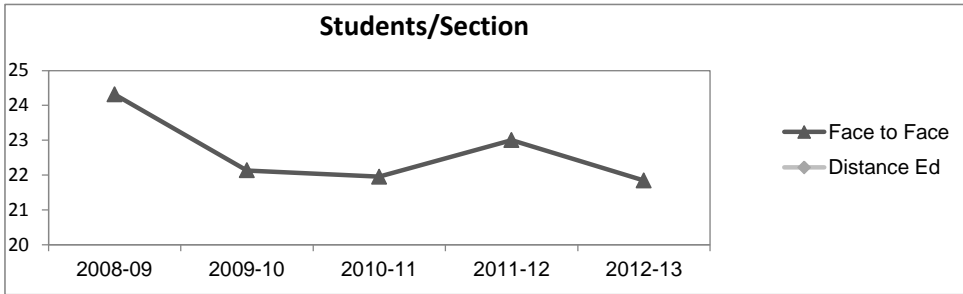
	2008-09		2009-10		2010-11		2011-12		2012-13		2012-13	
	#	%	#	%	#	%	#	%	Subject		Collegewide	
									#	%	#	%
Gender												
Female	7	3%	6	3%	15	5%	12	5%	12	4%	13,002	54%
Male	258	97%	223	97%	267	95%	216	95%	260	96%	11,007	46%
Unknown	0	0%	0	0%	0	0%	0	0%	0	0%	177	1%
Age												
19 & Younger	33	12%	38	17%	34	12%	38	17%	41	15%	5,879	24%
20-29	127	48%	98	43%	132	47%	122	54%	149	55%	12,407	51%
30-39	59	22%	55	24%	72	26%	40	18%	54	20%	3,344	14%
40 & Older	46	17%	38	17%	44	16%	28	12%	28	10%	2,555	11%
Ethnicity												
African American	9	3%	13	6%	15	5%	10	4%	14	5%	1,479	6%
American Indian	3	1%	3	1%	1	0%	0	0%	2	1%	148	1%
Asian/Filipino/Pac Islander	16	6%	9	4%	15	5%	7	3%	10	4%	1,180	5%
Hispanic/Latino	136	51%	113	49%	143	51%	135	59%	167	61%	13,518	56%
White	92	35%	81	35%	102	36%	67	29%	70	26%	6,706	28%
Two or more races	4	2%	5	2%	5	2%	8	4%	8	3%	802	3%
Unknown	5	2%	5	2%	1	0%	1	0%	1	0%	353	1%



Electronics Technology

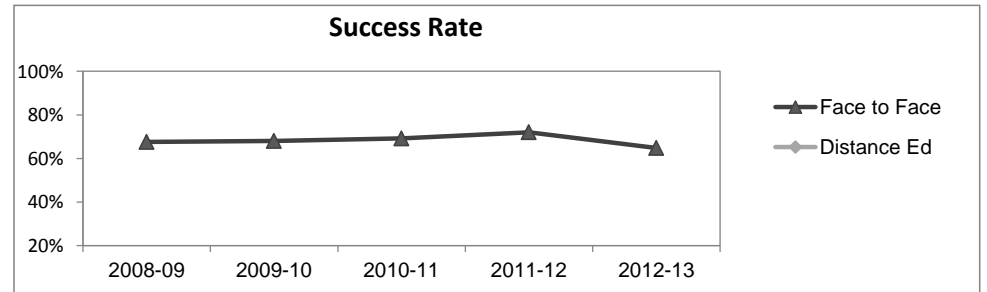
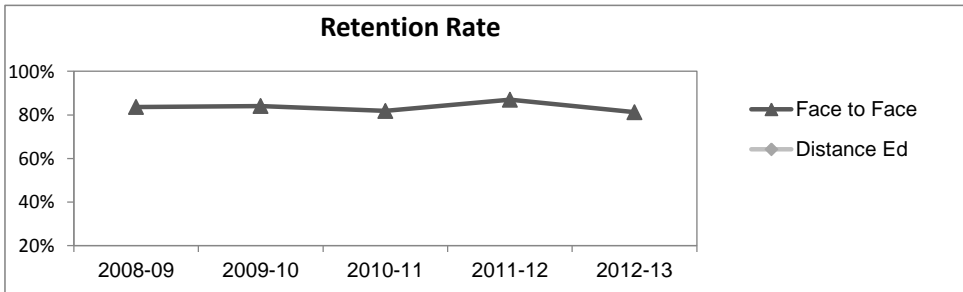
Course Enrollments - Productivity

	2008-09			2009-10			2010-11			2011-12			2012-13			2012-13		
	F-t-F ³	DE	Total	F-t-F ³	DE	Total	F-t-F ³	DE	Total	F-t-F ³	DE	Total	Subject			Collegewide		
	F-t-F ³	DE	Total	F-t-F ³	DE	Total	F-t-F ³	DE	Total	F-t-F ³	DE	Total	F-t-F ³	DE	Total	F-t-F ³	DE	Total
Number of Sections	16	0	16	15	0	15	21	0	21	17	0	17	19	0	19	3,285	193	3,478
Enrollment ⁴																		
Census	389	0	389	332	0	332	461	0	461	391	0	391	415	0	415	99,531	8,125	107,656
Students/Section ⁵	24		24	22		22	22		22	23		23	22		22	30	42	31
Productivity																		
FTES ⁶	72.0	0	72.0	60.4	0	60.4	73.9	0	73.9	66.1	0	66.1	78.6	0	78.6	11,680.8	901.0	12,581.8
FTEF ⁶	5.6	0	5.6	5.1	0	5.1	6.8	0	6.8	5.5	0	5.5	6.4	0	6.4	667.0	37.4	704.4
Contract			67%			66%			53%			71%			53%			61%
Overload			5%			0%			10%			7%			7%			9%
Adjunct			28%			34%			31%			22%			40%			22%
Summer			0%			0%			6%			0%			0%			7%
FTES/FTEF ⁷	12.8		12.8	11.9		11.9	10.9		10.9	11.9		11.9	12.3		12.3	17.5	24.1	17.9



Outcomes

	2008-09			2009-10			2010-11			2011-12			2012-13			2012-13		
	F-t-F ³	DE	Total	F-t-F ³	DE	Total	F-t-F ³	DE	Total	F-t-F ³	DE	Total	Subject			Collegewide		
	F-t-F ³	DE	Total	F-t-F ³	DE	Total	F-t-F ³	DE	Total	F-t-F ³	DE	Total	F-t-F ³	DE	Total	F-t-F ³	DE	Total
Retention Rate ⁸	83.7%		83.7%	84.0%		84.0%	81.8%		81.8%	86.9%		86.9%	81.2%		81.2%	85.9%	76.0%	85.1%
Success Rate ⁸	67.6%		67.6%	68.1%		68.1%	69.2%		69.2%	72.1%		72.1%	64.8%		64.8%	69.1%	53.4%	67.9%



Electronics Technology

Degrees - Certificates

	2008-09			2009-10			2010-11			2011-12			2012-13			2012-13		
	AA	AS	CERT	AA	AS	CERT	AA	AS	CERT	AA	AS	CERT	Subject			Collegewide		
	AA	AS	CERT	AA	AS	CERT	AA	AS	CERT	AA	AS	CERT	AA	AS	CERT	AA	AS	CERT
Awards related to or contributed to by Engineering & Industrial Technology																		
Automotive Technology	0	4	5	0	4	21	0	0	26	0	3	58	0	5	56			
Construction Technology	0	2	36	0	1	26	0	0	0	0	0	8	0	0	1			
Electronics Technology	0	2	7	0	0	5	0	3	15	0	5	13	0	4	9			
Engineering Tech. / Engineering	0	4	0	0	2	0	0	1	0	0	0	0	0	6	0			
Diesel & Farm Equipment	0	0	13	0	0	0	0	0	0	0	0	0	0	0	0			
Industrial Drawing	2	1	38	1	3	43	2	2	36	2	3	28	4	1	25			
Industrial Tech, General	0	0	0	0	0	0	0	2	0	0	0	0	0	1	0			
Manufacturing Technology	0	1	22	0	0	10	0	2	75	0	0	77	0	0	77			
Production Maintenance	0	0	1	0	0	4	0	0	0	0	0	0	0	0	0			
Welding Technology	0	1	10	0	1	40	0	0	32	0	4	54	0	3	56			
Woodworking Technology	0	0	0	0	0	12	0	1	0	0	0	2	0	0	10			
Carpentry Apprenticeship	0	0	3	0	0	0	0	0	0	0	0	0	0	0	0			
Electrician Apprenticeship	0	0	14	0	0	10	0	0	9	0	0	7	0	0	15			
Operating Engineer Apprentice	0	0	5	0	0	0	0	0	4	0	0	6	0	0	0			
Sheetmetal Apprenticeship	0	0	0	0	0	3	0	0	2	0	0	4	0	0	0			
Total Awards by Type	2	15	154	1	11	174	2	11	199	2	15	257	4	20	249	534	260	969
% of total awards by type	1%	9%	90%	1%	6%	94%	1%	5%	94%	1%	5%	94%	1%	7%	91%	30%	15%	55%
Total Awards	171			186			212			274			273			1,763		

Notes

¹ Source: ODS Reports (July, 2013)

² Student Headcount, **Unduplicated**: Number of students enrolled on census day, where each student is counted one time.

³ F-t-F: Face to Face instructional delivery mode.

⁴ Enrollment: Every course in which students are enrolled on census day.

⁵ Students/Section: Student enrollments per section on census day. Cross-listed sections are not combined.

⁶ Acronyms FTES and FTEF represent full-time equivalent students and full-time equivalent faculty, respectively.

⁷ FTES/FTEF: A measurement of productivity where the generally accepted target is 17.5.

⁸ Success rate numerator: Number of course enrollments with a successful passing grade (A,B,C,P/CR).

Retention rate numerator: Number of course enrollments retained through the semester (grade = A,B,C,P/CR,D,F,NP/NC,I).

Success and Retention rate denominator: Number of enrollments retained (A,B,C,P/CR,D,F,NP/NC,I), withdrawn (W), and dropped after Census Day (DR).