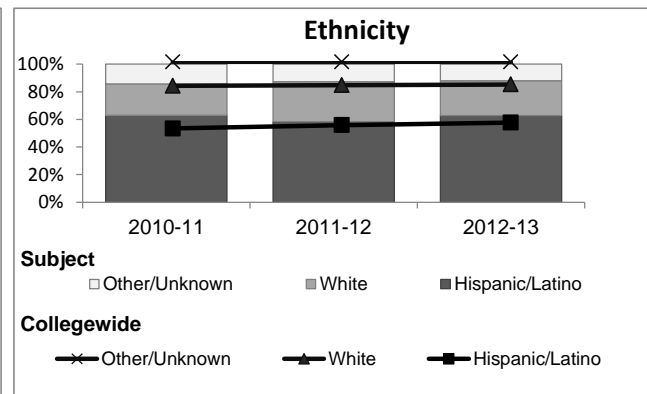
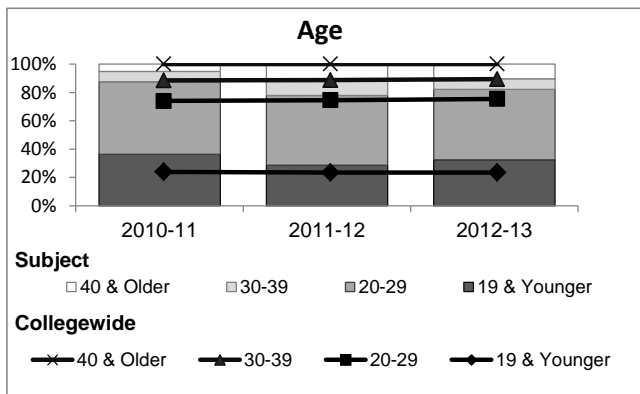
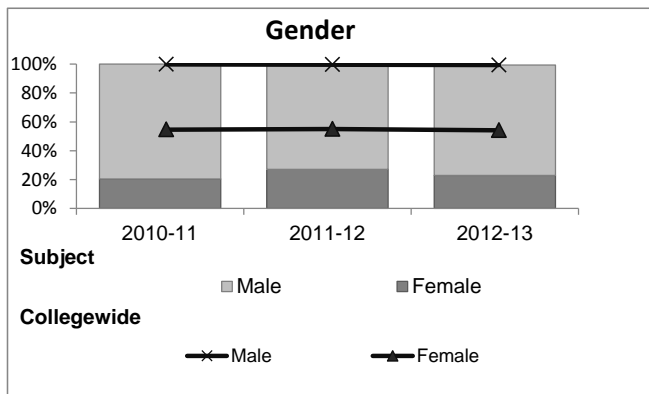


Architecture

Student Demographic Information

Student Headcount	2008-09		2009-10		2010-11		2011-12		2012-13			
	#	% change - Prior Yr	#	% change - Prior Yr	#	% change - Prior Yr	#	% change - Prior Yr	Subject		Collegewide	
									#	% change - Prior Yr	#	% change - Prior Yr
Unduplicated ²	205	--	221	8%	195	-12%	199	2%	175	-12%	24,186	-4%

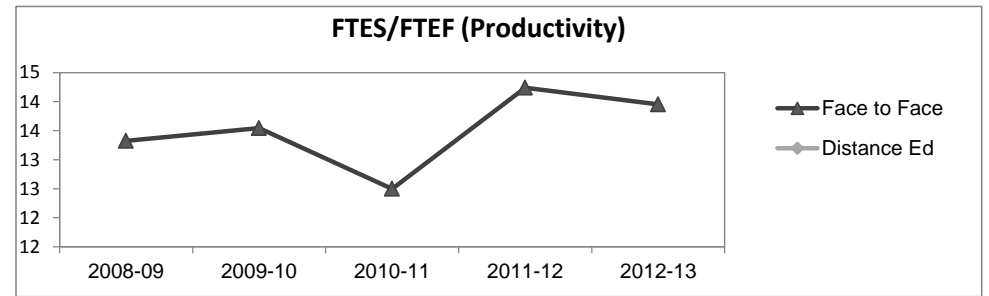
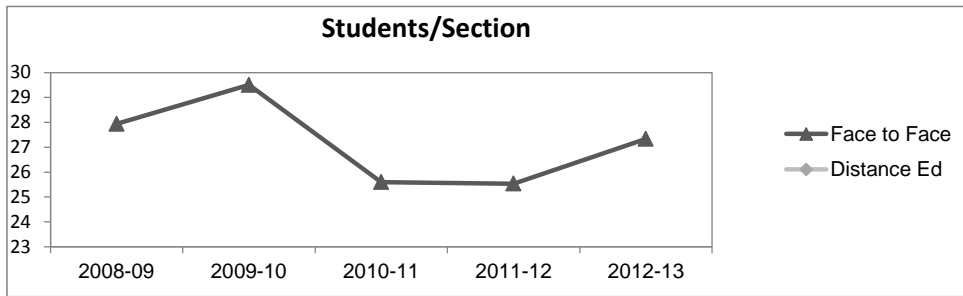
	2008-09		2009-10		2010-11		2011-12		2012-13			
	#	%	#	%	#	%	#	%	Subject		Collegewide	
									#	%	#	%
Gender												
Female	39	19%	35	16%	40	21%	54	27%	40	23%	13,002	54%
Male	166	81%	186	84%	155	79%	144	72%	134	77%	11,007	46%
Unknown	0	0%	0	0%	0	0%	1	1%	1	1%	177	1%
Age												
19 & Younger	69	34%	90	41%	71	36%	57	29%	57	33%	5,879	24%
20-29	91	44%	100	45%	100	51%	98	49%	87	50%	12,407	51%
30-39	18	9%	14	6%	14	7%	22	11%	13	7%	3,344	14%
40 & Older	27	13%	17	8%	10	5%	22	11%	18	10%	2,555	11%
Ethnicity												
African American	6	3%	5	2%	13	7%	13	7%	8	5%	1,479	6%
American Indian	2	1%	2	1%	2	1%	0	0%	1	1%	148	1%
Asian/Filipino/Pac Islander	10	5%	15	7%	8	4%	7	4%	8	5%	1,180	5%
Hispanic/Latino	120	59%	132	60%	123	63%	116	58%	110	63%	13,518	56%
White	60	29%	63	29%	44	23%	58	29%	44	25%	6,706	28%
Two or more races	2	1%	3	1%	5	3%	5	3%	3	2%	802	3%
Unknown	5	2%	1	0%	0	0%	0	0%	1	1%	353	1%



Architecture

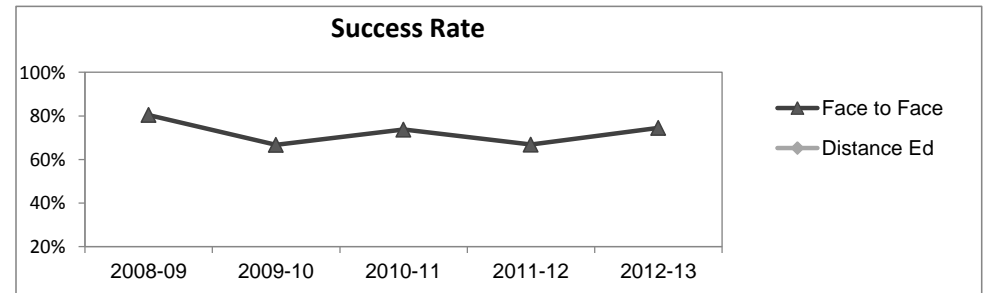
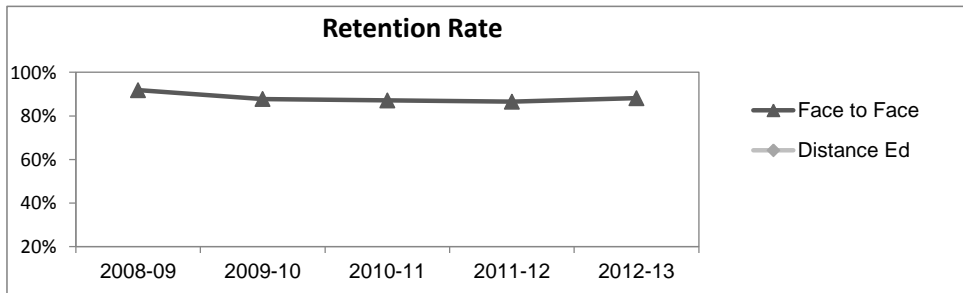
Course Enrollments - Productivity

	2008-09			2009-10			2010-11			2011-12			2012-13			2012-13		
	F-t-F ³	DE	Total	F-t-F ³	DE	Total	F-t-F ³	DE	Total	F-t-F ³	DE	Total	Subject			Collegewide		
	F-t-F ³	DE	Total	F-t-F ³	DE	Total	F-t-F ³	DE	Total	F-t-F ³	DE	Total	F-t-F ³	DE	Total	F-t-F ³	DE	Total
Number of Sections	15	0	15	14	0	14	15	0	15	15	0	15	12	0	12	3,285	193	3,478
Enrollment ⁴																		
Census	419	0	419	413	0	413	384	0	384	383	0	383	328	0	328	99,531	8,125	107,656
Students/Section ⁵	28		28	30		30	26		26	26		26	27		27	30	42	31
Productivity																		
FTES ⁶	70.4	0	70.4	65.2	0	65.2	65.2	0	65.2	63.4	0	63.4	64.4	0	64.4	11,680.8	901.0	12,581.8
FTEF ⁶	5.3	0	5.3	4.8	0	4.8	5.2	0	5.2	4.5	0	4.5	4.6	0	4.6	667.0	37.4	704.4
Contract			62%			65%			69%			83%			77%			61%
Overload			11%			5%			3%			8%			8%			9%
Adjunct			28%			30%			28%			9%			16%			22%
Summer			0%			0%			0%			0%			0%			7%
FTES/FTEF ⁷	13.3		13.3	13.5		13.5	12.5		12.5	14.2		14.2	13.9		13.9	17.5	24.1	17.9



Outcomes

	2008-09			2009-10			2010-11			2011-12			2012-13			2012-13		
	F-t-F ³	DE	Total	F-t-F ³	DE	Total	F-t-F ³	DE	Total	F-t-F ³	DE	Total	Subject			Collegewide		
	F-t-F ³	DE	Total	F-t-F ³	DE	Total	F-t-F ³	DE	Total	F-t-F ³	DE	Total	F-t-F ³	DE	Total	F-t-F ³	DE	Total
Retention Rate ⁸	91.8%		91.8%	87.7%		87.7%	87.1%		87.1%	86.5%		86.5%	88.1%		88.1%	85.9%	76.0%	85.1%
Success Rate ⁸	80.4%		80.4%	66.7%		66.7%	73.7%		73.7%	66.8%		66.8%	74.5%		74.5%	69.1%	53.4%	67.9%



Architecture

Degrees - Certificates

	2008-09			2009-10			2010-11			2011-12			2012-13			2012-13		
	AA	AS	CERT	AA	AS	CERT	AA	AS	CERT	AA	AS	CERT	Subject			Collegewide		
	AA	AS	CERT	AA	AS	CERT	AA	AS	CERT	AA	AS	CERT	AA	AS	CERT	AA	AS	CERT
Awards related to or contributed to by Engineering & Industrial Technology																		
Automotive Technology	0	4	5	0	4	21	0	0	26	0	3	58	0	5	56			
Construction Technology	0	2	36	0	1	26	0	0	0	0	0	8	0	0	1			
Electronics Technology	0	2	7	0	0	5	0	3	15	0	5	13	0	4	9			
Engineering Tech. / Engineering	0	4	0	0	2	0	0	1	0	0	0	0	0	6	0			
Diesel & Farm Equipment	0	0	13	0	0	0	0	0	0	0	0	0	0	0	0			
Industrial Drawing	2	1	38	1	3	43	2	2	36	2	3	28	4	1	25			
Industrial Tech, General	0	0	0	0	0	0	0	2	0	0	0	0	0	1	0			
Manufacturing Technology	0	1	22	0	0	10	0	2	75	0	0	77	0	0	77			
Production Maintenance	0	0	1	0	0	4	0	0	0	0	0	0	0	0	0			
Welding Technology	0	1	10	0	1	40	0	0	32	0	4	54	0	3	56			
Woodworking Technology	0	0	0	0	0	12	0	1	0	0	0	2	0	0	10			
Carpentry Apprenticeship	0	0	3	0	0	0	0	0	0	0	0	0	0	0	0			
Electrician Apprenticeship	0	0	14	0	0	10	0	0	9	0	0	7	0	0	15			
Operating Engineer Apprentice	0	0	5	0	0	0	0	0	4	0	0	6	0	0	0			
Sheetmetal Apprenticeship	0	0	0	0	0	3	0	0	2	0	0	4	0	0	0			
Total Awards by Type	2	15	154	1	11	174	2	11	199	2	15	257	4	20	249	534	260	969
% of total awards by type	1%	9%	90%	1%	6%	94%	1%	5%	94%	1%	5%	94%	1%	7%	91%	30%	15%	55%
Total Awards	171			186			212			274			273			1,763		

Notes

¹ Source: ODS Reports (July, 2013)

² Student Headcount, **Unduplicated**: Number of students enrolled on census day, where each student is counted one time.

³ F-t-F: Face to Face instructional delivery mode.

⁴ Enrollment: Every course in which students are enrolled on census day.

⁵ Students/Section: Student enrollments per section on census day. Cross-listed sections are not combined.

⁶ Acronyms FTES and FTEF represent full-time equivalent students and full-time equivalent faculty, respectively.

⁷ FTES/FTEF: A measurement of productivity where the generally accepted target is 17.5.

⁸ Success rate numerator: Number of course enrollments with a successful passing grade (A,B,C,P/CR).

Retention rate numerator: Number of course enrollments retained through the semester (grade = A,B,C,P/CR,D,F,NP/NC,I).

Success and Retention rate denominator: Number of enrollments retained (A,B,C,P/CR,D,F,NP/NC,I), withdrawn (W), and dropped after Census Day (DR).