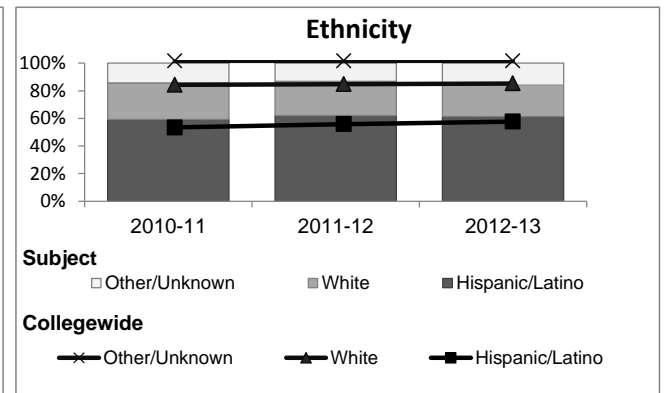
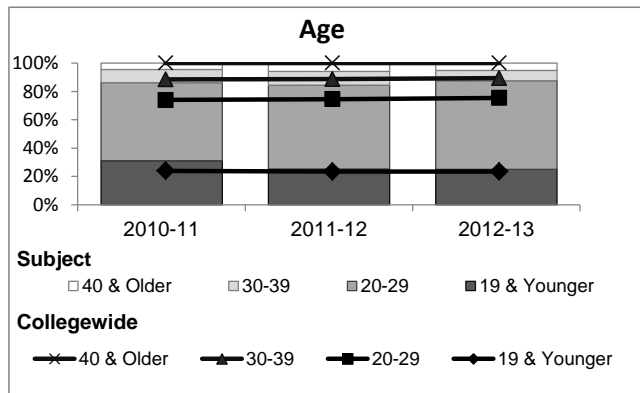
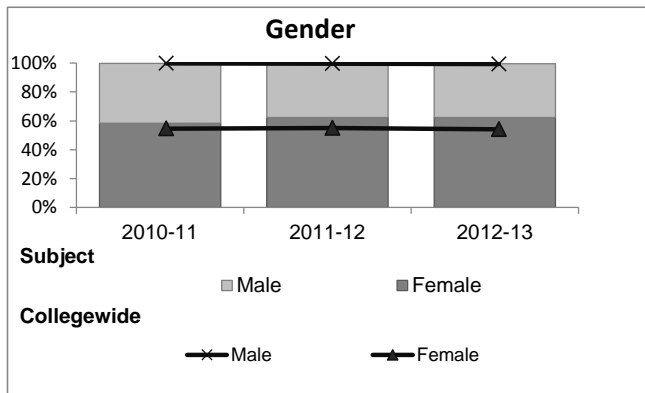


Anthropology

Student Demographic Information

Student Headcount	2008-09		2009-10		2010-11		2011-12		2012-13			
	#	% change - Prior Yr	#	% change - Prior Yr	#	% change - Prior Yr	#	% change - Prior Yr	Subject		Collegewide	
									#	% change - Prior Yr	#	% change - Prior Yr
Unduplicated ²	1,676	--	1,405	-16%	1,226	-13%	1,018	-17%	1,112	9%	24,186	-4%

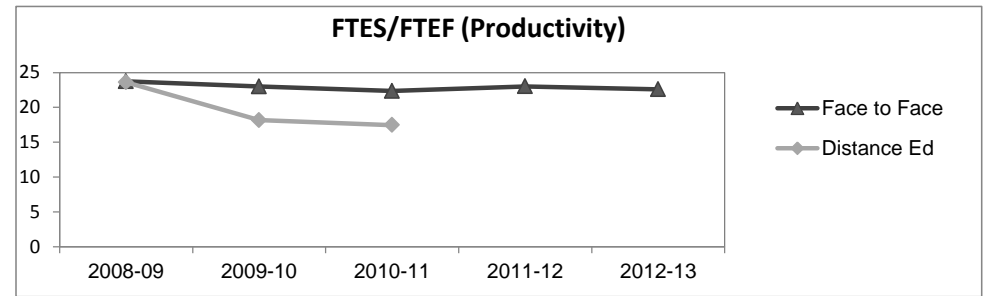
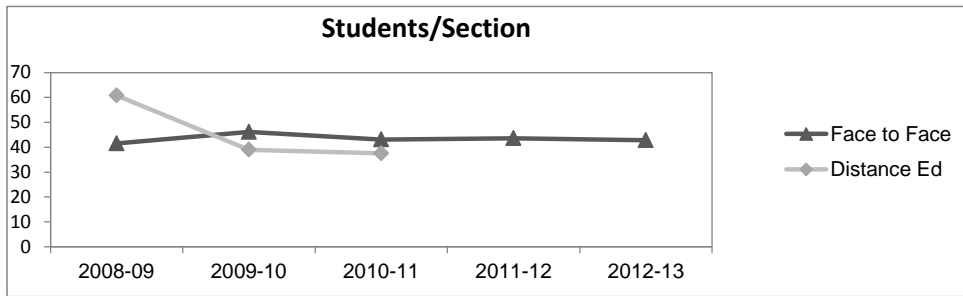
	2008-09		2009-10		2010-11		2011-12		2012-13			
	#	%	#	%	#	%	#	%	Subject		Collegewide	
									#	%	#	%
Gender												
Female	1,026	61%	843	60%	716	58%	634	62%	693	62%	13,002	54%
Male	647	39%	560	40%	508	41%	380	37%	414	37%	11,007	46%
Unknown	3	0%	2	0%	2	0%	4	0%	5	0%	177	1%
Age												
19 & Younger	549	33%	518	37%	381	31%	258	25%	279	25%	5,879	24%
20-29	894	53%	715	51%	678	55%	602	59%	695	63%	12,407	51%
30-39	156	9%	106	8%	114	9%	99	10%	81	7%	3,344	14%
40 & Older	77	5%	66	5%	53	4%	59	6%	57	5%	2,555	11%
Ethnicity												
African American	97	6%	62	4%	61	5%	33	3%	48	4%	1,479	6%
American Indian	10	1%	13	1%	5	0%	3	0%	6	1%	148	1%
Asian/Filipino/Pac Islander	104	6%	86	6%	69	6%	66	6%	83	7%	1,180	5%
Hispanic/Latino	836	50%	762	54%	727	59%	631	62%	683	61%	13,518	56%
White	566	34%	436	31%	325	27%	253	25%	251	23%	6,706	28%
Two or more races	31	2%	35	2%	39	3%	31	3%	41	4%	802	3%
Unknown	32	2%	11	1%	0	0%	1	0%	0	0%	353	1%



Anthropology

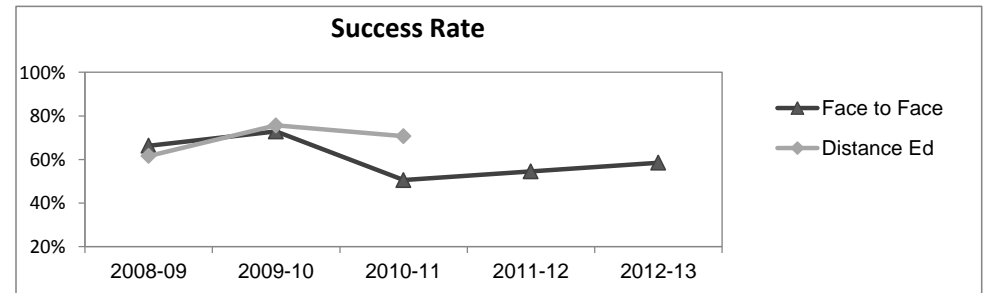
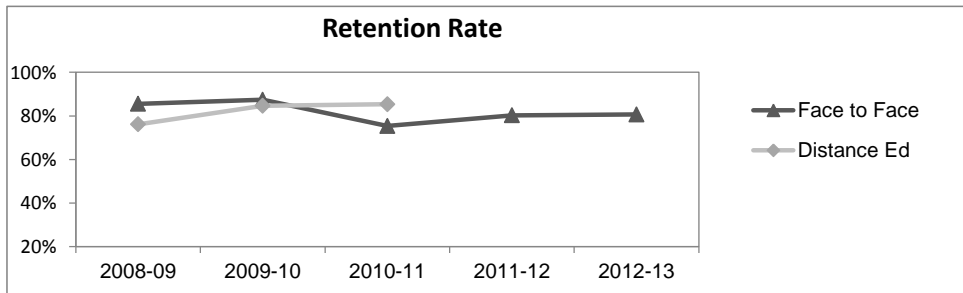
Course Enrollments - Productivity

	2008-09			2009-10			2010-11			2011-12			2012-13			2012-13		
	F-t-F ³	DE	Total	F-t-F ³	DE	Total	F-t-F ³	DE	Total	F-t-F ³	DE	Total	Subject	DE	Total	Collegewide	DE	Total
Number of Sections	37	5	42	31	2	33	29	2	31	25	0	25	28	0	28	3,285	193	3,478
Enrollment ⁴																		
Census	1,536	304	1,840	1,429	78	1,507	1,250	75	1,325	1,091	0	1,091	1,199	0	1,199	99,531	8,125	107,656
Students/Section ⁵	42	61	44	46	39	46	43	38	43	44		44	43		43	30	42	31
Productivity																		
FTES ⁶	163.8	28.3	192.1	151.8	7.3	159.0	131.9	7.0	138.9	115.1	0	115.1	126.6	0	126.6	11,680.8	901.0	12,581.8
FTEF ⁶	6.9	1.2	8.1	6.6	0.4	7.0	5.9	0.4	6.3	5.0	0	5.0	5.6	0	5.6	667.0	37.4	704.4
Contract			37%			49%			43%			20%			29%			61%
Overload			11%			6%			0%			0%			0%			9%
Adjunct			42%			31%			48%			72%			57%			22%
Summer			10%			14%			10%			8%			14%			7%
FTES/FTEF ⁷	23.7	23.6	23.7	23.0	18.2	22.7	22.4	17.5	22.0	23.0		23.0	22.6		22.6	17.5	24.1	17.9



Outcomes

	2008-09			2009-10			2010-11			2011-12			2012-13			2012-13		
	F-t-F ³	DE	Total	F-t-F ³	DE	Total	F-t-F ³	DE	Total	F-t-F ³	DE	Total	Subject	DE	Total	Collegewide	DE	Total
Retention Rate ⁸	85.6%	76.2%	84.0%	87.4%	84.6%	87.3%	75.4%	85.3%	75.9%	80.3%		80.3%	80.7%		80.7%	85.9%	76.0%	85.1%
Success Rate ⁸	66.3%	61.6%	65.6%	72.9%	75.6%	73.0%	50.5%	70.7%	51.6%	54.5%		54.5%	58.5%		58.5%	69.1%	53.4%	67.9%



Anthropology

Degrees - Certificates

	2008-09			2009-10			2010-11			2011-12			2012-13			Collegewide		
	AA	AS	CERT	AA	AS	CERT	AA	AS	CERT	AA	AS	CERT	AA	AS	CERT	AA	AS	CERT
Awards related to or contributed to by Behavioral Science																		
Anthropology	4	0	0	2	0	0	10	0	0	6	0	0	4	0	0			
Criminal Justice	17	0	2	29	0	3	42	0	0	34	1	0	38	0	0			
Human Services	12	18	12	9	19	4	15	12	8	10	12	11	8	3	10			
Psychology	41	1	0	53	0	0	57	0	0	57	0	0	68	0	0			
Sociology	6	0	0	12	0	0	15	0	0	8	0	0	12	0	0			
Total Awards by Type	80	19	14	105	19	7	139	12	8	115	13	11	130	3	10	534	260	969
% of total awards by type	71%	17%	12%	80%	15%	5%	87%	8%	5%	83%	9%	8%	91%	2%	7%	30%	15%	55%
Total Awards	113			131			159			139			143			1,763		
Liberal Studies	86	0	0	86	0	0	79	0	0	78	0	0	91	0	0			
Liberal Arts/ Science	233	0	0	164	1	0	133	1	0	85	2	0	61	0	0			

Notes¹ **Source:** ODS Reports (July, 2013)² **Student Headcount, *Unduplicated*:** Number of students enrolled on census day, where each student is counted one time.³ **F-t-F:** Face to Face instructional delivery mode.⁴ **Enrollment:** Every course in which students are enrolled on census day.⁵ **Students/Section:** Student enrollments per section on census day. Cross-listed sections are not combined.⁶ Acronyms **FTES** and **FTEF** represent full-time equivalent students and full-time equivalent faculty, respectively.⁷ **FTEF/FTEF:** A measurement of productivity where the generally accepted target is 17.5.⁸ **Success rate numerator:** Number of course enrollments with a successful passing grade (A,B,C,P/CR).**Retention rate numerator:** Number of course enrollments retained through the semester (grade = A,B,C,P/CR,D,F,NP/NC,I).**Success and Retention rate denominator:** Number of enrollments retained (A,B,C,P/CR,D,F,NP/NC,I), withdrawn (W), and dropped after Census Day (DR).