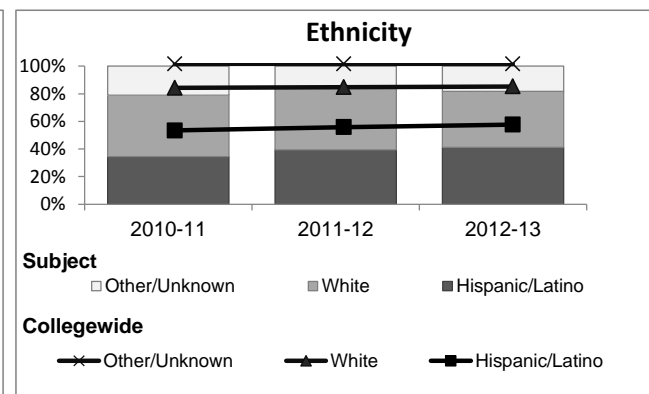
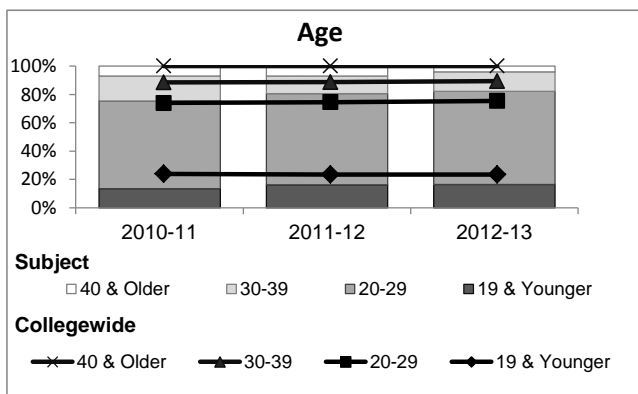
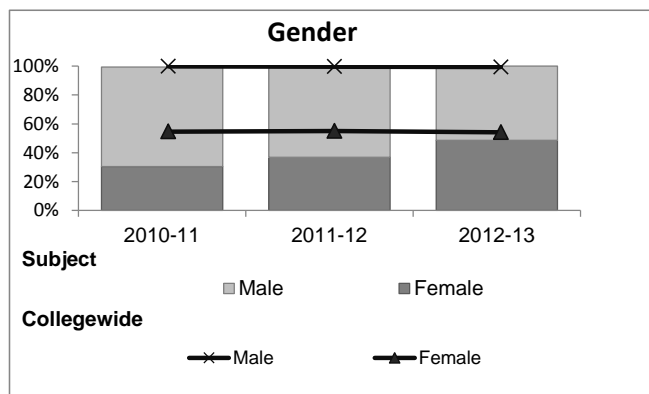


Emergency Medical Technology

Student Demographic Information

Student Headcount	2008-09		2009-10		2010-11		2011-12		2012-13		2012-13	
	Subject		Collegewide		Subject		Collegewide		Subject		Collegewide	
	#	% change - Prior Yr	#	% change - Prior Yr	#	% change - Prior Yr	#	% change - Prior Yr	#	% change - Prior Yr	#	% change - Prior Yr
Unduplicated ²	199	--	182	-9%	191	5%	160	-16%	175	9%	24,186	-4%

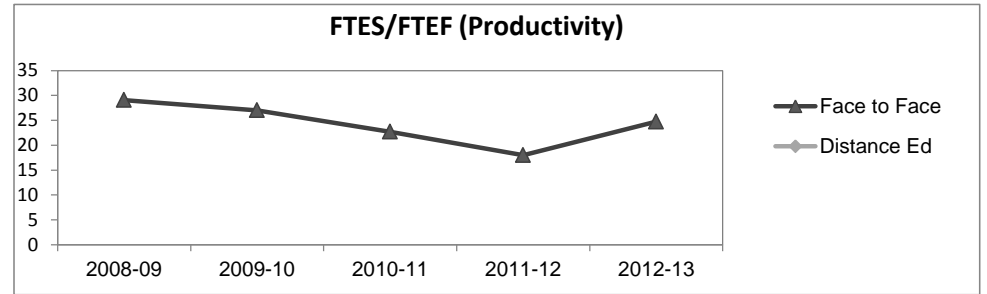
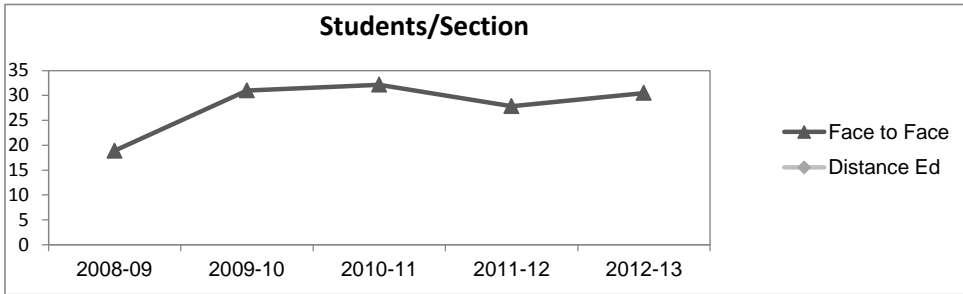
	2008-09		2009-10		2010-11		2011-12		2012-13		2012-13	
	#	%	#	%	#	%	#	%	#	%	#	%
	Gender											
Female	72	36%	59	32%	58	30%	59	37%	85	49%	13,002	54%
Male	125	63%	123	68%	132	69%	100	63%	90	51%	11,007	46%
Unknown	2	1%	0	0%	1	1%	1	1%	0	0%	177	1%
Age												
19 & Younger	28	14%	42	23%	26	14%	26	16%	29	17%	5,879	24%
20-29	118	59%	107	59%	118	62%	103	64%	115	66%	12,407	51%
30-39	35	18%	19	10%	34	18%	20	13%	24	14%	3,344	14%
40 & Older	18	9%	14	8%	13	7%	11	7%	7	4%	2,555	11%
Ethnicity												
African American	11	6%	7	4%	20	10%	6	4%	8	5%	1,479	6%
American Indian	3	2%	2	1%	3	2%	1	1%	2	1%	148	1%
Asian/Filipino/Pac Islander	10	5%	7	4%	9	5%	9	6%	7	4%	1,180	5%
Hispanic/Latino	67	34%	50	27%	66	35%	63	39%	72	41%	13,518	56%
White	99	50%	110	60%	85	45%	72	45%	71	41%	6,706	28%
Two or more races	6	3%	4	2%	7	4%	8	5%	14	8%	802	3%
Unknown	3	2%	2	1%	1	1%	1	1%	1	1%	353	1%



Emergency Medical Technology

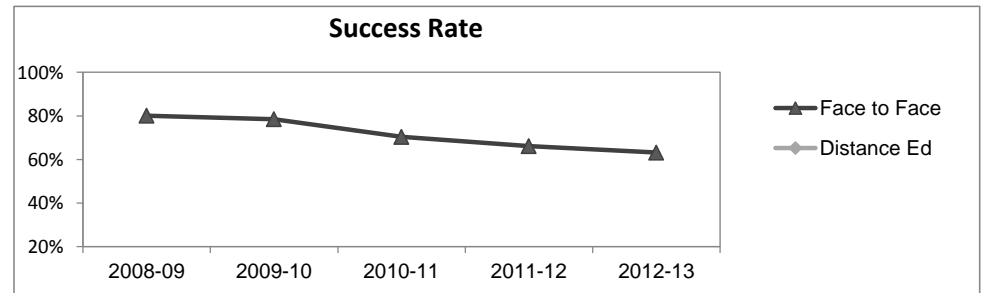
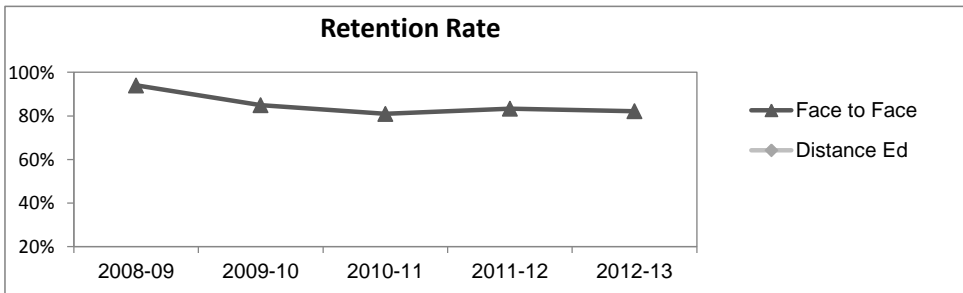
Course Enrollments - Productivity

	2008-09			2009-10			2010-11			2011-12			2012-13			2012-13		
	F-t-F ³	DE	Total	F-t-F ³	DE	Total	F-t-F ³	DE	Total	F-t-F ³	DE	Total	Subject	Subject	Subject	Collegewide	Collegewide	Collegewide
Number of Sections	8	0	8	6	0	6	6	0	6	6	0	6	6	0	6	3,285	193	3,478
Enrollment ⁴																		
Census	151	0	151	186	0	186	193	0	193	167	0	167	183	0	183	99,531	8,125	107,656
Students/Section ⁵	19		19	31		31	32		32	28		28	31		31	30	42	31
Productivity																		
FTES ⁶	45.6	0	45.6	44.5	0	44.5	43.0	0	43.0	35.2	0	35.2	42.2	0	42.2	11,680.8	901.0	12,581.8
FTEF ⁶	1.6	0	1.6	1.6	0	1.6	1.9	0	1.9	2.0	0	2.0	1.7	0	1.7	667.0	37.4	704.4
Contract			0%			0%			0%			0%			0%			61%
Overload			0%			0%			0%			0%			0%			9%
Adjunct			71%			73%			72%			67%			65%			22%
Summer			29%			27%			28%			33%			35%			7%
FTES/FTEF ⁷	29.1		29.1	27.0		27.0	22.7		22.7	18.0		18.0	24.7		24.7	17.5	24.1	17.9



Outcomes

	2008-09			2009-10			2010-11			2011-12			2012-13			2012-13		
	F-t-F ³	DE	Total	F-t-F ³	DE	Total	F-t-F ³	DE	Total	F-t-F ³	DE	Total	Subject	Subject	Subject	Collegewide	Collegewide	Collegewide
Retention Rate ⁸	94.0%		94.0%	84.9%		84.9%	80.9%		80.9%	83.3%		83.3%	82.1%		82.1%	85.9%	76.0%	85.1%
Success Rate ⁸	80.1%		80.1%	78.5%		78.5%	70.4%		70.4%	66.1%		66.1%	63.2%		63.2%	69.1%	53.4%	67.9%



Emergency Medical Technology

Degrees - Certificates

	2008-09			2009-10			2010-11			2011-12			2012-13			Collegewide		
	AA	AS	CERT	AA	AS	CERT	AA	AS	CERT	AA	AS	CERT	AA	AS	CERT	AA	AS	CERT
Awards related to or contributed to by Allied Health																		
Emergency Medical Technology	0	0	0	0	0	0	0	0	92	0	0	77	0	0	88			
Total Awards by Type	0	0	0	0	0	0	0	0	92	0	0	77	0	0	88	534	260	969
% of total awards by type							0%	0%	100%	0%	0%	100%	0%	0%	100%	30%	15%	55%
Total Awards	0			0			92			77			88			1,763		
Nurse Assistant	0	0	99	0	0	83	0	0	101	0	0	118	0	0	90			
Radiological Technology	0	15	0	0	22	0	0	15	0	0	18	19	0	16	0			
Registered Nursing	0	158	0	1	164	0	0	126	0	1	140	0	0	103	0			
Vocational Nursing	0	0	23	0	0	23	0	0	20	0	0	13	0	0	16			
Liberal Studies	86	0	0	86	0	0	79	0	0	78	0	0	91	0	0			
Liberal Arts/ Science	233	0	0	164	1	0	133	1	0	85	2	0	61	0	0			

Notes¹ **Source:** ODS Reports (July, 2013)² **Student Headcount, *Unduplicated*:** Number of students enrolled on census day, where each student is counted one time.³ **F-t-F:** Face to Face instructional delivery mode.⁴ **Enrollment:** Every course in which students are enrolled on census day.⁵ **Students/Section:** Student enrollments per section on census day. Cross-listed sections are not combined.⁶ Acronyms **FTES** and **FTEF** represent full-time equivalent students and full-time equivalent faculty, respectively.⁷ **FTES/FTEF:** A measurement of productivity where the generally accepted target is 17.5.⁸ **Success rate numerator:** Number of course enrollments with a successful passing grade (A,B,C,P/CR).**Retention rate numerator:** Number of course enrollments retained through the semester (grade = A,B,C,P/CR,D,F,NP/NC,I).**Success and Retention rate denominator:** Number of enrollments retained (A,B,C,P/CR,D,F,NP/NC,I), withdrawn (W), and dropped after Census Day (DR).