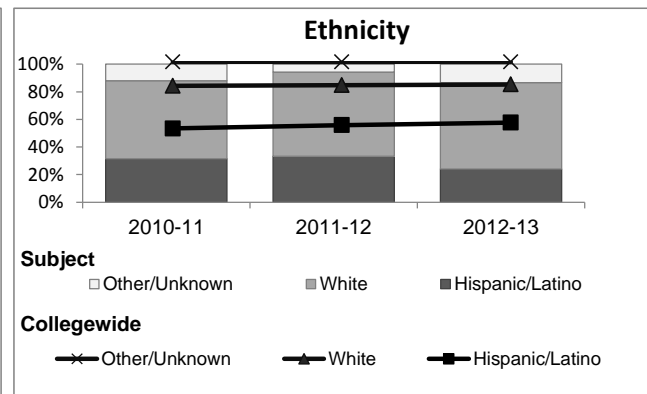
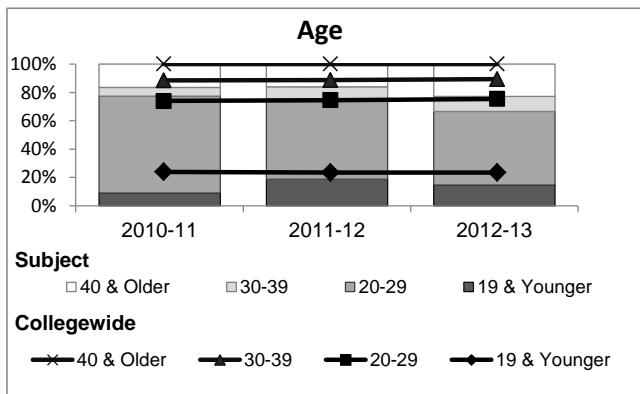
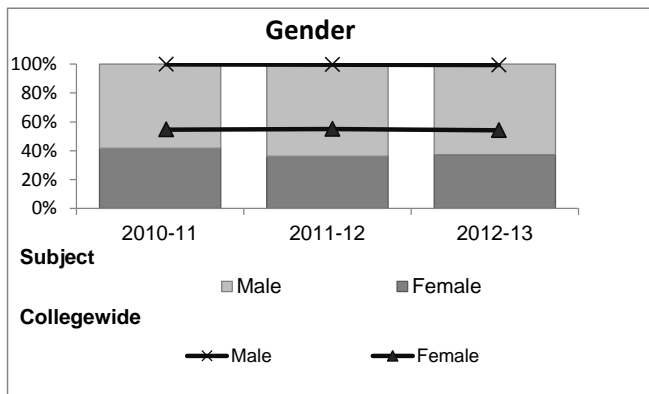


Soils

Student Demographic Information

Student Headcount	2008-09		2009-10		2010-11		2011-12		2012-13		2012-13	
	#	% change - Prior Yr	#	% change - Prior Yr	#	% change - Prior Yr	#	% change - Prior Yr	Subject		Collegewide	
									#	% change - Prior Yr	#	% change - Prior Yr
Unduplicated ²	44	--	61	39%	67	10%	69	3%	75	9%	24,186	-4%

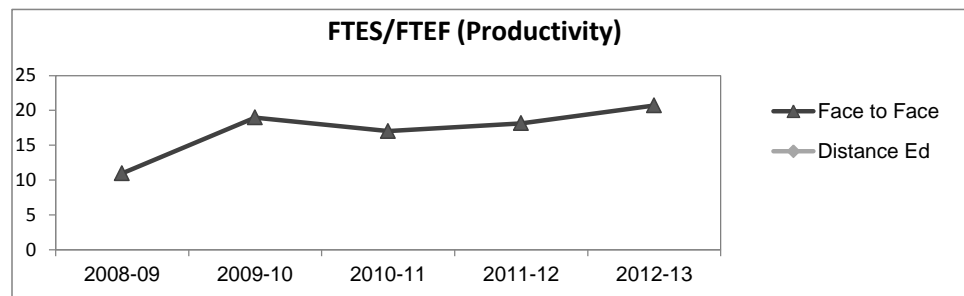
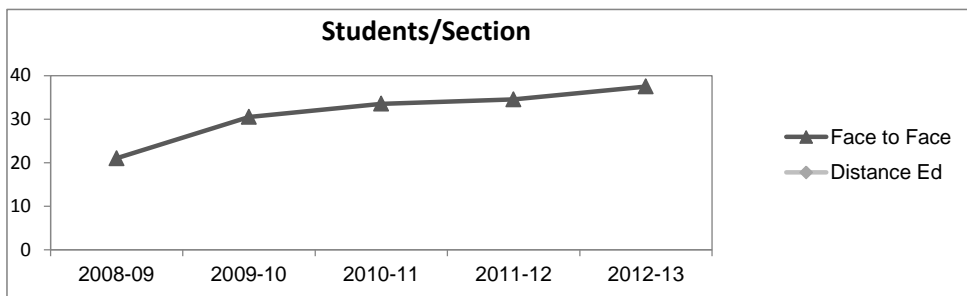
	2008-09		2009-10		2010-11		2011-12		2012-13		2012-13	
	#	%	#	%	#	%	#	%	Subject		Collegewide	
									#	%	#	%
Gender												
Female	7	16%	14	23%	28	42%	25	36%	28	37%	13,002	54%
Male	37	84%	47	77%	39	58%	44	64%	47	63%	11,007	46%
Unknown	0	0%	0	0%	0	0%	0	0%	0	0%	177	1%
Age												
19 & Younger	7	16%	11	18%	6	9%	13	19%	11	15%	5,879	24%
20-29	22	50%	37	61%	46	69%	39	57%	39	52%	12,407	51%
30-39	6	14%	6	10%	4	6%	6	9%	8	11%	3,344	14%
40 & Older	9	20%	7	11%	11	16%	11	16%	17	23%	2,555	11%
Ethnicity												
African American	2	5%	4	7%	3	4%	3	4%	3	4%	1,479	6%
American Indian	1	2%	2	3%	2	3%	0	0%	2	3%	148	1%
Asian/Filipino/Pac Islander	3	7%	2	3%	2	3%	0	0%	1	1%	1,180	5%
Hispanic/Latino	9	20%	17	28%	21	31%	23	33%	18	24%	13,518	56%
White	28	64%	34	56%	38	57%	42	61%	47	63%	6,706	28%
Two or more races	1	2%	0	0%	1	1%	1	1%	4	5%	802	3%
Unknown	0	0%	2	3%	0	0%	0	0%	0	0%	353	1%



Soils

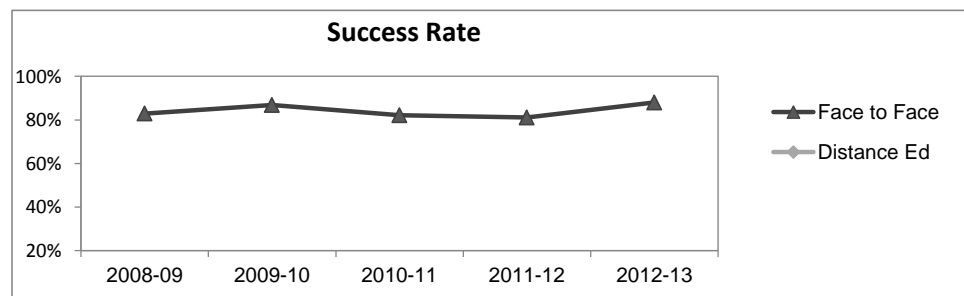
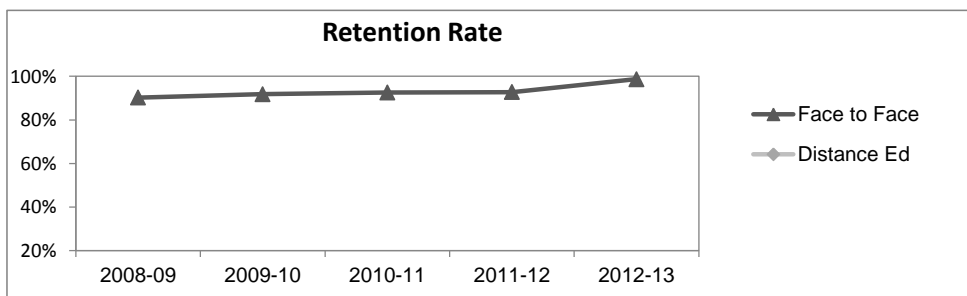
Course Enrollments - Productivity

	2008-09			2009-10			2010-11			2011-12			2012-13			2012-13		
	F-t-F ³	DE	Total	F-t-F ³	DE	Total	F-t-F ³	DE	Total	F-t-F ³	DE	Total	Subject			Collegewide		
	F-t-F ³	DE	Total	F-t-F ³	DE	Total	F-t-F ³	DE	Total	F-t-F ³	DE	Total	F-t-F ³	DE	Total	F-t-F ³	DE	Total
Number of Sections	2	0	2	2	0	2	2	0	2	2	0	2	2	0	2	3,285	193	3,478
Enrollment ⁴																		
Census	42	0	42	61	0	61	67	0	67	69	0	69	75	0	75	99,531	8,125	107,656
Students/Section ⁵	21		21	31		31	34		34	35		35	38		38	30	42	31
Productivity																		
FTES ⁶	8.8	0	8.8	12.6	0	12.6	13.6	0	13.6	14.5	0	14.5	16.5	0	16.5	11,680.8	901.0	12,581.8
FTEF ⁶	0.8	0	0.8	0.7	0	0.7	0.8	0	0.8	0.8	0	0.8	0.8	0	0.8	667.0	37.4	704.4
Contract			83%			80%			67%			50%			67%			61%
Overload			17%			20%			33%			50%			33%			9%
Adjunct			0%			0%			0%			0%			0%			22%
Summer			0%			0%			0%			0%			0%			7%
FTES/FTEF ⁷	11.0		11.0	19.0		19.0	17.0		17.0	18.2		18.2	20.7		20.7	17.5	24.1	17.9



Outcomes

	2008-09			2009-10			2010-11			2011-12			2012-13			2012-13		
	F-t-F ³	DE	Total	F-t-F ³	DE	Total	F-t-F ³	DE	Total	F-t-F ³	DE	Total	Subject			Collegewide		
	F-t-F ³	DE	Total	F-t-F ³	DE	Total	F-t-F ³	DE	Total	F-t-F ³	DE	Total	F-t-F ³	DE	Total	F-t-F ³	DE	Total
Retention Rate ⁸	90.2%		90.2%	91.8%		91.8%	92.5%		92.5%	92.8%		92.8%	98.7%		98.7%	85.9%	76.0%	85.1%
Success Rate ⁸	82.9%		82.9%	86.9%		86.9%	82.1%		82.1%	81.2%		81.2%	88.0%		88.0%	69.1%	53.4%	67.9%



Soils

Degrees - Certificates

	2008-09			2009-10			2010-11			2011-12			2012-13			Collegewide		
	AA	AS	CERT	AA	AS	CERT	AA	AS	CERT	AA	AS	CERT	AA	AS	CERT	AA	AS	CERT
Awards related to or contributed to by Agriculture																		
Agriculture Business Mgmt	3	2	0	6	1	1	2	0	0	1	1	0	4	2	2			
Animal Science	2	6	1	3	4	2	2	6	1	9	3	1	1	3	5			
Plant Science	0	2	0	1	2	0	2	0	1	1	0	0	0	2	3			
Environmental Horticulture	1	0	0	0	0	0	0	1	2	0	0	1	0	1	2			
Equine Science	0	0	0	0	0	1	0	0	0	0	0	0	0	0	0			
Forestry	1	1	0	4	1	1	1	4	3	1	0	1	1	4	5			
Horticulture	0	0	0	1	0	0	0	0	0	0	0	0	0	0	0			
Veterinary Technician	0	0	4	0	0	3	0	0	16	0	0	12	0	0	12			
Total Awards by Type	7	11	5	15	8	8	7	11	23	12	4	15	6	12	29	534	260	969
% of total awards by type	30%	48%	22%	48%	26%	26%	17%	27%	56%	39%	13%	48%	13%	26%	62%	30%	15%	55%
Total Awards	23			31			41			31			47			1,763		
Liberal Studies	86	0	0	86	0	0	79	0	0	78	0	0	91	0	0			
Liberal Arts/ Science	233	0	0	164	1	0	133	1	0	85	2	0	61	0	0			

Notes¹ **Source:** ODS Reports (July, 2013)² **Student Headcount, Unduplicated:** Number of students enrolled on census day, where each student is counted one time.³ **F-t-F:** Face to Face instructional delivery mode.⁴ **Enrollment:** Every course in which students are enrolled on census day.⁵ **Students/Section:** Student enrollments per section on census day. Cross-listed sections are not combined.⁶ Acronyms **FTES** and **FTEF** represent full-time equivalent students and full-time equivalent faculty, respectively.⁷ **FTES/FTEF:** A measurement of productivity where the generally accepted target is 17.5.⁸ **Success rate numerator:** Number of course enrollments with a successful passing grade (A,B,C,P/CR).**Retention rate numerator:** Number of course enrollments retained through the semester (grade = A,B,C,P/CR,D,F,NP/NC,I).**Success and Retention rate denominator:** Number of enrollments retained (A,B,C,P/CR,D,F,NP/NC,I), withdrawn (W), and dropped after Census Day (DR).