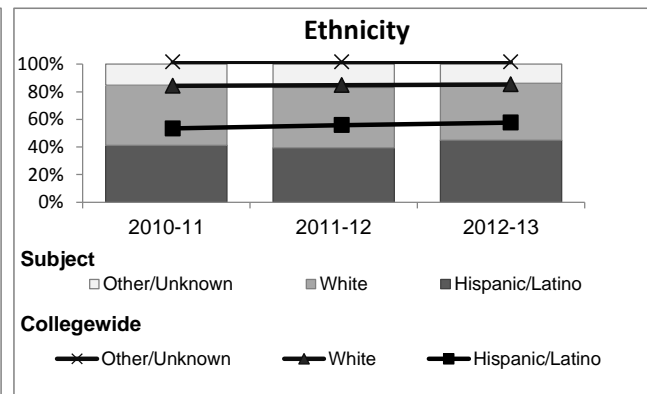
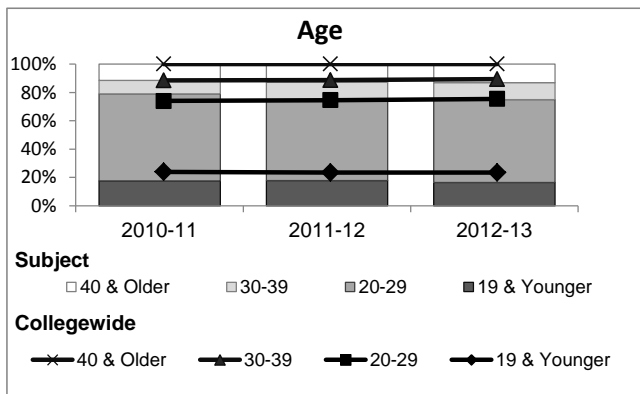
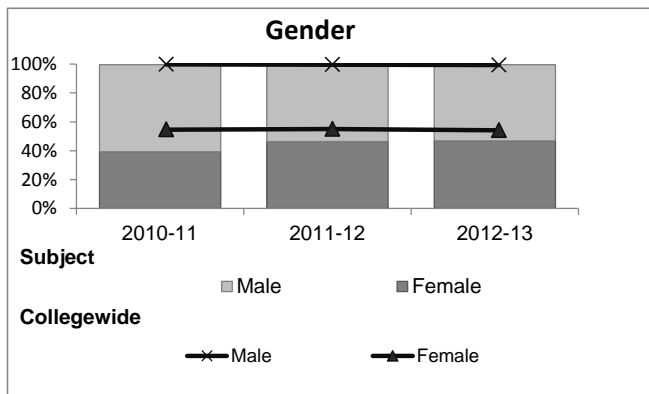


Crop Science

Student Demographic Information

Student Headcount	2008-09		2009-10		2010-11		2011-12		2012-13		2012-13	
	#	% change - Prior Yr	#	% change - Prior Yr	#	% change - Prior Yr	#	% change - Prior Yr	Subject		Collegewide	
									#	% change - Prior Yr	#	% change - Prior Yr
Unduplicated ²	195	--	221	13%	245	11%	287	17%	260	-9%	24,186	-4%

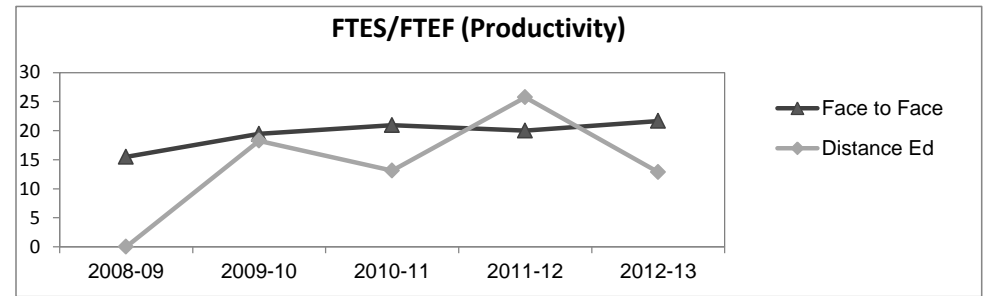
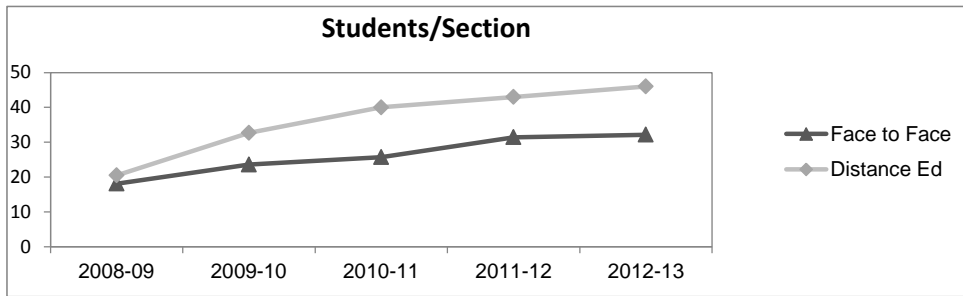
	2008-09		2009-10		2010-11		2011-12		2012-13		2012-13	
	#	%	#	%	#	%	#	%	Subject		Collegewide	
									#	%	#	%
Gender												
Female	81	42%	84	38%	96	39%	133	46%	122	47%	13,002	54%
Male	114	58%	137	62%	148	60%	153	53%	137	53%	11,007	46%
Unknown	0	0%	0	0%	1	0%	1	0%	1	0%	177	1%
Age												
19 & Younger	42	22%	56	25%	43	18%	51	18%	43	17%	5,879	24%
20-29	105	54%	117	53%	151	62%	162	56%	152	58%	12,407	51%
30-39	23	12%	25	11%	23	9%	37	13%	31	12%	3,344	14%
40 & Older	25	13%	23	10%	28	11%	37	13%	34	13%	2,555	11%
Ethnicity												
African American	13	7%	14	6%	18	7%	20	7%	14	5%	1,479	6%
American Indian	1	1%	3	1%	7	3%	4	1%	2	1%	148	1%
Asian/Filipino/Pac Islander	10	5%	9	4%	9	4%	14	5%	7	3%	1,180	5%
Hispanic/Latino	61	31%	76	34%	101	41%	113	39%	117	45%	13,518	56%
White	100	51%	106	48%	107	44%	126	44%	107	41%	6,706	28%
Two or more races	3	2%	8	4%	3	1%	10	3%	12	5%	802	3%
Unknown	7	4%	5	2%	0	0%	0	0%	1	0%	353	1%



Crop Science

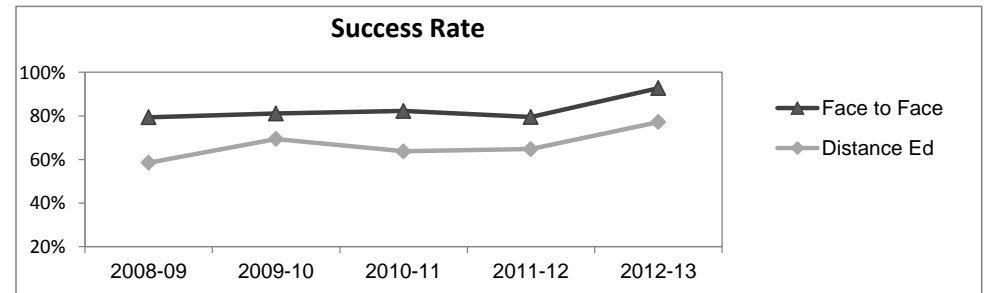
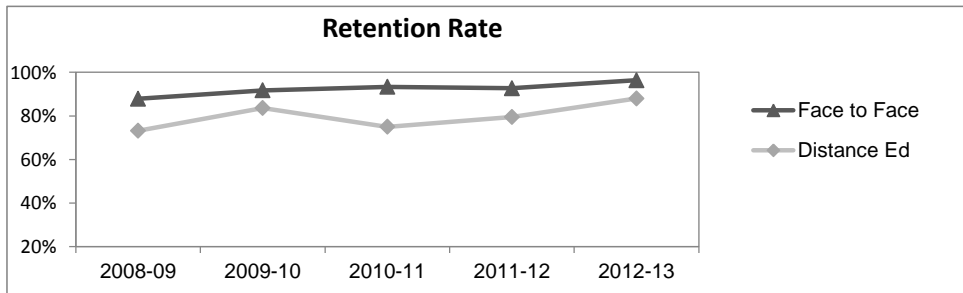
Course Enrollments - Productivity

	2008-09			2009-10			2010-11			2011-12			2012-13			2012-13		
	F-t-F ³	DE	Total	F-t-F ³	DE	Total	F-t-F ³	DE	Total	F-t-F ³	DE	Total	Subject	Subject	Subject	Collegewide	Collegewide	Collegewide
Number of Sections	10	2	12	7	3	10	7	2	9	7	2	9	6	2	8	3,285	193	3,478
Enrollment ⁴																		
Census	181	41	222	165	98	263	180	80	260	220	86	306	193	92	285	99,531	8,125	107,656
Students/Section ⁵	18	21	19	24	33	26	26	40	29	31	43	34	32	46	36	30	42	31
Productivity																		
FTES ⁶	35.0	3.8	38.9	35.0	18.2	53.2	37.7	7.9	45.6	43.3	15.4	58.8	40.4	8.6	49.0	11,680.8	901.0	12,581.8
FTEF ⁶	2.3	0.0	2.3	1.8	1.0	2.8	1.8	0.6	2.4	2.2	0.6	2.8	1.9	0.7	2.5	667.0	37.4	704.4
Contract			41%			36%			50%			54%			50%			61%
Overload			26%			31%			11%			12%			12%			9%
Adjunct			15%			12%			14%			12%			13%			22%
Summer			18%			21%			25%			22%			25%			7%
FTES/FTEF ⁷	15.5	0.0	17.2	19.4	18.3	19.0	20.9	13.1	19.0	20.0	25.7	21.2	21.7	12.8	19.3	17.5	24.1	17.9



Outcomes

	2008-09			2009-10			2010-11			2011-12			2012-13			2012-13		
	F-t-F ³	DE	Total	F-t-F ³	DE	Total	F-t-F ³	DE	Total	F-t-F ³	DE	Total	Subject	Subject	Subject	Collegewide	Collegewide	Collegewide
Retention Rate ⁸	87.8%	73.2%	85.2%	91.7%	83.7%	88.8%	93.3%	75.0%	87.7%	92.7%	79.5%	89.0%	96.4%	88.0%	93.7%	85.9%	76.0%	85.1%
Success Rate ⁸	79.4%	58.5%	75.7%	81.1%	69.4%	76.8%	82.2%	63.8%	76.5%	79.5%	64.8%	75.3%	92.7%	77.2%	87.7%	69.1%	53.4%	67.9%



Crop Science

Degrees - Certificates

	2008-09			2009-10			2010-11			2011-12			2012-13			Collegewide		
	AA	AS	CERT	AA	AS	CERT	AA	AS	CERT	AA	AS	CERT	AA	AS	CERT	AA	AS	CERT
Awards related to or contributed to by Agriculture																		
Agriculture Business Mgmt	3	2	0	6	1	1	2	0	0	1	1	0	4	2	2			
Animal Science	2	6	1	3	4	2	2	6	1	9	3	1	1	3	5			
Plant Science	0	2	0	1	2	0	2	0	1	1	0	0	0	2	3			
Environmental Horticulture	1	0	0	0	0	0	0	1	2	0	0	1	0	1	2			
Equine Science	0	0	0	0	0	1	0	0	0	0	0	0	0	0	0			
Forestry	1	1	0	4	1	1	1	4	3	1	0	1	1	4	5			
Horticulture	0	0	0	1	0	0	0	0	0	0	0	0	0	0	0			
Veterinary Technician	0	0	4	0	0	3	0	0	16	0	0	12	0	0	12			
Total Awards by Type	7	11	5	15	8	8	7	11	23	12	4	15	6	12	29	534	260	969
% of total awards by type	30%	48%	22%	48%	26%	26%	17%	27%	56%	39%	13%	48%	13%	26%	62%	30%	15%	55%
Total Awards	23			31			41			31			47			1,763		
Liberal Studies	86	0	0	86	0	0	79	0	0	78	0	0	91	0	0			
Liberal Arts/ Science	233	0	0	164	1	0	133	1	0	85	2	0	61	0	0			

Notes¹ **Source:** ODS Reports (July, 2013)² **Student Headcount, Unduplicated:** Number of students enrolled on census day, where each student is counted one time.³ **F-t-F:** Face to Face instructional delivery mode.⁴ **Enrollment:** Every course in which students are enrolled on census day.⁵ **Students/Section:** Student enrollments per section on census day. Cross-listed sections are not combined.⁶ Acronyms **FTES** and **FTEF** represent full-time equivalent students and full-time equivalent faculty, respectively.⁷ **FTES/FTEF:** A measurement of productivity where the generally accepted target is 17.5.⁸ **Success rate numerator:** Number of course enrollments with a successful passing grade (A,B,C,P/CR).**Retention rate numerator:** Number of course enrollments retained through the semester (grade = A,B,C,P/CR,D,F,NP/NC,I).**Success and Retention rate denominator:** Number of enrollments retained (A,B,C,P/CR,D,F,NP/NC,I), withdrawn (W), and dropped after Census Day (DR).