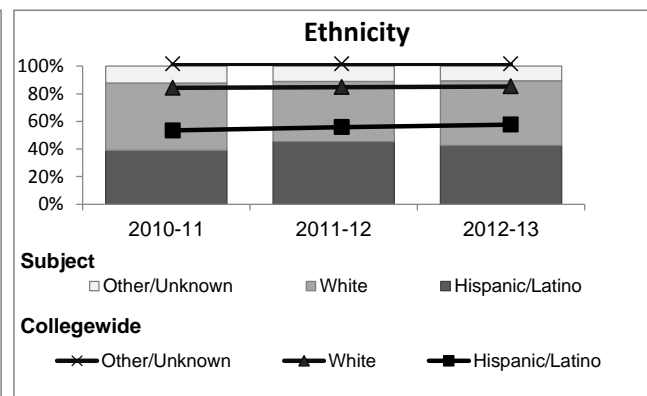
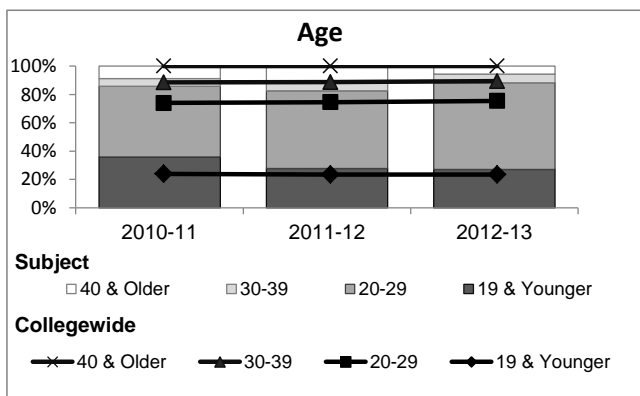
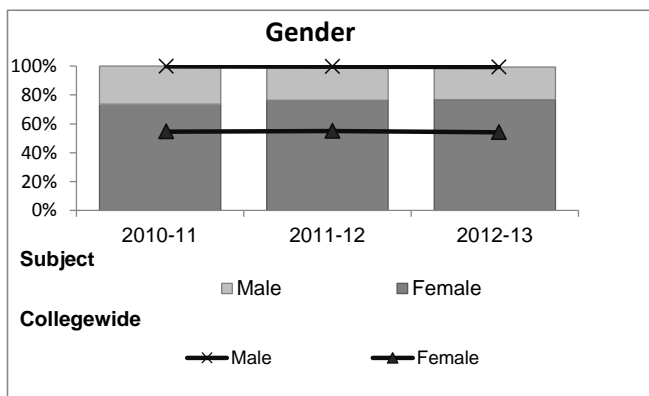


Animal Science

Student Demographic Information

Student Headcount	2008-09		2009-10		2010-11		2011-12		2012-13			
	#	% change - Prior Yr	#	% change - Prior Yr	#	% change - Prior Yr	#	% change - Prior Yr	Subject		Collegewide	
									#	% change - Prior Yr	#	% change - Prior Yr
Unduplicated ²	350	--	292	-17%	312	7%	342	10%	324	-5%	24,186	-4%

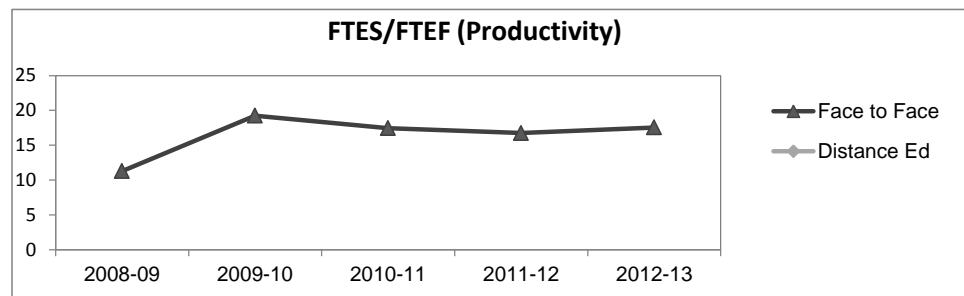
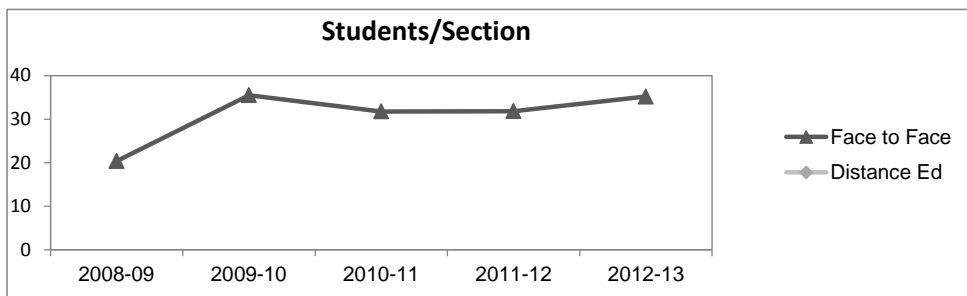
	2008-09		2009-10		2010-11		2011-12		2012-13			
	#	%	#	%	#	%	#	%	Subject		Collegewide	
									#	%	#	%
Gender												
Female	263	75%	214	73%	230	74%	261	76%	249	77%	13,002	54%
Male	85	24%	78	27%	82	26%	78	23%	73	23%	11,007	46%
Unknown	2	1%	0	0%	0	0%	3	1%	2	1%	177	1%
Age												
19 & Younger	133	38%	113	39%	112	36%	95	28%	88	27%	5,879	24%
20-29	144	41%	144	49%	156	50%	188	55%	198	61%	12,407	51%
30-39	27	8%	14	5%	17	5%	22	6%	20	6%	3,344	14%
40 & Older	46	13%	21	7%	27	9%	37	11%	18	6%	2,555	11%
Ethnicity												
African American	13	4%	18	6%	15	5%	16	5%	17	5%	1,479	6%
American Indian	9	3%	7	2%	4	1%	5	1%	1	0%	148	1%
Asian/Filipino/Pac Islander	6	2%	3	1%	7	2%	3	1%	3	1%	1,180	5%
Hispanic/Latino	112	32%	99	34%	122	39%	155	45%	138	43%	13,518	56%
White	196	56%	155	53%	152	49%	149	44%	152	47%	6,706	28%
Two or more races	8	2%	6	2%	12	4%	13	4%	13	4%	802	3%
Unknown	6	2%	4	1%	0	0%	1	0%	0	0%	353	1%



Animal Science

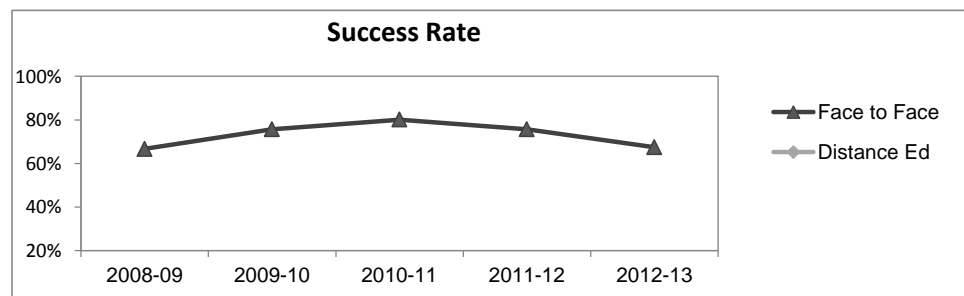
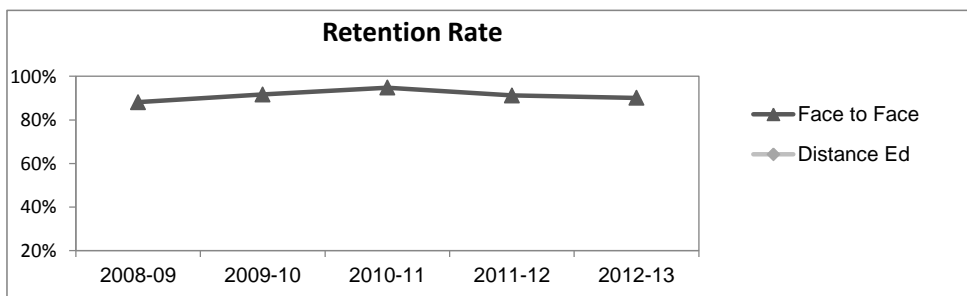
Course Enrollments - Productivity

	2008-09			2009-10			2010-11			2011-12			2012-13			2012-13		
	F-t-F ³	DE	Total	F-t-F ³	DE	Total	F-t-F ³	DE	Total	F-t-F ³	DE	Total	Subject	Subject	Subject	Collegewide	Collegewide	Collegewide
Number of Sections	31	0	31	16	0	16	21	0	21	22	0	22	19	0	19	3,285	193	3,478
Enrollment ⁴																		
Census	630	0	630	568	0	568	667	0	667	700	0	700	668	0	668	99,531	8,125	107,656
Students/Section ⁵	20		20	36		36	32		32	32		32	35		35	30	42	31
Productivity																		
FTES ⁶	77.3	0	77.3	65.5	0	65.5	75.3	0	75.3	77.1	0	77.1	68.9	0	68.9	11,680.8	901.0	12,581.8
FTEF ⁶	6.8	0	6.8	3.4	0	3.4	4.3	0	4.3	4.6	0	4.6	3.9	0	3.9	667.0	37.4	704.4
Contract			28%			77%			72%			64%			41%			61%
Overload			9%			0%			0%			13%			24%			9%
Adjunct			53%			23%			28%			23%			36%			22%
Summer			10%			0%			0%			0%			0%			7%
FTES/FTEF ⁷	11.3		11.3	19.2		19.2	17.5		17.5	16.7		16.7	17.5		17.5	17.5	24.1	17.9



Outcomes

	2008-09			2009-10			2010-11			2011-12			2012-13			2012-13		
	F-t-F ³	DE	Total	F-t-F ³	DE	Total	F-t-F ³	DE	Total	F-t-F ³	DE	Total	Subject	Subject	Subject	Collegewide	Collegewide	Collegewide
Retention Rate ⁸	88.2%		88.2%	91.7%		91.7%	94.8%		94.8%	91.2%		91.2%	90.1%		90.1%	85.9%	76.0%	85.1%
Success Rate ⁸	66.7%		66.7%	75.7%		75.7%	80.1%		80.1%	75.7%		75.7%	67.5%		67.5%	69.1%	53.4%	67.9%



Animal Science

Degrees - Certificates

	2008-09			2009-10			2010-11			2011-12			2012-13			Collegewide		
	AA	AS	CERT	AA	AS	CERT	AA	AS	CERT	AA	AS	CERT	AA	AS	CERT	AA	AS	CERT
Awards related to or contributed to by Agriculture																		
Agriculture Business Mgmt	3	2	0	6	1	1	2	0	0	1	1	0	4	2	2			
Animal Science	2	6	1	3	4	2	2	6	1	9	3	1	1	3	5			
Plant Science	0	2	0	1	2	0	2	0	1	1	0	0	0	2	3			
Environmental Horticulture	1	0	0	0	0	0	0	1	2	0	0	1	0	1	2			
Equine Science	0	0	0	0	0	1	0	0	0	0	0	0	0	0	0			
Forestry	1	1	0	4	1	1	1	4	3	1	0	1	1	4	5			
Horticulture	0	0	0	1	0	0	0	0	0	0	0	0	0	0	0			
Veterinary Technician	0	0	4	0	0	3	0	0	16	0	0	12	0	0	12			
Total Awards by Type	7	11	5	15	8	8	7	11	23	12	4	15	6	12	29	534	260	969
% of total awards by type	30%	48%	22%	48%	26%	26%	17%	27%	56%	39%	13%	48%	13%	26%	62%	30%	15%	55%
Total Awards	23			31			41			31			47			1,763		
Liberal Studies	86	0	0	86	0	0	79	0	0	78	0	0	91	0	0			
Liberal Arts/ Science	233	0	0	164	1	0	133	1	0	85	2	0	61	0	0			

Notes¹ **Source:** ODS Reports (July, 2013)² **Student Headcount, Unduplicated:** Number of students enrolled on census day, where each student is counted one time.³ **F-t-F:** Face to Face instructional delivery mode.⁴ **Enrollment:** Every course in which students are enrolled on census day.⁵ **Students/Section:** Student enrollments per section on census day. Cross-listed sections are not combined.⁶ Acronyms **FTES** and **FTEF** represent full-time equivalent students and full-time equivalent faculty, respectively.⁷ **FTES/FTEF:** A measurement of productivity where the generally accepted target is 17.5.⁸ **Success rate numerator:** Number of course enrollments with a successful passing grade (A,B,C,P/CR).**Retention rate numerator:** Number of course enrollments retained through the semester (grade = A,B,C,P/CR,D,F,NP/NC,I).**Success and Retention rate denominator:** Number of enrollments retained (A,B,C,P/CR,D,F,NP/NC,I), withdrawn (W), and dropped after Census Day (DR).