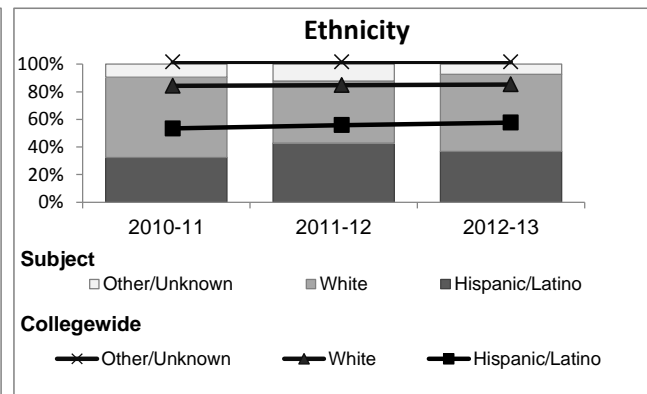
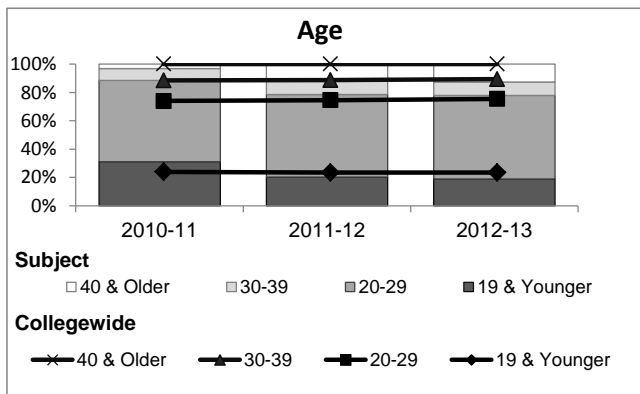
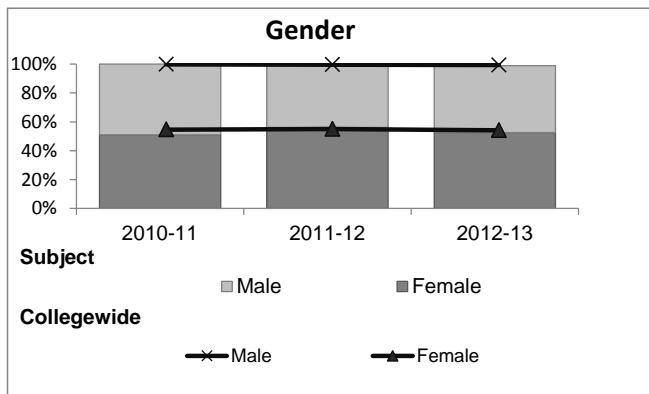


Agricultural Business

Student Demographic Information

Student Headcount	2008-09		2009-10		2010-11		2011-12		2012-13		2012-13	
	#	% change - Prior Yr	#	% change - Prior Yr	#	% change - Prior Yr	#	% change - Prior Yr	Subject		Collegewide	
									#	% change - Prior Yr	#	% change - Prior Yr
Unduplicated ²	80	--	91	14%	96	5%	98	2%	95	-3%	24,186	-4%

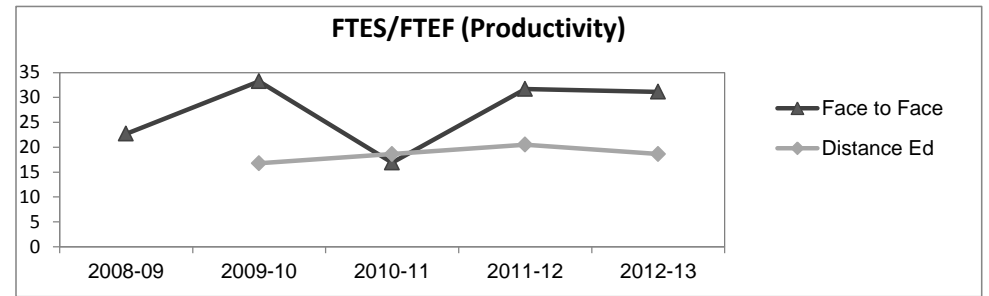
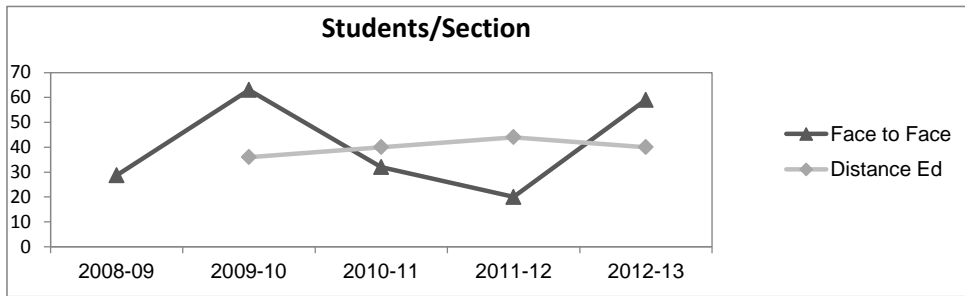
	2008-09		2009-10		2010-11		2011-12		2012-13		2012-13	
	#	%	#	%	#	%	#	%	Subject		Collegewide	
									#	%	#	%
Gender												
Female	27	34%	45	49%	49	51%	55	56%	50	53%	13,002	54%
Male	53	66%	46	51%	47	49%	43	44%	44	46%	11,007	46%
Unknown	0	0%	0	0%	0	0%	0	0%	1	1%	177	1%
Age												
19 & Younger	25	31%	24	26%	30	31%	20	20%	18	19%	5,879	24%
20-29	46	58%	49	54%	55	57%	57	58%	56	59%	12,407	51%
30-39	4	5%	8	9%	8	8%	10	10%	9	9%	3,344	14%
40 & Older	5	6%	10	11%	3	3%	11	11%	12	13%	2,555	11%
Ethnicity												
African American	7	9%	5	5%	3	3%	7	7%	2	2%	1,479	6%
American Indian	2	3%	1	1%	0	0%	1	1%	3	3%	148	1%
Asian/Filipino/Pac Islander	3	4%	2	2%	3	3%	3	3%	1	1%	1,180	5%
Hispanic/Latino	16	20%	21	23%	31	32%	42	43%	35	37%	13,518	56%
White	50	63%	57	63%	56	58%	44	45%	53	56%	6,706	28%
Two or more races	0	0%	4	4%	2	2%	1	1%	1	1%	802	3%
Unknown	2	3%	1	1%	1	1%	0	0%	0	0%	353	1%



Agricultural Business

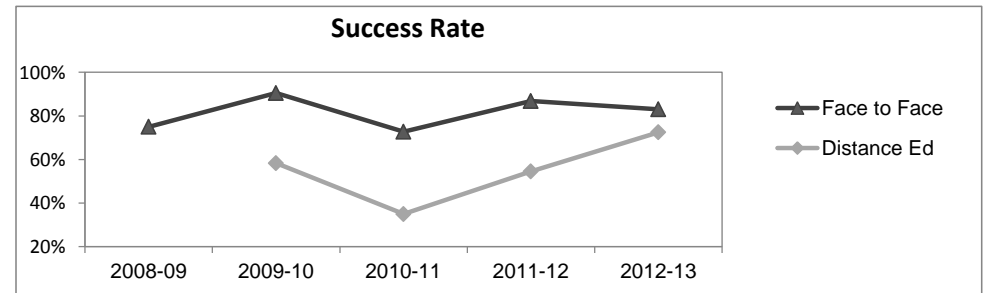
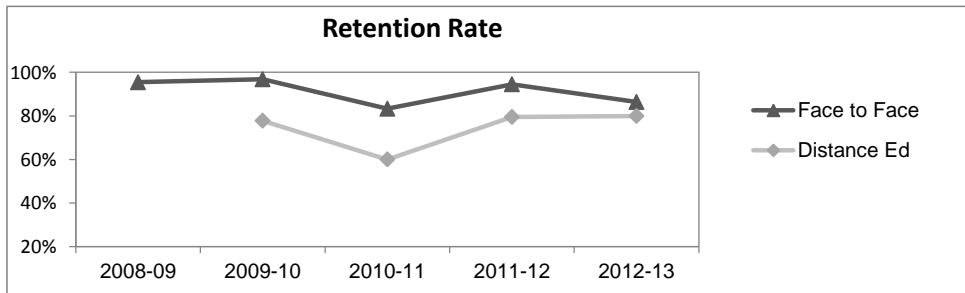
Course Enrollments - Productivity

	2008-09			2009-10			2010-11			2011-12			2012-13			2012-13		
	F-t-F ³	DE	Total	F-t-F ³	DE	Total	F-t-F ³	DE	Total	F-t-F ³	DE	Total	Subject	DE	Total	Collegewide	DE	Total
Number of Sections	3	0	3	1	1	2	2	1	3	3	1	4	1	1	2	3,285	193	3,478
Enrollment ⁴																		
Census	86	0	86	63	36	99	64	40	104	60	44	104	59	40	99	99,531	8,125	107,656
Students/Section ⁵	29		29	63	36	50	32	40	35	20	44	26	59	40	50	30	42	31
Productivity																		
FTES ⁶	9.1	0	9.1	6.7	3.4	10.0	6.8	3.7	10.5	6.3	4.1	10.4	6.2	3.7	10.0	11,680.8	901.0	12,581.8
FTEF ⁶	0.4	0	0.4	0.2	0.2	0.4	0.4	0.2	0.6	0.2	0.2	0.4	0.2	0.2	0.4	667.0	37.4	704.4
Contract			100%			100%			67%			0%			0%			61%
Overload			0%			0%			0%			50%			50%			9%
Adjunct			0%			0%			33%			50%			50%			22%
Summer			0%			0%			0%			0%			0%			7%
FTES/FTEF ⁷	22.7		22.7	33.3	16.8	25.0	16.9	18.6	17.5	31.7	20.5	26.1	31.1	18.6	24.9	17.5	24.1	17.9



Outcomes

	2008-09			2009-10			2010-11			2011-12			2012-13			2012-13		
	F-t-F ³	DE	Total	F-t-F ³	DE	Total	F-t-F ³	DE	Total	F-t-F ³	DE	Total	Subject	DE	Total	Collegewide	DE	Total
Retention Rate ⁸	95.5%		95.5%	96.8%	77.8%	89.9%	83.3%	60.0%	74.5%	94.5%	79.5%	89.6%	86.4%	80.0%	83.8%	85.9%	76.0%	85.1%
Success Rate ⁸	75.0%		75.0%	90.5%	58.3%	78.8%	72.7%	35.0%	58.5%	86.8%	54.5%	76.3%	83.1%	72.5%	78.8%	69.1%	53.4%	67.9%



Agricultural Business

Degrees - Certificates

	2008-09			2009-10			2010-11			2011-12			2012-13			Collegewide		
	AA	AS	CERT	AA	AS	CERT	AA	AS	CERT	AA	AS	CERT	AA	AS	CERT	AA	AS	CERT
Awards related to or contributed to by Agriculture																		
Agriculture Business Mgmt	3	2	0	6	1	1	2	0	0	1	1	0	4	2	2			
Animal Science	2	6	1	3	4	2	2	6	1	9	3	1	1	3	5			
Plant Science	0	2	0	1	2	0	2	0	1	1	0	0	0	2	3			
Environmental Horticulture	1	0	0	0	0	0	0	1	2	0	0	1	0	1	2			
Equine Science	0	0	0	0	0	1	0	0	0	0	0	0	0	0	0			
Forestry	1	1	0	4	1	1	1	4	3	1	0	1	1	4	5			
Horticulture	0	0	0	1	0	0	0	0	0	0	0	0	0	0	0			
Veterinary Technician	0	0	4	0	0	3	0	0	16	0	0	12	0	0	12			
Total Awards by Type	7	11	5	15	8	8	7	11	23	12	4	15	6	12	29	534	260	969
% of total awards by type	30%	48%	22%	48%	26%	26%	17%	27%	56%	39%	13%	48%	13%	26%	62%	30%	15%	55%
Total Awards	23			31			41			31			47			1,763		
Liberal Studies	86	0	0	86	0	0	79	0	0	78	0	0	91	0	0			
Liberal Arts/ Science	233	0	0	164	1	0	133	1	0	85	2	0	61	0	0			

Notes¹ **Source:** ODS Reports (July, 2013)² **Student Headcount, Unduplicated:** Number of students enrolled on census day, where each student is counted one time.³ **F-t-F:** Face to Face instructional delivery mode.⁴ **Enrollment:** Every course in which students are enrolled on census day.⁵ **Students/Section:** Student enrollments per section on census day. Cross-listed sections are not combined.⁶ Acronyms **FTES** and **FTEF** represent full-time equivalent students and full-time equivalent faculty, respectively.⁷ **FTES/FTEF:** A measurement of productivity where the generally accepted target is 17.5.⁸ **Success rate numerator:** Number of course enrollments with a successful passing grade (A,B,C,P/CR).**Retention rate numerator:** Number of course enrollments retained through the semester (grade = A,B,C,P/CR,D,F,NP/NC,I).**Success and Retention rate denominator:** Number of enrollments retained (A,B,C,P/CR,D,F,NP/NC,I), withdrawn (W), and dropped after Census Day (DR).