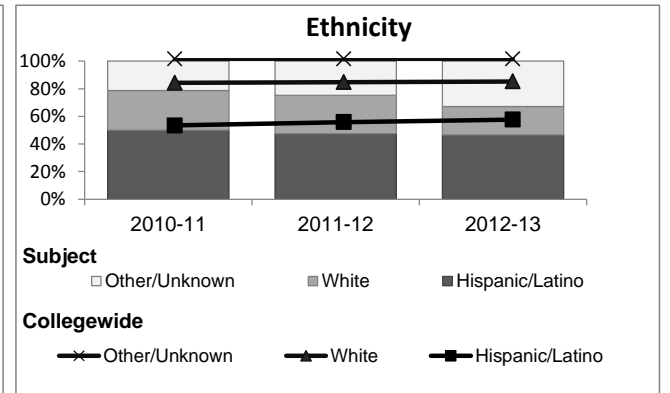
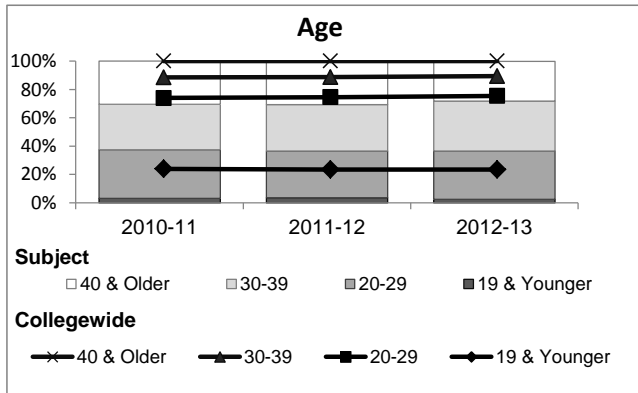
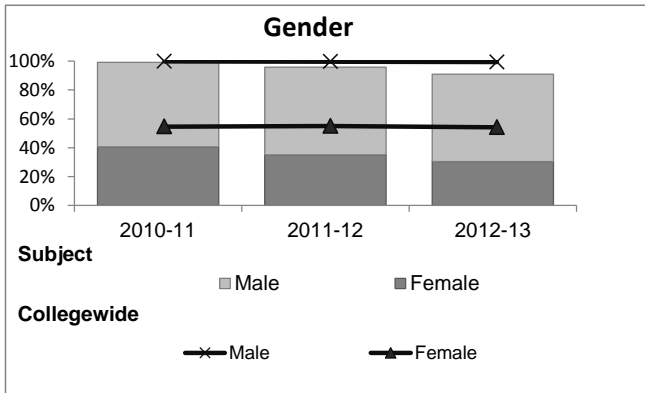


Correctional Administration

Student Demographic Information

Student Headcount	2008-09		2009-10		2010-11		2011-12		2012-13		2012-13	
	Subject		Collegewide		Subject		Collegewide		Subject		Collegewide	
	#	% change - Prior Yr	#	% change - Prior Yr	#	% change - Prior Yr	#	% change - Prior Yr	#	% change - Prior Yr	#	% change - Prior Yr
Unduplicated ²	1,322	--	1,573	19%	1,385	-12%	937	-32%	884	-6%	24,186	-4%

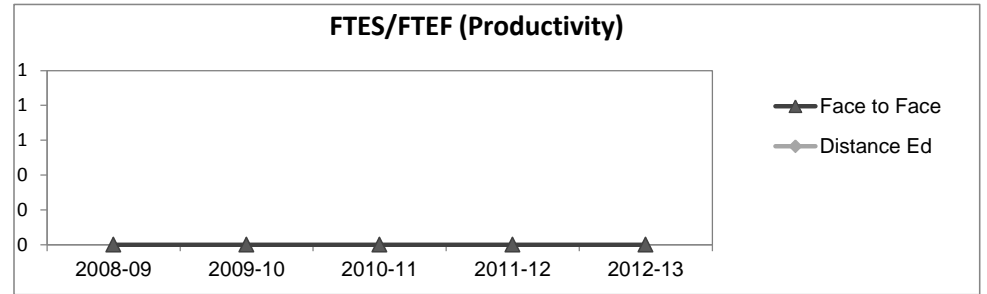
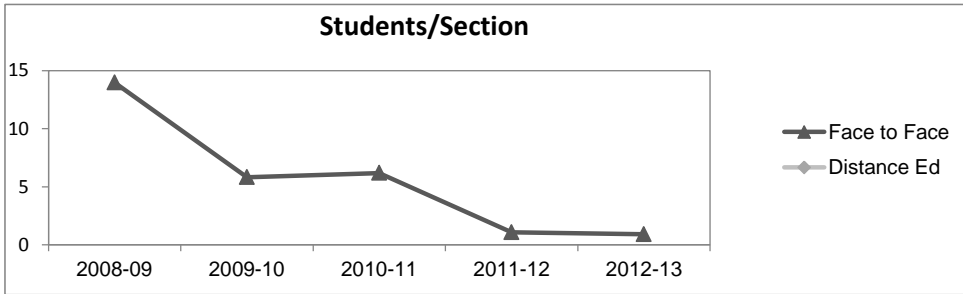
	2008-09		2009-10		2010-11		2011-12		2012-13		2012-13	
	Subject		Collegewide		Subject		Collegewide		Subject		Collegewide	
	#	%	#	%	#	%	#	%	#	%	#	%
Gender												
Female	495	37%	570	36%	561	41%	328	35%	268	30%	13,002	54%
Male	802	61%	985	63%	813	59%	570	61%	536	61%	11,007	46%
Unknown	25	2%	18	1%	11	1%	39	4%	80	9%	177	1%
Age												
19 & Younger	59	4%	49	3%	44	3%	33	4%	22	2%	5,879	24%
20-29	614	46%	594	38%	475	34%	309	33%	301	34%	12,407	51%
30-39	347	26%	479	30%	445	32%	308	33%	312	35%	3,344	14%
40 & Older	302	23%	451	29%	421	30%	287	31%	248	28%	2,555	11%
Ethnicity												
African American	111	8%	145	9%	122	9%	69	7%	64	7%	1,479	6%
American Indian	10	1%	15	1%	16	1%	5	1%	7	1%	148	1%
Asian/Filipino/Pac Islander	56	4%	46	3%	51	4%	46	5%	45	5%	1,180	5%
Hispanic/Latino	669	51%	756	48%	693	50%	444	47%	411	46%	13,518	56%
White	404	31%	490	31%	398	29%	261	28%	183	21%	6,706	28%
Two or more races	3	0%	5	0%	7	1%	3	0%	2	0%	802	3%
Unknown	69	5%	116	7%	98	7%	109	12%	172	19%	353	1%



Correctional Administration

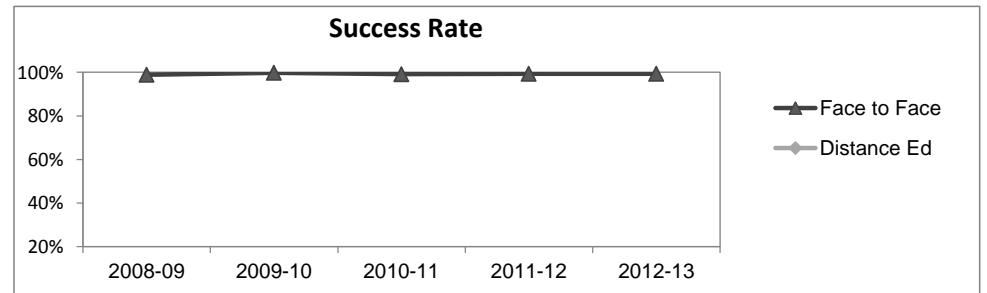
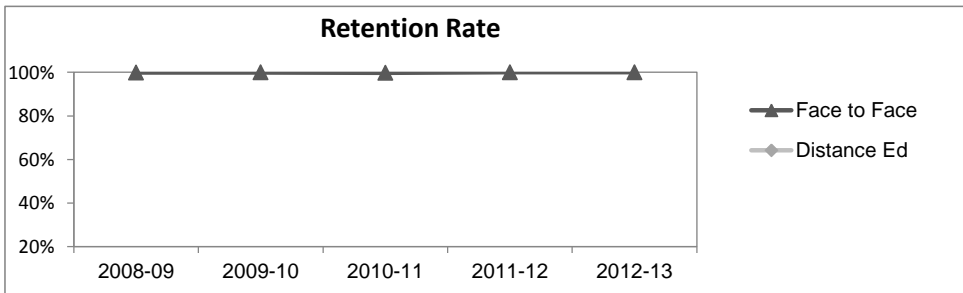
Course Enrollments - Productivity

	2008-09			2009-10			2010-11			2011-12			2012-13			2012-13		
	F-t-F ³	DE	Total	F-t-F ³	DE	Total	F-t-F ³	DE	Total	F-t-F ³	DE	Total	Subject			Collegewide		
	F-t-F ³	DE	Total	F-t-F ³	DE	Total	F-t-F ³	DE	Total	F-t-F ³	DE	Total	F-t-F ³	DE	Total	F-t-F ³	DE	Total
Number of Sections	147	0	147	223	0	223	153	0	153	140	0	140	184	0	184	3,285	193	3,478
Enrollment ⁴																		
Census	2,055	0	2,055	1,299	0	1,299	946	0	946	152	0	152	168	0	168	99,531	8,125	107,656
Students/Section ⁵	14		14	6		6	6		6	1		1	1		1	30	42	31
Productivity																		
FTES ⁶	181.0	0	181.0	145.5	0	145.5	124.2	0	124.2	84.0	0	84.0	85.2	0	85.2	11,680.8	901.0	12,581.8
FTEF ⁶	0.0	0	0.0	0.0	0	0.0	0.0	0	0.0	0.0	0	0.0	0.0	0	0.0	667.0	37.4	704.4
Contract																		61%
Overload																		9%
Adjunct																		22%
Summer																		7%
FTES/FTEF ⁷	0.0			0.0			0.0			0.0			0.0			17.5	24.1	17.9



Outcomes

	2008-09			2009-10			2010-11			2011-12			2012-13			2012-13		
	F-t-F ³	DE	Total	F-t-F ³	DE	Total	F-t-F ³	DE	Total	F-t-F ³	DE	Total	Subject			Collegewide		
	F-t-F ³	DE	Total	F-t-F ³	DE	Total	F-t-F ³	DE	Total	F-t-F ³	DE	Total	F-t-F ³	DE	Total	F-t-F ³	DE	Total
Retention Rate ⁸	99.9%		99.9%	100.0%		100.0%	99.8%		99.8%	100.0%		100.0%	100.0%		100.0%	85.9%	76.0%	85.1%
Success Rate ⁸	98.8%		98.8%	99.8%		99.8%	99.1%		99.1%	99.3%		99.3%	99.3%		99.3%	69.1%	53.4%	67.9%



Correctional Administration

Degrees - Certificates

	2008-09			2009-10			2010-11			2011-12			2012-13			2012-13		
	AA	AS	CERT	AA	AS	CERT	AA	AS	CERT	AA	AS	CERT	Subject			Collegewide		
	AA	AS	CERT	AA	AS	CERT	AA	AS	CERT	AA	AS	CERT	AA	AS	CERT	AA	AS	CERT
Awards related to or contributed to by Administration of Justice & Correction																		
Administration of Justice	5	0	0	0	0	0	0	0	0	0	0	0	0	0	0			
Correctional Administration	6	0	0	2	0	0	2	0	0	4	0	0	2	0	0			
Total Awards by Type	11	0	0	2	0	0	2	0	0	4	0	0	2	0	0	534	260	969
% of total awards by type	100%	0%	0%	100%	0%	0%	100%	0%	0%	100%	0%	0%	100%	0%	0%	30%	15%	55%
Total Awards	11			2			2			4			2			1,763		

Notes¹ **Source:** ODS Reports (July, 2013)² **Student Headcount, *Unduplicated*:** Number of students enrolled on census day, where each student is counted one time.³ **F-t-F:** Face to Face instructional delivery mode.⁴ **Enrollment:** Every course in which students are enrolled on census day.⁵ **Students/Section:** Student enrollments per section on census day. Cross-listed sections are not combined.⁶ Acronyms **FTES** and **FTEF** represent full-time equivalent students and full-time equivalent faculty, respectively.⁷ **FTES/FTEF:** A measurement of productivity where the generally accepted target is 17.5.⁸ **Success rate numerator:** Number of course enrollments with a successful passing grade (A,B,C,P/CR).**Retention rate numerator:** Number of course enrollments retained through the semester (grade = A,B,C,P/CR,D,F,NP/NC,I).**Success and Retention rate denominator:** Number of enrollments retained (A,B,C,P/CR,D,F,NP/NC,I), withdrawn (W), and dropped after Census Day (DR).