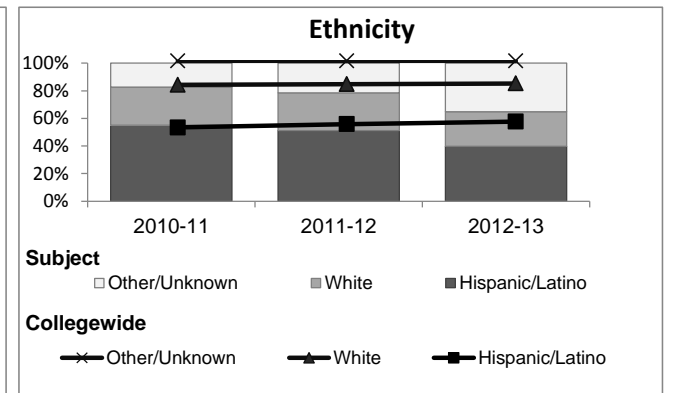
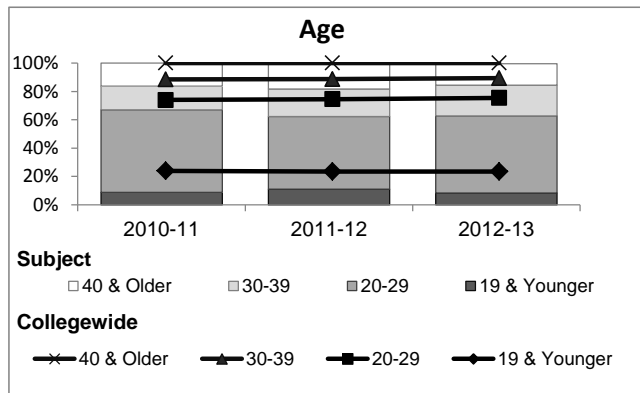
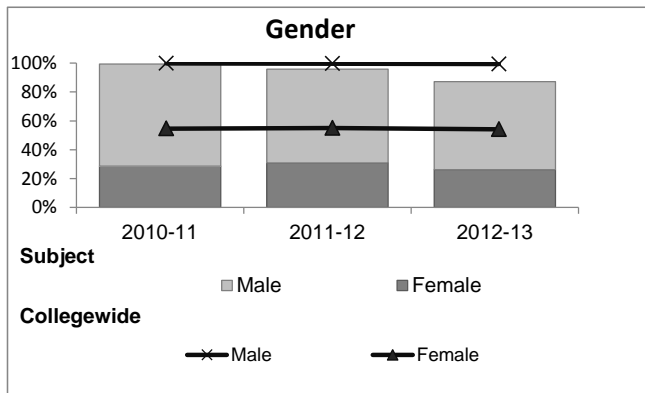


Administration of Justice

Student Demographic Information

Student Headcount	2008-09		2009-10		2010-11		2011-12		2012-13		2012-13	
	#	% change - Prior Yr	#	% change - Prior Yr	#	% change - Prior Yr	#	% change - Prior Yr	Subject		Collegewide	
									#	% change - Prior Yr	#	% change - Prior Yr
Unduplicated ²	877	--	483	-45%	419	-13%	364	-13%	398	9%	24,186	-4%

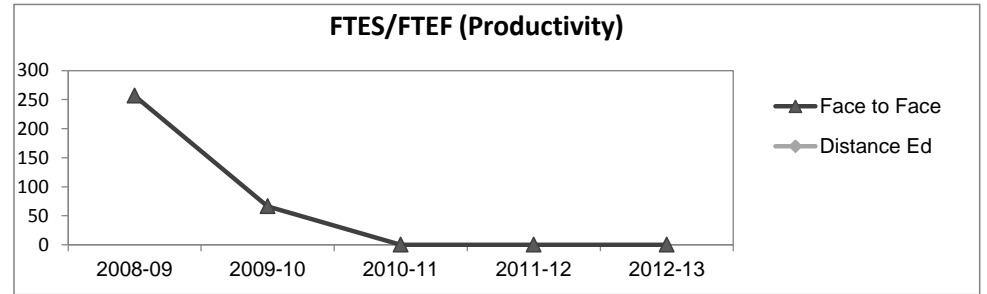
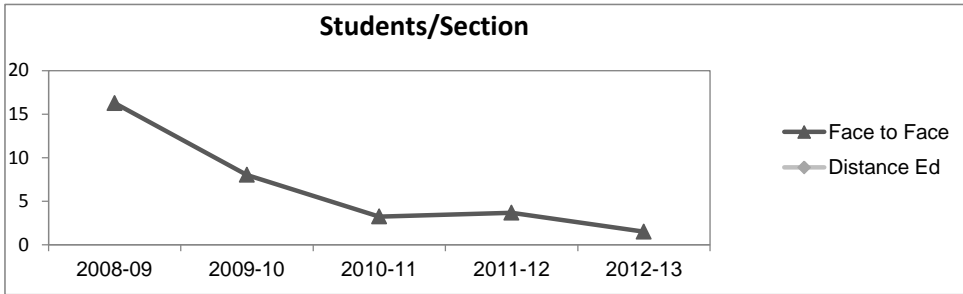
	2008-09		2009-10		2010-11		2011-12		2012-13		2012-13	
	#	%	#	%	#	%	#	%	Subject		Collegewide	
									#	%	#	%
Gender												
Female	308	35%	129	27%	120	29%	112	31%	104	26%	13,002	54%
Male	550	63%	345	71%	296	71%	237	65%	243	61%	11,007	46%
Unknown	19	2%	9	2%	3	1%	15	4%	51	13%	177	1%
Age												
19 & Younger	64	7%	47	10%	37	9%	40	11%	33	8%	5,879	24%
20-29	498	57%	272	56%	244	58%	187	51%	217	55%	12,407	51%
30-39	188	21%	88	18%	70	17%	71	20%	86	22%	3,344	14%
40 & Older	127	14%	76	16%	68	16%	66	18%	61	15%	2,555	11%
Ethnicity												
African American	106	12%	65	13%	31	7%	26	7%	30	8%	1,479	6%
American Indian	7	1%	7	1%	4	1%	2	1%	4	1%	148	1%
Asian/Filipino/Pac Islander	28	3%	12	2%	14	3%	10	3%	12	3%	1,180	5%
Hispanic/Latino	451	51%	247	51%	231	55%	186	51%	158	40%	13,518	56%
White	239	27%	129	27%	116	28%	100	27%	100	25%	6,706	28%
Two or more races	2	0%	4	1%	4	1%	6	2%	6	2%	802	3%
Unknown	44	5%	19	4%	19	5%	34	9%	88	22%	353	1%



Administration of Justice

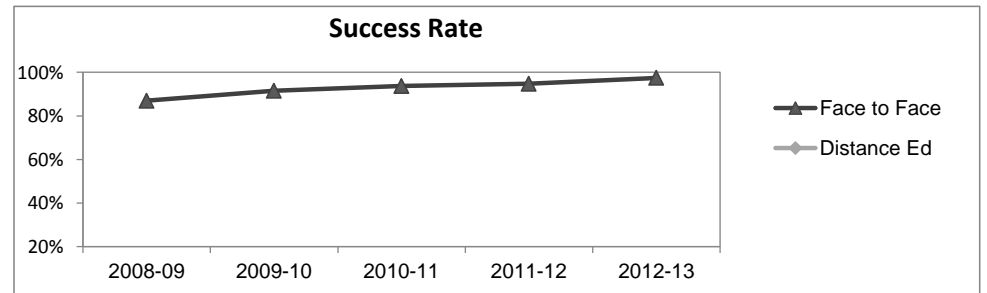
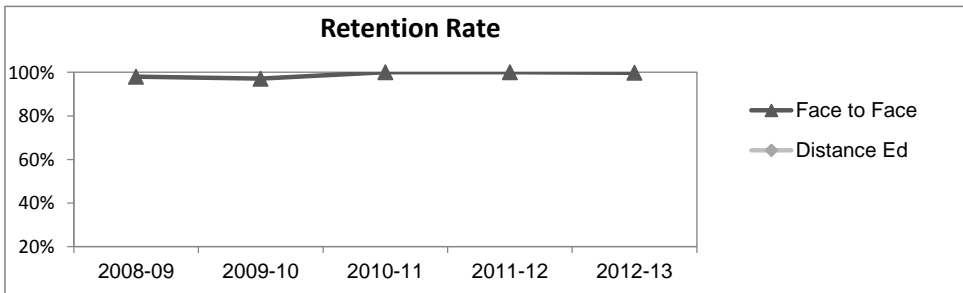
Course Enrollments - Productivity

	2008-09			2009-10			2010-11			2011-12			2012-13			2012-13		
	F-t-F ³	DE	Total	F-t-F ³	DE	Total	F-t-F ³	DE	Total	F-t-F ³	DE	Total	Subject			Collegewide		
	F-t-F ³	DE	Total	F-t-F ³	DE	Total	F-t-F ³	DE	Total	F-t-F ³	DE	Total	F-t-F ³	DE	Total	F-t-F ³	DE	Total
Number of Sections	62	0	62	37	0	37	34	0	34	33	0	33	38	0	38	3,285	193	3,478
Enrollment ⁴																		
Census	1,008	0	1,008	297	0	297	110	0	110	121	0	121	57	0	57	99,531	8,125	107,656
Students/Section ⁵	16		16	8		8	3		3	4		4	2		2	30	42	31
Productivity																		
FTES ⁶	70.3	0	70.3	34.4	0	34.4	21.3	0	21.3	21.3	0	21.3	24.3	0	24.3	11,680.8	901.0	12,581.8
FTEF ⁶	0.3	0	0.3	0.5	0	0.5	0.0	0	0.0	0.0	0	0.0	0.0	0	0.0	667.0	37.4	704.4
Contract			0%			0%												61%
Overload			0%			0%												9%
Adjunct			0%			100%												22%
Summer			100%			0%												7%
FTES/FTEF ⁷	256.5		256.5	66.3		66.3	0.0		0.0			0.0			0.0	17.5	24.1	17.9



Outcomes

	2008-09			2009-10			2010-11			2011-12			2012-13			2012-13		
	F-t-F ³	DE	Total	F-t-F ³	DE	Total	F-t-F ³	DE	Total	F-t-F ³	DE	Total	Subject			Collegewide		
	F-t-F ³	DE	Total	F-t-F ³	DE	Total	F-t-F ³	DE	Total	F-t-F ³	DE	Total	F-t-F ³	DE	Total	F-t-F ³	DE	Total
Retention Rate ⁸	97.9%		97.9%	97.0%		97.0%	100.0%		100.0%	100.0%		100.0%	99.8%		99.8%	85.9%	76.0%	85.1%
Success Rate ⁸	86.9%		86.9%	91.6%		91.6%	93.7%		93.7%	94.7%		94.7%	97.5%		97.5%	69.1%	53.4%	67.9%



Administration of Justice

Degrees - Certificates

	2008-09			2009-10			2010-11			2011-12			2012-13			2012-13		
	AA	AS	CERT	AA	AS	CERT	AA	AS	CERT	AA	AS	CERT	Subject			Collegewide		
	AA	AS	CERT	AA	AS	CERT	AA	AS	CERT	AA	AS	CERT	AA	AS	CERT	AA	AS	CERT
Awards related to or contributed to by Administration of Justice & Correction																		
Administration of Justice	5	0	0	0	0	0	0	0	0	0	0	0	0	0	0			
Correctional Administration	6	0	0	2	0	0	2	0	0	4	0	0	2	0	0			
Total Awards by Type	11	0	0	2	0	0	2	0	0	4	0	0	2	0	0	534	260	969
% of total awards by type	100%	0%	0%	100%	0%	0%	100%	0%	0%	100%	0%	0%	100%	0%	0%	30%	15%	55%
Total Awards	11			2			2			4			2			1,763		

Notes¹ **Source:** ODS Reports (July, 2013)² **Student Headcount, *Unduplicated*:** Number of students enrolled on census day, where each student is counted one time.³ **F-t-F:** Face to Face instructional delivery mode.⁴ **Enrollment:** Every course in which students are enrolled on census day.⁵ **Students/Section:** Student enrollments per section on census day. Cross-listed sections are not combined.⁶ Acronyms **FTES** and **FTEF** represent full-time equivalent students and full-time equivalent faculty, respectively.⁷ **FTES/FTEF:** A measurement of productivity where the generally accepted target is 17.5.⁸ **Success rate numerator:** Number of course enrollments with a successful passing grade (A,B,C,P/CR).**Retention rate numerator:** Number of course enrollments retained through the semester (grade = A,B,C,P/CR,D,F,NP/NC,I).**Success and Retention rate denominator:** Number of enrollments retained (A,B,C,P/CR,D,F,NP/NC,I), withdrawn (W), and dropped after Census Day (DR).